

# Installation Guide

Appeon PowerBuilder® 2019 R2  
FOR WINDOWS

DOCUMENT ID: ADC20231-01-1900-01

LAST REVISED: March 30, 2020

Copyright © 2019 Appeon. All rights reserved.

This publication pertains to Appeon software and to any subsequent release until otherwise indicated in new editions or technical notes. Information in this document is subject to change without notice. The software described herein is furnished under a license agreement, and it may be used or copied only in accordance with the terms of that agreement.

No part of this publication may be reproduced, transmitted, or translated in any form or by any means, electronic, mechanical, manual, optical, or otherwise, without the prior written permission of Appeon Inc.

Appeon and other Appeon products and services mentioned herein as well as their respective logos are trademarks or registered trademarks of Appeon Inc.

SAP and other SAP products and services mentioned herein as well as their respective logos are trademarks or registered trademarks of SAP and SAP affiliate company.

Java and all Java-based marks are trademarks or registered trademarks of Oracle and/or its affiliates in the U.S. and other countries.

Unicode and the Unicode Logo are registered trademarks of Unicode, Inc.

All other company and product names used herein may be trademarks or registered trademarks of their respective companies.

Use, duplication, or disclosure by the government is subject to the restrictions set forth in subparagraph (c)(1)(ii) of DFARS 52.227-7013 for the DOD and as set forth in FAR 52.227-19(a)-(d) for civilian agencies.

Appeon Inc., 1/F, Shell Industrial Building, 12 Lee Chung Street, Chai Wan District, Hong Kong.

# Contents

1	Planning Your Installation .....	1
1.1	System Requirements .....	1
1.2	Software Requirements .....	2
2	Preinstallation Tasks .....	4
3	Installation Process .....	5
3.1	Online Installation .....	5
3.1.1	Preparing your environment .....	5
3.1.2	Downloading the PowerBuilder Installer .....	5
3.1.3	Starting the PowerBuilder Installer .....	5
3.2	Offline Installation .....	6
3.2.1	Downloading the Offline Installer .....	6
3.2.2	Starting the Offline Installer .....	7
3.2.3	Selecting Products and Providing Basic Information .....	8
3.2.4	Selecting PowerBuilder components .....	9
3.2.4.1	PowerBuilder Components .....	9
3.2.5	Completing the Offline Installer .....	10
3.2.5.1	What the Installer Does .....	10
3.2.6	Installing in Silent (Unattended) Mode .....	12
3.2.6.1	Accepting the License Agreement .....	12
3.2.6.2	Specifying the SQL Anywhere Engine .....	12
3.2.6.3	Silent Install Commands .....	12
3.3	Common installation issues .....	14
3.3.1	Failed to download the PowerBuilder/InfoMaker Installer .....	14
3.3.2	PowerBuilder/InfoMaker Installer blocked by Windows Defender SmartScreen .....	17
4	Postinstallation Tasks .....	19
4.1	Upgrading Databases for jConnect for JDBC .....	19
4.2	Installing Ghostscript .....	19
4.3	Installing PostScript Drivers .....	20
5	Activating PowerBuilder .....	21
5.1	Online activation .....	21
5.2	Offline activation .....	22
6	Uninstalling PowerBuilder .....	26



# 1 Planning Your Installation

Before you install or upgrade, prepare your environment.

- Identify the components and options to install or upgrade.
- Make sure your system meets installation requirements.
- Identify software required.

In the PowerBuilder 2019 R2 Installer, you can choose to install PowerServer as well. If you decide to install PowerServer, please also carefully read the [Installation Guide for PowerServer \(PB Edition\)](#). PowerBuilder and PowerServer are described as separate products from the documentation perspective, which means, there are two sets of documents available in the PowerBuilder Installer: one for PowerBuilder (**Windows Start | Apeon | PowerBuilder 2019 R2 | PowerBuilder 2019 R2 Help**), and the other for PowerServer (**Windows Start | Apeon | PowerBuilder 2019 R2 | PowerServer (PB Edition) | Help 2019 R2**).

In the PowerBuilder 2019 R2 Installer, you can choose to install SnapDevelop (including .NET DataStore and PowerScript Migrator for SnapDevelop) as well. If you decide to install SnapDevelop, please also carefully read the SnapDevelop installation guide.

## 1.1 System Requirements

Make sure your system meets all requirements before you install PowerBuilder. See the release bulletin for the most current information about required service packs.

---

### Note

If you want to install the product using the PowerBuilder Installer (an online installation program), make sure your system also meets the requirements listed in [Preparing your environment](#).

---

**Table 1.1: System Requirements for PowerBuilder**

Product	Computer	Minimum memory	Hard disk space	Operating system
This table provides system requirements for PowerBuilder. The disk space requirements provided are approximate. The actual disk space you need for each product might vary depending on hard disk size, partitioning, and the features you choose to install. Additional temporary space is required on the hard disk during installation for uncompressing install files.				
PowerBuilder	Intel Core i3 or higher	1 GB	2 GB for all components	<b>Supported by PowerBuilder IDE and runtime:</b> Windows 7 32-bit or 64-bit with SP1 KB3033929 Windows 8.1 32-bit or 64-bit

Product	Computer	Minimum memory	Hard disk space	Operating system
				Windows 10 32-bit or 64-bit (excluding Windows IoT and Windows Embedded Compact) <b>Supported by PowerBuilder runtime only:</b> Windows Server 2012 R2 Windows Server 2016 Windows Server 2019

## 1.2 Software Requirements

Identify the software requirements for PowerBuilder.

### Note

In the PowerBuilder 2019 R2 Installer, if you also select to install PowerServer; please carefully read the software requirements for PowerServer in the [Installation Requirements](#) section in the *Installation Guide for PowerServer (PB Edition)*; and if you also select to install SnapDevelop; please carefully read the software requirements for SnapDevelop in the SnapDevelop documentation site.

**Table 1.2: Required Software for PowerBuilder features**

Feature	Required Software
The following table lists the software required for PowerBuilder features. Install any required framework packages and SDKs before you install PowerBuilder. Microsoft developer software is available from the <a href="#">Microsoft Download Center</a> . Read this table carefully to determine whether you need to install any software before you run the installer, and whether you need to install SQL Anywhere before installing PowerBuilder. If you select a feature with a prerequisite that is not yet installed, the installer displays a warning message.	
.NET Web services local host deployment	<b>Microsoft Internet Information Services (IIS) 7.5 or higher.</b> <hr/> <b>Note</b> On the development computer, IIS is not required for PowerBuilder applications or components unless the same computer is used as server for smart client applications, or for Web service components. IIS is also not required on end users' computers.

Feature	Required Software
PowerBuilder tutorials, demo databases, and sample applications	<p><b>SQL Anywhere 12 thru 17.</b></p> <p>SQL Anywhere can be downloaded from the SAP Web site. If the installer does not detect SQL Anywhere 12, 16 or 17 on your computer, it displays a warning.</p> <p>If you choose to continue, the installer does not install the tutorials or register the demo databases. To use these features later, install SQL Anywhere first, then reinstall PowerBuilder.</p>
MobiLink™ synchronization	<p><b>Adaptive Server® Anywhere 9.0.2 to SQL Anywhere 17.</b></p> <p>MobiLink is a component of Adaptive Server Anywhere and SQL Anywhere. In the SQL Anywhere setup program, select Synchronization and Messaging, and then MobiLink.</p>
EJB client development	<p><b>J2EE-compliant application server such as BEA WebLogic 8.1 and later, or IBM WebSphere 6.x.</b></p> <p><b>Oracle JDK.</b> The Oracle JDK is installed in the <i>%Apeon%\Shared\PowerBuilder\Jdk1.6.0_24</i> directory when you install PowerBuilder.</p>
.NET DLL Importer, Web service clients and Web Service DataWindow in PowerBuilder	<p><b>Microsoft .NET Framework Version 4.0 or later.</b></p>
Saving DataWindows as PDF using the Ghostscript distiller and PostScript printing	<p><b>Ghostscript and PostScript printer driver.</b></p> <p>See <a href="#">Section 4.2, “Installing Ghostscript”</a> and <a href="#">Section 4.3, “Installing PostScript Drivers”</a>.</p>
Saving DataWindows as PDF using XSL Formatting Objects (FO) and Java printing	<p><b>Oracle JDK and Apache FO processor.</b></p> <p>The Oracle JDK is installed in the <i>%Apeon%\Shared\PowerBuilder\Jdk1.6.0_24</i> directory when you install PowerBuilder.</p> <p>The Apache FO processor is installed in the <i>%Apeon%\Shared\PowerBuilder\fo-0.20.5</i> directory when you install PowerBuilder.</p>
Data access using the ADO.NET interface	<p><b>Microsoft .NET Framework Version 4.0 or later Redistributable Package.</b></p>
JDBC connectivity	<p><b>Oracle JDK.</b></p> <p>The Oracle JDK is installed in the <i>%Apeon%\Shared\PowerBuilder\Jdk1.6.0_24</i> directory when you install PowerBuilder.</p>
Runtime Packager	<p><b>Microsoft Windows Installer.</b></p> <p>Microsoft Windows Installer is installed by default on all supported Windows platforms.</p>

## 2 Preinstallation Tasks

This topic describes tasks to perform before installation.

- Log in as an administrator, as you must have administrator privileges to run the installer.
- Read the release bulletins for the latest information on the products that you are installing. Release bulletin is available on the Appeon web site at [https://docs.appeon.com/appeon\\_online\\_help/pb2019r2/release\\_bulletin\\_for\\_pb/index.html](https://docs.appeon.com/appeon_online_help/pb2019r2/release_bulletin_for_pb/index.html).
- Make sure the drive on which you install PowerBuilder is not compressed. If compression is enabled on the installation drive, the installer fails.
- Make sure you have a TEMP environment variable that points to an existing directory location with at least 300MB free space. The installer writes files to this directory during the installation and frees the space after the installation is complete.
- Close any open applications.
- Back up any files created with earlier versions of Appeon tools. Make sure that any PBLs you plan to upgrade have been regenerated without error in your current version of PowerBuilder before you back them up.

In addition to backing up your PBLs, back up any files that contain information you do not want to lose, such as database files, INI files, preference information, and modified database definition files. For more information about backing up and upgrading existing applications, see [Chapter 4, \*Postinstallation Tasks\*](#).

- Read [Section 1.2, “Software Requirements”](#) to determine whether you need to install any software before installing PowerBuilder 2019 R2.



## 3 Installation Process

### 3.1 Online Installation

Starting from 2019, a new and more efficient way to install Apeon products is introduced -- PowerBuilder Installer, which is an online installer with a self-extracting download that leads you through the installation process. The machine will be required to connect with Internet during the installation process. For those who prefer to use the offline installer, it can be downloaded from the PowerBuilder Installer (by selecting **Download Offline Installer** in the PowerBuilder Installer).

#### 3.1.1 Preparing your environment

PowerBuilder Installer relies on the following operating system and software to run:

- Windows 10, 8.1, or 7 SP1 KB3033929
- Universal C Runtime (CRT)

Universal CRT is installed by default on Windows 10, but not on Windows 7 and 8.1. UCRT must be installed before you can install Microsoft .NET Framework 4.6.1 SDK. If PowerBuilder Installer detects that UCRT is not installed, it will provide the package list according to your platform, and you must download and install the package in the order listed.

- Microsoft .NET Framework 4.6.1 SDK or later

It can be downloaded from <https://dotnet.microsoft.com/download/archives>.

#### 3.1.2 Downloading the PowerBuilder Installer

Download the PowerBuilder Installer executable from the **Downloads** page on the Apeon User Center (login is required).

#### 3.1.3 Starting the PowerBuilder Installer

The PowerBuilder Installer executable (PowerBuilderInstaller\_bootstrapper.exe) should be available in your download directory after it is downloaded.

1. Double click **PowerBuilderInstaller\_bootstrapper.exe** to start the PowerBuilder Installer (you must have administrator privileges to run the installer).
2. Select to agree to the license terms and click **Continue**.
3. Click **Install** under **PowerBuilder 2019 R2**.

For those who prefer to use the traditional offline installer, s/he can select **Download Offline Installer** and then select the products and components s/he wants to download. This will download the offline installer.

For those who want to upgrade the product, s/he can click **Update** and then select the EBF or MR package for the product s/he wants to upgrade.

4. Select the product(s) you want to install from the **Products** tab.

PowerBuilder Installer will also check if the prerequisites have been installed; if not installed, a warning message (and installation instructions if any) will be displayed on the right of page.

5. Based on the product(s) you selected, the available components will be shown in the **Components** tab. Select the components you want to install.

The required components or prerequisites are automatically selected and cannot be de-selected. The installed components/prerequisites will still be listed but cannot be selected (the selection box is greyed out).

6. In the **Locations** tab, use the default download location and installation location or specify where you want the product to be downloaded and installed.

7. If you have selected PowerServer (PB Edition) in the **Products** tab, you can specify the following settings in the **Additional Options** tab.

- specify the IIS Web site where PowerServer will be installed
- select whether to install the the demo application
- specify a SQL Anywhere engine for running the demo
- specify the login user name and password for AEM

8. Click **Install** to begin the installation.

9. When installation is complete, read the status message carefully to make sure installation is successful, and then click **Restart Now** to restart the machine immediately or click **Restart Later** to manually restart the machine later.

## 3.2 Offline Installation


### 3.2.1 Downloading the Offline Installer

An offline installer is designed to help users install the product on the machine where Internet connection is not available or not reliable.

The offline installer can be downloaded from the PowerBuilder Installer. If you cannot run PowerBuilder Installer to get the offline installer, please contact Apeon Support (support@apeon.com) for assistance.

Launch the PowerBuilder Installer, click **Download Offline Installer**.

# PowerBuilder Installer

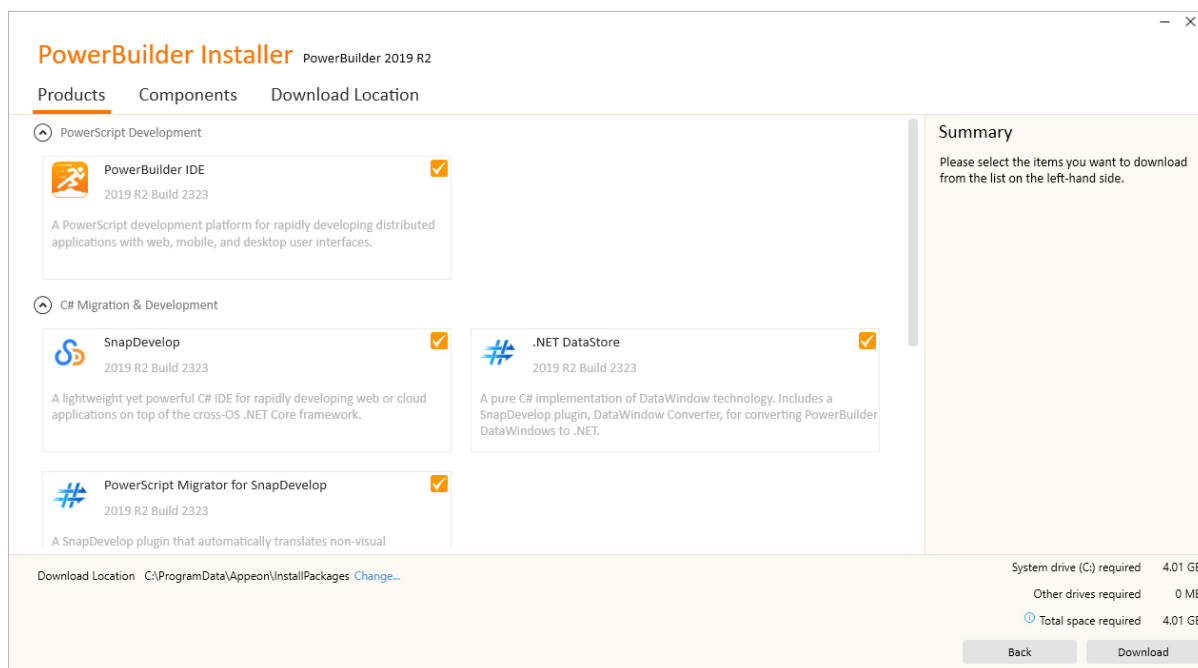


## PowerBuilder 2019 R2

A suite of tools and libraries for developing PowerBuilder projects: PowerScript development, C# migration and development, and cloud application deployment.

[Release Bulletin](#) | [System Requirements](#)

Select the product and component to download; and specify the location where the package will be downloaded (the default location is C:\ProgramData\Apeon\InstallPackages).



**PowerBuilder Installer** PowerBuilder 2019 R2

Products Components Download Location

PowerScript Development

- PowerBuilder IDE**  
2019 R2 Build 2323  
A PowerScript development platform for rapidly developing distributed applications with web, mobile, and desktop user interfaces.

C# Migration & Development

- SnapDevelop**  
2019 R2 Build 2323  
A lightweight yet powerful C# IDE for rapidly developing web or cloud applications on top of the cross-OS .NET Core framework.
- .NET DataStore**  
2019 R2 Build 2323  
A pure C# implementation of DataWindow technology. Includes a SnapDevelop plugin, DataWindow Converter, for converting PowerBuilder DataWindows to .NET.
- PowerScript Migrator for SnapDevelop**  
2019 R2 Build 2323  
A SnapDevelop plugin that automatically translates non-visual

Download Location C:\ProgramData\Apeon\InstallPackages [Change...](#)

System drive (C:) required 4.01 GB  
Other drives required 0 MB  
Total space required 4.01 GB

When download is finished, click the **Open Folder** button to get the standalone installation package (the offline installer). Now you can distribute the offline installer to any computer to install the product.

To install PowerBuilder, continue to read the following sections; to install PowerServer (PB Edition), follow instructions in [Installation Guide for PowerServer \(PB Edition\)](#); to install SnapDevelop, follow instructions in [Installation Guide for SnapDevelop 2019 R2](#).

### 3.2.2 Starting the Offline Installer

Follow these steps to launch the downloaded offline installer to begin the PowerBuilder installation.

1. Exit any programs that are running.

2. Run the *Autorun.exe* file in the offline installer (you must have administrator privileges to run the installer).

3. Click **Install**.

The installer collects basic and licensing information before launching the individual installers for PowerBuilder, PowerServer (PB Edition), and/or SnapDevelop.

### 3.2.3 Selecting Products and Providing Basic Information

The installer collects basic information before beginning the PowerBuilder installation.

---

#### Note

Click **Cancel** to interrupt the installation at any point during this procedure. You can then either exit or resume the installer. If you choose to exit, you can stop the current installation and continue with your other selections, or end the installer completely.

---

To select the PowerBuilder product and provide basic information before installing PowerBuilder:

1. On the start page of the installer, select **Install**.
2. On the Welcome page, click **Next**.  
If you have not installed prerequisites for PowerBuilder, the next page in the wizard informs you what needs to be installed. Click **Cancel** to exit the wizard, or **Next** to continue without installing the prerequisites.
3. On the License Agreement page, read the license agreement, select the **I accept the terms of the license agreement** radio button, and click **Next** to continue.
4. On the Customer Information page, enter your name and your company's name.
5. On the Select Products page, select **PowerBuilder IDE** and click **Next** to continue.

---

#### Note

You can also select to install **PowerServer (PB Edition)**, **PowerServer Toolkit**, **PowerServer Help**, and **PowerServer Web Component**. For installation instructions, refer to the [Installing PowerServer 2019 R2](#) section in the *Installation Guide for PowerServer (PB Edition)*.

You can also select to install **SnapDevelop**, **.NET DataStore**, and **PowerScript Migrator for SnapDevelop**. For installation instructions, refer to the SnapDevelop installation guide.

---

6. On the Choose Destination Location page, click **Next** to accept the destination path shown, or click **Browse** and select a different path, click **OK**, and click **Next**.
7. On the Choose Destination Location For Shared Files page, click **Next** to accept the destination path shown, or click **Browse** and select a different path, click **OK**, and click **Next**. Use the same folder for shared files for all products in this set.

8. On the Specify the SQL Anywhere Engine page, select **Yes** and then specify the location of a SQL Anywhere engine that will be used to run the demo database (PB demo DB) or select **No** if no SQL Anywhere engine, and click **Next**.
9. Complete the installer for the product you selected.

### 3.2.4 Selecting PowerBuilder components

Continue with the installer to select which PowerBuilder components to install.

1. On the Select Components page, unselect any components you do not want to install, and click **Next**.  
You cannot unselect the **PowerBuilder Base Components** option.  
Select or unselect the check boxes of individual components, or click **Select All** or **Unselect All** to change all the check boxes.
2. On the Select Program Folder page, select the program folder to which program icons will be added, or specify a new one; then click **Next**.
3. On the Start Copying Files page, review your settings, then click **Next** to begin installing files, or **Back** to change your selections.
4. On the InstallShield Wizard Complete page, click **Finish** to return to the installer.

After installing, make sure users have write permission for their user profile directories (for example, *Public Documents* in Windows 7), and for *HKEY\_CURRENT\_USER* in the Windows registry.

#### 3.2.4.1 PowerBuilder Components

The installer lets you choose which PowerBuilder components to install.

**Table 3.1: Components**

Component	Description
PowerBuilder Base Components	Installs the ODBC driver, ORCA Software Development Kit (SDK), the PowerBuilder Document Object Model extension, the ability to save DataWindow objects as PDF using the distill or XSL-FO methods, support for rich text, and Oracle JDK. You must install the base components: you cannot unselect this option.
Native Database Interfaces	Interfaces that enable you to interact with server databases natively. Expand the tree view to select interfaces to install.
ADO.NET Driver	Interface to connect to databases using an ADO.NET data provider.
OLE DB Driver	Interface to connect to databases using an OLE DB data provider.
JDBC Driver	Interface to connect to databases using JDBC.
SCC Interface	Interface for connecting to any source code control system that supports the Microsoft SCC interface.
PB Native Interface	An SDK for developing extensions to PowerBuilder in C++. Optional wizards are installed in Visual Studio 2005 and Visual Studio .NET 2002 and 2003 if they are available on your system.

Component	Description
EJB Client	The EJB Client PBNI extension, which enables you to develop clients for EJBs running on J2EE-compliant servers.
Web Services	The extensions and other files that enable you to create clients for Web services using the .NET or EasySoap Web service engines.
Tutorial	Source files for the tutorial in the Getting Started book. If you want to do the PowerBuilder tutorial or use the code examples, install SQL Anywhere if it is not already installed on your computer. When you install PowerBuilder, the installer creates an ODBC data source for the demo database. If SQL Anywhere is not installed on your system when you install PowerBuilder, the installer does not install the demo database, code examples, or tutorial files.
Demo Database	A SQL Anywhere database used in the tutorial, the Code Examples sample application, and examples in the documentation.
Code Examples	The Code Examples application, which demonstrates many coding techniques.
Translation Toolkit	Tools to help you translate applications into other languages.
PowerBuilder Resource Monitor	A utility to help determine whether there are sufficient USER/GDI resources available in the operating system to open a painter.
PowerBuilder Runtime Packager	A tool that packages files required for deployment into an <i>MSI</i> file.
Help Files	Compiled CHM help file for PowerBuilder.

### 3.2.5 Completing the Offline Installer

After all the products you selected have been installed, you return to the installer.

To complete the installer:

1. On the InstallShield Wizard Complete page, click **Finish** to complete the installation.

If you do not unselect the check boxes on this page, the installer displays the readme file.

2. On the System Reboot Required page, click **Finish** to reboot your computer, or choose to reboot your computer later.

After installing PowerBuilder, always shut down and restart your computer before using it.

PowerBuilder generates a log file *PBLog\_2019.txt* in %Windows%\System32\ApeonInstallLog (in 32-bit OS) or %Windows%\SysWOW64\ApeonInstallLog (in 64-bit OS).

#### 3.2.5.1 What the Installer Does

The installer installs files and updates the Windows registry.

The installer:

- Installs Apeon files in an *Apeon* directory

- Installs writable Apeon files to directories that are shared by all users
- Installs system files in the Windows operating system path
- Creates a program group and icons for each product installed
- Creates uninstall files to identify what needs to be removed if you uninstall a product
- Makes changes to the Windows registry
- Creates or updates the INI file *PB.INI* (for PowerBuilder)

### 3.2.5.1.1 Writable files shared by all users

As part of its Federal Desktop Core Configuration (FDCC) compliance configuration, PowerBuilder installs writable files that are shared by all users. On Windows 7/8.1/10, it is *C:\Users\Public\Documents\Apeon\PowerBuilder 19.0*.

The shared files include:

- The PB Demo databases (*pbdemo2019R2.db* and *pbdemo2019R2u.db*)
- All Code Examples directories and files
- The PowerBuilder compiled HTML Help files
- The Translation Toolkit directories and files

### 3.2.5.1.2 Files reserved for individual users

Other writable files are installed in the default *Program Files\Apeon* subdirectories, but are copied to different locations the first time a user starts PowerBuilder. In this way, each user gets a private copy of these files.

The following table lists the files that are copied and updated in the directories of users. In the table header, `UserName` is a variable that can be replaced by the user name of a PowerBuilder user. For Windows 7, the `UserName` directory is under the *C:\Users* directory.

**Table 3.2:**

In <i>C:\... UserName </i> subdirectory	Files copied or updated
On Windows 2008, Windows 7/8.1/10: <ul style="list-style-type: none"> <li>• <i>AppData\Local\Apeon\PowerBuilder 19.0</i></li> </ul>	<ul style="list-style-type: none"> <li>• Initialization files (<i>PB.INI, PBLAB190.ini, PBODB190.ini</i>)</li> </ul>
On Windows 2008, Windows 7/8.1/10: <ul style="list-style-type: none"> <li>• <i>Documents\Apeon\PowerBuilder 19.0\Tutorial</i></li> </ul>	<ul style="list-style-type: none"> <li>• Files for the PowerBuilder Getting Started tutorial</li> </ul>

The locations of writable PowerBuilder files reserved for individual use are set in `HKEY_CURRENT_USER` registry entries for each PowerBuilder user. For example, the location of the *PB.INI* file that is copied to each user's local application data directory is registered under the registry key `HKEY_CURRENT_USER\Software\Sybase\PowerBuilder\19.0\InitPath`.

### 3.2.5.1.3 Registry changes

The installer makes the following changes to the Windows registry:

- Creates or updates the key in *HKEY\_CURRENT\_USER\Software* and *HKEY\_LOCAL\_MACHINE\Software*
- Updates system and user paths in *HKEY\_CURRENT\_USER\Environment*
- Adds the appropriate paths to the registry path *HKEY\_LOCAL\_MACHINE\Software\Microsoft\Windows\CurrentVersion\App Paths*
- Adds the paths of compiled HTMLHelp files to the registry path *HKEY\_LOCAL\_MACHINE\Software\Microsoft\Windows\HTMLHelp*

### 3.2.6 Installing in Silent (Unattended) Mode

Install PowerBuilder from a Command Prompt window or script, without displaying messages or windows during the installation process.

#### Prerequisites

Complete installation planning.

1. Accept the license agreement.
2. Specify the SQL Anywhere engine.
3. Configure the **silentinstall.bat** file.
4. Run **silentinstall.bat** to install PowerBuilder.

#### 3.2.6.1 Accepting the License Agreement

Accept the Apeon license agreement before running the silent installation.

Edit the *silentinstall.bat* file located in the installation package and change the value of set AgreeToApeonLicense from false to true.

```
set AgreeToApeonLicense=false
```

#### 3.2.6.2 Specifying the SQL Anywhere Engine

Specify the location of a SQL Anywhere engine before running the silent installation.

Edit the *pbsetup.iss* file located in the PowerBuilder IDE installation package and set the value of szSqlAnywhereDir.

```
szSqlAnywhereDir=C:\Program Files\SQL Anywhere 16\Bin64
```

#### 3.2.6.3 Silent Install Commands

This topic describes the *silentinstall* command syntax for PowerBuilder.

To run the silent installation from a Windows Command Prompt, run this command in the installation package:

```
silentinstall.bat  
[ "opt=product" "dir=directoryName" "shr=sharedDirectoryName" "log=logFileName" ]
```



```
[ { help | /? } ]
```

The parameters can be listed in any order and are not case sensitive. Parameter values are also not case sensitive.

**Table 3.3:**

Silent installation parameter	Description
opt	<p>Specifies the name of the products to install.</p> <ul style="list-style-type: none"> <li>• <b>All</b> Installs PowerBuilder, PowerServer (PB Edition), PowerServer Toolkit, PowerServer Help, PowerServer Web Component, and SnapDevelop.</li> <li>• <b>PB</b> Installs only PowerBuilder</li> <li>• <b>PSM</b> Installs only PowerServer (PB Edition)</li> <li>• <b>PST</b> Installs only PowerServer Toolkit</li> <li>• <b>PSH</b> Installs only PowerServer Help</li> <li>• <b>PSWC</b> Installs only PowerServer Web Component</li> <li>• <b>SDEV</b> Installs only SnapDevelop</li> <li>• <b>dwexp</b> Installs only .NET DataStore</li> <li>• <b>migr</b> Installs only PowerScript Migrator</li> </ul> <p>Multiple products can be separated by a slash ("/"), for example, opt=PB/PSM/PST.</p>
dir	<p>Indicates the main installation directory. If you omit this parameter, silentinstall installs the product to the <i>sysDriver\Program Files\Apeon\productName</i> directory, where <i>sysDriver</i> is the main computer drive, and <i>productName</i> is PowerBuilder 2019 R2.</p>
shr	<p>Indicates the shared directory for PowerBuilder. If you omit this parameter, this directory installs to <i>sysDriver\Program Files\Apeon\Shared</i>.</p>
log	<p>Names the log file for the installation. If you omit this parameter, the log file is written to the system <i>Temp</i> directory with the file name, <i>silentinstall.log</i>.</p>
help or /?	<p>Displays command syntax and parameters instead of running the command.</p>

The following example uses all parameters for the silent installation command:

```
silentinstall.bat "opt=pb" "dir=D:\apeon\pb190" "shr=D:\apeon\shared" "log=D:\apeon\install.log"
```

When installing PowerBuilder, the silent installation writes warnings to its log file if the computer does not have the correct version of any of these items:

- SQL Anywhere
- Microsoft .NET Framework
- Microsoft .NET Framework SDK
- Microsoft IIS

### 3.3 Common installation issues

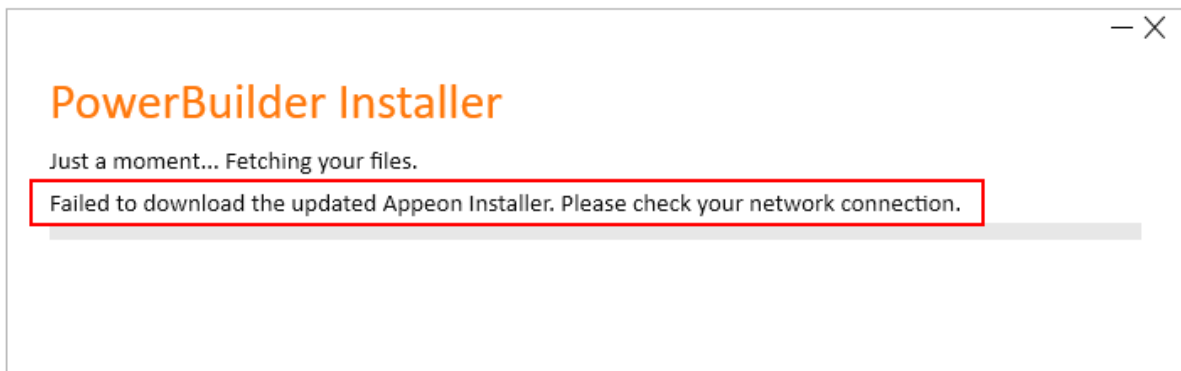
The following subsections also apply to InfoMaker Installer.

#### 3.3.1 Failed to download the PowerBuilder/InfoMaker Installer

##### Phenomenon:

When you run PowerBuilder Installer from the Web browser or when you run the downloaded PowerBuilderInstaller\_bootstrapper.exe from the local computer, you may get the following error: **"Failed to download the updated PowerBuilder Installer. Please check your network connection"**.

**Figure 3.1: Error message**



##### Cause 1:

The current machine has no Internet connections, or the current machine connects to Internet through a proxy that requires login credentials (which is unsupported by PowerBuilder Installer currently).

##### Solution:

Make sure the current machine has access to the Internet without using a proxy or requiring any login credentials.

If the machine is not allowed to access Internet at all, you can run the PowerBuilder offline installer to install the product on this machine. For how to get the PowerBuilder offline installer, refer to [Section 3.2.1, "Downloading the Offline Installer"](#).

##### Cause 2:

The firewall or anti-virus software on the current machine allows access to `PowerBuilderInstaller_bootstrap.exe` only, but not the other files that are required by `PowerBuilderInstaller_bootstrap.exe`.

**Solution:**

Step 1: Try to access <https://file.appeon.com/download/Installer/PowerBuilder/PowerBuilderInstaller.zip> in your Web browser.

If you get a "404 File or directory not found" error, then take Step 2 to resolve this error.

Step 2: Configure the firewall and/or the anti-virus software to allow access to **https://file.appeon.com/download/Installer/\***.

This will allow access to all files that are necessary for running PowerBuilder Installer.

**Cause 3:**

The firewall or anti-virus software does not allow the PowerBuilder Installer files (mainly **PowerBuilderInstaller\_setup.exe** and **PowerBuilderInstaller.exe**) to access Internet and download files.

**Solution:**

The **PowerBuilderInstaller\_setup.exe** and **PowerBuilderInstaller.exe** files will be first downloaded to the local computer, and then they will need to access Internet to download and install more files. Therefore, you need to make sure the following three files have proper rights to access Internet.

1. `%USERPROFILE%\AppData\Local\Temp\%RarSFX#\PowerBuilderInstaller_setup.exe`

`%USERPROFILE%`: the current Windows user profile folder, for example, `C:\Users\appeon\`.

`%RarSFX#%`: If there are more than one RarSFX folder, use the one with the largest number at the end of the folder name. For example, `C:\Users\appeon\AppData\Local\Temp\RarSFX4`.

2. `%Appeon%\PowerBuilder Installer\update\PowerBuilderInstaller_setup.exe`

3. `%Appeon%\PowerBuilder Installer\PowerBuilderInstaller.exe`

`%Appeon%`: normally "C:\Program Files\Appeon" in 32-bit Windows and "C:\Program Files\Appeon (x86)" in 64-bit Windows.

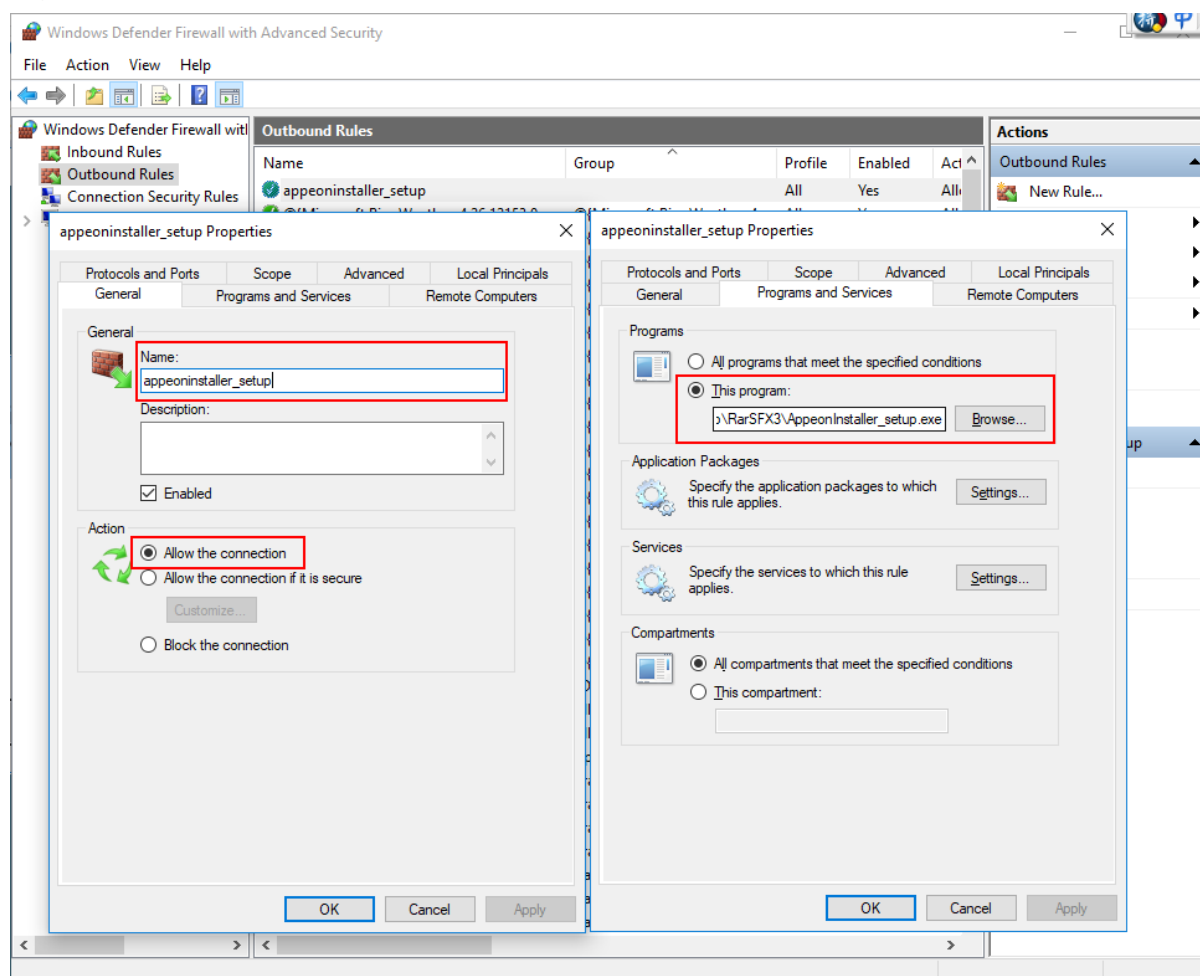
These two files may not exist until after PowerBuilder Installer is successfully downloaded. But you can still specify them in the firewall or anti-virus software before they are downloaded.

Step 1: Configure the firewall and/or anti-virus software to allow the above three files to connect with Internet and download files.

The following takes "Windows Defender Firewall with Advanced Security" as an example to show you how to do that.

In **Outbound Rules** of Windows Defender Firewall with Advanced Security, create new rules with the following settings:

1. In the **Name** text box on the **General** tab, specify a name (for example PowerBuilderInstaller\_setup) for the rule.
2. In the **Action** section on the **General** tab, select **Allow the connection**.
3. In the **Programs** section on the **Programs and Services** tab, select **This program** and specify the absolute path of the file, for example, C:\Users\apeon\AppData\Local\Temp\RarSFX4\PowerBuilderInstaller\_setup.exe.
4. Repeat the above three steps to add the second and third rules which point to the absolute path of the following two files respectively:
  - C:\Program Files\Apeon\PowerBuilder Installer\update\PowerBuilderInstaller\_setup.exe (in 32-bit Windows), or  
C:\Program Files (x86)\Apeon\PowerBuilder Installer\update\PowerBuilderInstaller\_setup.exe (in 64-bit Windows)
  - C:\Program Files\Apeon\PowerBuilder Installer\PowerBuilderInstaller.exe (in 32-bit Windows), or  
C:\Program Files (x86)\Apeon\PowerBuilder Installer\PowerBuilderInstaller.exe (in 64-bit Windows)

**Figure 3.2: Create the Outbound Rules**

Step 2: Run PowerBuilder Installer again to verify that the error is resolved.

### 3.3.2 PowerBuilder/InfoMaker Installer blocked by Windows Defender SmartScreen

#### Phenomenon:

In some environments, when you run PowerBuilder Installer, Windows Defender SmartScreen shows a warning page that the installer is an unrecognized app, or the anti-virus software display warnings like "This file might be dangerous".

**Figure 3.3: Windows Defender SmartScreen**



#### Cause:

Windows Defender SmartScreen and some anti-virus software determine whether a file is potentially malicious by checking if the file is well known and downloaded by many users, while PowerBuilder Installer is available to the public not long ago.

#### Solution:

If Windows Defender SmartScreen or the anti-virus software offers the "**Run Anyway**" option, you should be safe to select this option to proceed with the installation, because PowerBuilder Installer is digitally signed by "Apeon Inc." and is free of adware, spyware or any form of malware.

If PowerBuilder Installer has an established reputation and you still see the warning, you may need to update the malware definitions of Windows Defender SmartScreen or the anti-virus software on your local machine. Take Windows Defender SmartScreen as an example, you can update the definitions by the following steps:

1. Run the Command Prompt as administrator and change directory to C:\Program Files \Windows Defender
2. In the command window, execute "MpCmdRun.exe -removedefinitions - dynamicsignatures"
3. In the command window, execute "MpCmdRun.exe -SignatureUpdate"

## 4 Postinstallation Tasks

Before using PowerBuilder after installation, you might need to perform some migration or configuration tasks.

- Upgrading applications to the current version of PowerBuilder 2019 R2

If you have applications and PowerBuilder library files (PBLs) that you created in an earlier version of PowerBuilder, you can upgrade them to version 2019 R2. Before you do, make sure your PBLs can be successfully regenerated under the earlier version, and make backup copies.

PowerBuilder 2019 R2 are Unicode enabled, and some changes are made to your code when you upgrade an application from PowerBuilder 9.x or earlier. For details, see Section 5.9, “Upgrading targets” in *Users Guide*.

Also read the [upgrade issues](#) section in the PowerBuilder release bulletin and the [Upgrading PowerBuilder Applications](#) technical document.

- Setting up your DBMS

Your DBMS might require additional setup procedures for use with PowerBuilder. For details, see [Connecting to Your Database](#).

- Upgrading databases for jConnect for JDBC

Might be required to prepare SQL Anywhere or Adaptive Server® Enterprise databases for jConnect 5.5.

- Installing Ghostscript

Required if you want to use the distill method for saving DataWindows as PDF.

- Installing PostScript drivers

Required if you want to use the distill method for saving DataWindows as PDF.

### 4.1 Upgrading Databases for jConnect for JDBC

Prepare SQL Anywhere or Adaptive Server Enterprise databases for jConnect by installing additional tables and stored procedures.

jConnect provides these scripts to install the required stored procedures and tables. Refer to the installation guide for jConnect for detailed information.

### 4.2 Installing Ghostscript

Install Ghostscript if you plan to use the distill method for saving DataWindows as PDF.

To install Ghostscript:

1. Into a temporary directory on your computer, download the self-extracting executable file for the version of Ghostscript you want from one of the sites listed on the Ghostscript Web site at <http://ghostscript.com/>.
2. Run the executable file to install Ghostscript on your system.

The default installation directory is *C:\Program Files\gs*.

### 4.3 Installing PostScript Drivers

This topic describes how to install and use PostScript drivers for saving DataWindows as PDF.

Using the distill method for saving DataWindows as PDF requires a PostScript printer or printer driver installed on your system. Use the Windows Add Printer wizard to install a PostScript printer. If a PostScript printer was never installed on your computer or the required Microsoft *pscript5.dll* file is not available, the wizard might prompt you to insert a Windows operating system installation CD.

- To add a PostScript printer to your system:
  1. Select **Settings Printers** from the Windows **Start** menu.
  2. Double-click **Add Printer**.
  3. Specify a local printer.
  4. Specify **FILE:** as the port.
  5. Select a manufacturer (for example, HP) and a printer with the designation PS (such as HP LaserJet Series 4050 PS).

---

#### Note

Some printers do not handle images correctly. For example, the HP Color LaserJet PS does not display images in the PDF output, and the HP LaserJet 4/4M Plus PS 600 displays color images using greyscale.

---

6. Accept the default name or enter a shorter name for the printer.
  7. Complete the wizard.
- To use the print driver in the DataWindow painter:
    1. Select the **Distill Custom PostScript** check box on the Data Export property page for PDF export.
    2. On the Print Specifications page, specify the printer name (added to the Printer Settings dialog in the previous procedure).
  - To use the print driver in a script, set the Distill.CustomPostScript and Printer properties.

For example:

```
dw_1.Object.DataWindow.Export.PDF.Distill.CustomPostScript=1  
dw_1.Object.DataWindow.Printer="HP LaserJet Series 4050 PS"
```



## 5 Activating PowerBuilder

Starting from PowerBuilder 2017, the developer is required to log in and activate PowerBuilder first before using it. If you do not have a valid account to log in, please contact your license administrator to create an account for you. And depending on whether the machine where PowerBuilder is installed has Internet access or not, the account should be assigned with an online license or offline license by your license administrator.

### 5.1 Online activation

Online activation requires you to input an account which is assigned with a valid online license by your license administrator. And Internet access is required during the activation process, because the online license will be activated by the Appeon license server.

---

#### Note

This section talks about activating **PowerBuilder** only, if you want to activate **PowerServer (PB Edition)**, please follow the [Activating PowerServer \(PB Edition\)](#) section in the Appeon License User Guide; and if you want to activate **SnapDevelop**, please follow the [Activating SnapDevelop](#) section in the Appeon License User Guide.

---

#### 5.1.1 Activating with an online license

To activate PowerBuilder using an account assigned with an online license, follow these steps:

Step 1 -- Launch PowerBuilder IDE. When you launch PowerBuilder IDE for the first time after installation, the **Log in to PowerBuilder** window displays automatically.

Step 2 -- Click **Log in** in the **Log in to PowerBuilder** window.

Step 3 -- Input the user name and password for your account, and then click **Log In**.

Make sure the current machine can connect to Internet, as your account will be validated and the binding license will be activated by the Appeon license server immediately. Once validation and activation is successful, you will be logged in to PowerBuilder IDE.

To view the account and license information, click your account name on the right top of the PowerBuilder IDE and then click **Account Management** in the popup menu.

#### 5.1.2 Refreshing an online license

When an online license is renewed or upgraded by your license administrator, you will need to refresh the online license information in the PowerBuilder IDE accordingly.

You refresh an online license by clicking the **Refresh license** link in the account information window (opened by selecting the **Account Management** popup menu). Internet access is required.

#### 5.1.3 Log out to de-activate

Once you log in to PowerBuilder successfully, which also means the online license is activated successfully, you should stay login unless you absolutely need to log out to de-activate the license, for example, to move PowerBuilder to a different machine.

To de-activate an online license, you log out of PowerBuilder by clicking the **Sign out** link in the account information window (opened by selecting the **Account Management** popup menu). Internet access is required.

Once logout is successful, you will be shown with the **Log in to PowerBuilder** window again.

When you uninstall PowerBuilder with Internet connection, you will be automatically logged out PowerBuilder when the uninstall process starts; when you uninstall PowerBuilder without Internet connection, you will be prompted to contact your license administrator to de-activate your license on the website and then the uninstall process starts.

## 5.2 Offline activation

Offline license is created to meet the needs where the machine with PowerBuilder installed does not have Internet connection.

An account assigned with an offline license can either be used to log in to PowerBuilder with or without Internet connection. When an account with an offline license is logged in with Internet connection, the process is as easy as the account with an online license.

**Please notice that cloud-based machines or virtual machines where PowerBuilder is installed cannot be activated using an offline license; only online license can be used.**

---

### Note

This section talks about activating **PowerBuilder** only, if you want to activate **PowerServer (PB Edition)**, please follow the [Activating PowerServer \(PB Edition\)](#) section in the Appeon License User Guide; and if you want to activate **SnapDevelop**, please follow the [Activating SnapDevelop](#) section in the Appeon License User Guide.

---

### 5.2.1 Activating with an offline license

To activate an offline license, follow these steps:

Step 1 -- In the **Log in to PowerBuilder** window, click **Activate offline license manually**.

Step 2 -- Input the user name and password for your account, and select whether to activate the license with or without Internet connection.

- If **Activation with Internet connection** is selected, make sure your current machine can access Internet, and the offline license will be activated by the Appeon license server immediately after you click **Activate**.
- If **Activation without Internet connection** is selected, you will need to take the following steps to activate the offline license:
  1. Click **Generate Client Request** to create the client request (a text string), and then click **Copy Client Request** to copy the string to the clipboard.
  2. Transfer the string to a machine with Internet connection, and visit the **License Activation** web page by this URL: <https://www.appeon.com/license/get/activation-code?type=activation>. On the web page, paste the string to the text box and then click **Submit**. A server response (another text string) is generated.

3. Transfer the server response string back to PowerBuilder, and paste the string to the **Server Response** text box, and then click **Activate**.
4. Click **OK** when the activation completes.

Once the offline license is activated successfully, you will be logged in to PowerBuilder IDE.

To view the corresponding license information, click the menu **Help | Offline License Management | License Info** in the PowerBuilder IDE.

### 5.2.2 Renewing an offline license

When an offline license is renewed by your license administrator, you will need to renew the offline license information in the PowerBuilder IDE accordingly.

To renew an offline license in PowerBuilder IDE, follow these steps:

Step 1 -- In the PowerBuilder IDE, select **Help | Offline License Management | Renew**.

Step 2 -- Select whether to renew the offline license with or without Internet connection.

- If **Renew with Internet connection** is selected, make sure your current machine can access Internet, and the offline license will be renewed by the Appeon license server immediately after you click **Renew**.
- If **Renew without Internet connection** is selected, you will need to take the following steps to renew the offline license:
  1. Click **Generate Client Request** to generate a request string.
  2. Click **Copy Client Request** to get the request string, and transfer the string to a machine with Internet connection.
  3. On the machine with Internet connection, visit the **License Renewal** web page by this URL: <https://www.appeon.com/license/get/activation-code?type=renewal>. On the web page, paste the string to the text box and then click **Submit**. A response string will be generated if the license is renewed successfully by the Appeon license server.
  4. Transfer the response string back to the PowerBuilder IDE, and paste the string to the **Server Response** text box, and then click **Renew**.
  5. Click **OK** when the renew completes.

The renewal license will take effect the day after the current license expires.

### 5.2.3 Upgrading an offline license

When an offline license is upgraded by your license administrator, for example, from a Professional Edition to a CloudPro Edition, you will need to upgrade the offline license information in the PowerBuilder IDE accordingly.

To upgrade an offline license in PowerBuilder IDE, follow these steps:

Step 1 -- In the PowerBuilder IDE, select **Help | Offline License Management | Upgrade**.

Step 2 -- Select whether to upgrade the offline license with or without Internet connection.

- If **Upgrade with Internet connection** is selected, make sure your current machine can access Internet, and the offline license will be upgraded by the Apeon license server immediately after you click **Upgrade**.
- If **Upgrade without Internet connection** is selected, you will need to take the following steps to upgrade the offline license:
  1. Click **Generate Client Request** to generate a request string.
  2. Click **Copy Client Request** to get the request string, and transfer the string to a machine with Internet connection.
  3. On the machine with Internet connection, visit the **License Upgrade** web page by this URL: <https://www.appeon.com/license/get/activation-code?type=upgrade>. On the web page, paste the string to the text box and then click **Submit**. A response string will be generated if the license is upgraded successfully by the Apeon license server.
  4. Transfer the response string back to the PowerBuilder IDE, and paste the string to the **Server Response** text box, and then click **Upgrade**.
  5. Click **OK** when the upgrade completes.

#### 5.2.4 De-activating an offline license

Once you log in to PowerBuilder successfully, which also means the offline license is activated successfully, you should stay login unless you absolutely need to de-activate the license, for example, to move PowerBuilder to a different machine.

To de-activate an offline license, follow these steps:

Step 1 -- In the PowerBuilder IDE, select **Help | Offline License Management | Deactivate**.

Step 2 -- Depending on whether the machine has Internet connection, select to deactivate the license with or without Internet connection.

- If **Deactivation with Internet connection** is selected, make sure your current machine can access Internet, and the offline license will be deactivated by the Apeon license server immediately after you click **Deactivate** and confirm the deactivation in the dialog box.
- If **Deactivation without Internet connection** is selected, you will need to take the following steps to deactivate the offline license:
  1. Click **Deactivate / Copy Deactivation Request** to generate and copy the request string. Although the offline license is deactivated from PowerBuilder immediately after you click **Deactivate**, you should not stop here, because you should also deactivate the license from the Apeon license server to release the license for the subsequent use.  
  
The string is by default saved to the Users\  - 2. Transfer the string to a machine with Internet connection.

3. On the machine with Internet connection, visit the **License Deactivation** web page by this URL: <https://www.appeon.com/license/get/activation-code?type=deactivation>. On the web page, paste the copied string to the text box and then click **Submit**. You will be prompted if the license is de-activated successfully from the Appeon license server.

## 6 Uninstalling PowerBuilder

This topic describes how to uninstall PowerBuilder.

When you start to uninstall PowerBuilder, you will be asked to deal with the license first:

- If you are using an online license, when you uninstall PowerBuilder with Internet connection, you will be automatically logged out PowerBuilder when the uninstall process starts; when you uninstall PowerBuilder without Internet connection, you will be prompted to contact your license administrator to de-activate your license on the website and then the uninstall process starts.
- If you are using an offline license, you can uninstall PowerBuilder without deactivating the license (if you want to continue using the license on this computer), or deactivate the license and uninstall PowerBuilder (if you want to move the license to a different computer).

For how to log out PowerBuilder or deactivate an offline license, refer to [Log out](#) or [Deactivating an offline license](#).

Use one of these methods to run the uninstall program for the product that you want to uninstall:

- Add or Remove Programs dialog box
  1. Make a backup copy of any files you might want to reuse (such as DB, INI, and PBL files) if you plan to reinstall.
  2. Open the Control Panel from the Start menu and double-click the **Add/Remove Programs** button.
  3. On the Install/Uninstall tab page, select the product to uninstall, click **Add/Remove**, and click **Yes** when prompted to confirm that you want to uninstall the tool.
  4. If you are prompted to delete a shared file, click the appropriate response.

If the usage count for a system file in the registry indicates that the file is no longer being used, the uninstall program asks if you want to delete the file. Some applications do not increment the usage count; therefore, **do not delete a file unless you are sure it is not being used by another application.**
- Silent uninstallation

Run the *silentuninstall.bat* file, similarly like how you configure and run the the *silentinstall.bat* (see [Section 3.2.6.3, “Silent Install Commands”](#)).

The uninstall program removes:

- Shared and standard program files
- Folder items
- Program folders

- Program directories
- Program registry entries

The uninstall program deletes file and icon groups, as well as system and user path settings in the registry and INI files. Simply deleting directories does not fully uninstall these products.

---

**Note**

The installer increments the usage count in the registry for each shared Appeon DLL and each shared system DLL. The uninstall program decrements that count. The uninstall program does not try to delete a shared DLL until the usage count reaches zero.

---

---

**Note**

Unlike the installer, the uninstall program has no **Back** or **Cancel** button. Once you click **Yes** in the procedure below, the program cannot be stopped.

---