

Appeon Web 6.6 Installation Guide for EAServer Unix \Linux

Appeon for PowerBuilder 2013 (on EAServer)
FOR UNIX\LINUX

DOCUMENT ID: DC00811-01-0651-01

April 28, 2013

Copyright © 2000-2011 by Appeon Corporation. All rights reserved.

This publication pertains to Appeon software and to any subsequent release until otherwise indicated in new editions or technical notes. Information in this document is subject to change without notice. The software described herein is furnished under a license agreement, and it may be used or copied only in accordance with the terms of that agreement.

No part of this publication may be reproduced, transmitted, or translated in any form or by any means, electronic, mechanical, manual, optical, or otherwise, without the prior written permission of Appeon Corporation.

Appeon, the Appeon logo, Appeon Developer, Appeon Enterprise Manager, AEM, Appeon Server and Appeon Server Web Component are registered trademarks of Appeon Corporation.

Sybase, Adaptive Server Anywhere, Adaptive Server Enterprise, iAnywhere, PowerBuilder, Sybase Central, and Sybase jConnect for JDBC are trademarks or registered trademarks of Sybase, Inc.

Java and JDBC are trademarks or registered trademarks of Sun Microsystems, Inc.

All other company and product names used herein may be trademarks or registered trademarks of their respective companies.

Use, duplication, or disclosure by the government is subject to the restrictions set forth in subparagraph (c)(1)(ii) of DFARS 52.227-7013 for the DOD and as set forth in FAR 52.227-19(a)-(d) for civilian agencies.

Appeon Corporation, 1/F, Shell Industrial Building, 12 Lee Chung Street, Chai Wan District, Hong Kong.

Contents

1 About This Book	1
1.1 Audience	1
1.2 How to use this book	1
1.3 Related documents	1
1.4 If you need help	3
2 Introduction	4
2.1 Overview	4
2.2 System architecture	4
2.3 Appeon editions	5
2.4 Appeon components	6
2.4.1 Appeon Developer (Windows only)	6
2.4.2 Appeon Server	6
2.4.3 Appeon Server Web Component (for third-party Web servers)	6
2.4.4 Appeon Help (Windows only)	6
3 Installation Requirements	7
3.1 Client requirements	7
3.1.1 Software requirements	7
3.1.2 Hardware requirements	7
3.2 Appeon Server requirements	7
3.2.1 Software requirements	7
3.2.2 Hardware requirements	7
3.2.3 (Optional) Third-party Web Server requirements	8
3.3 Database server requirements	8
4 Installing Appeon Web 6.6	9
4.1 Overview	9
4.2 Installation scenarios	9
4.2.1 Remote Appeon Server using EAServer HTTP server	10
4.2.2 Remote Appeon Server using a third-party Web server	10
4.2.3 Appeon Server Cluster	11
4.3 Two installation methods	11
4.4 Appeon Web 6.6 new installation	12
4.4.1 Appeon Server installation	12
4.4.1.1 Prerequisites	12
4.4.1.2 Installation instructions	12
4.4.1.3 Installing EAServer license	15
4.4.2 Appeon Server Web Component installation (for third-party Web servers only)	16
4.4.2.1 Prerequisites	16
4.4.2.2 Installation instructions	16
4.5 Appeon Web 6.6 upgrade installation	16
4.5.1 Upgrading Appeon Server	17
4.5.1.1 Prerequisites	17
4.5.1.2 Upgrade instructions	17
4.5.2 Upgrading Appeon Server Web Component	19
4.5.2.1 Prerequisites	19
4.5.2.2 Upgrade instructions	19

4.6 Starting/Stopping Appeon Server	20
5 Configuring Appeon Server Cluster	21
6 Post-Installation Configuration Tasks	22
6.1 Overview	22
6.2 Configuration for client machine	23
6.2.1 Configuring IE security settings	23
6.2.2 Logging in as administrator or normal user	25
6.2.2.1 Using IE 8.0, 9.0 or 10	26
6.2.2.2 Using IE 7.0 (or earlier)	28
6.2.3 Verifying Appeon ActiveX control installation	29
6.3 System language settings	30
7 Uninstalling Appeon Web 6.6	32
7.1 Overview	32
7.2 Uninstalling Appeon Server	32
7.2.1 Uninstalling EAServer 6.3 that is installed with Appeon Server.....	32
7.3 Uninstalling Appeon Server Web Component (for third-party Web servers only)	33
Index	34

1 About This Book

1.1 Audience

This book is for users who want to install Appeon® for PowerBuilder® 2013 for EAServer.

1.2 How to use this book

There are seven chapters in this book.

Chapter 1: About This Book

A general description of this book.

Chapter 2: Introduction

An overview of Appeon Web 6.6 for EAServer Unix/Linux and its system architecture.

Chapter 3: Installation Requirements

The system requirements for installing Appeon Web 6.6 for EAServer Unix/Linux.

Chapter 4: Installing Appeon Web 6.6

Instructions for installing and upgrading Appeon Server, Appeon Developer, and Appeon Server Web Component.

Chapter 5: Configuring Appeon Server Cluster

Instructions for configuring an Appeon Server cluster.

Chapter 6: Post-Installation Configuration Tasks

Instructions on configurations required for Appeon system architecture that affect the running of all applications.

Chapter 7: Uninstalling Appeon Web 6.6

Instructions for uninstalling Appeon Web 6.6 for EAServer Unix/Linux.

1.3 Related documents

Appeon provides the following user documents to assist you in understanding Appeon for PowerBuilder and its capabilities:

- Introduction to Appeon:
Guides you through all the documents included in Appeon for PowerBuilder.
- New Features Guide:
Introduces new features and changes in Appeon for PowerBuilder.
- Appeon Mobile Tutorials:
Gives instructions on deploying, running, and debugging Appeon applications, distributing native mobile apps, and configuring Appeon server clusters.
- Appeon Installation Guide:

Provides instructions on how to install Appeon for PowerBuilder successfully.

- Development Guidelines for Appeon Mobile:

Introduces general guidelines on developing apps with Appeon Mobile.

- Migration Guidelines for Appeon Web:

A process-oriented guide that illustrates the complete diagram of the Appeon Web migration procedure and various topics related to steps in the procedure, and includes a tutorial that walks the user through the entire process of deploying a small PowerBuilder application to the Web.

- Features Help for Appeon:

Provides a detailed list of supported PowerBuilder features which can be converted to the Web/Mobile with Appeon as well as which features are unsupported.

- Appeon Developer User Guide:

Provides instructions on how to use the Appeon Developer toolbar in Appeon for PowerBuilder.

- Workarounds & API Guide:

Provides resolutions for issues, such as unsupported features, etc., encountered when using Appeon for PowerBuilder.

- Appeon Workspace User Guide:

Gives a general introduction on Appeon Workspace and provides detailed instructions on how to use the app.

- Appeon Server Configuration Guide:

Provides instructions on how to configure Appeon Server Monitor, establish connections between Appeon Servers and database servers, and configure AEM for maintaining Appeon Server and Appeon deployed applications.

- Web Server Configuration Guide:

Describes configuration instructions for Web Servers to work with a single Appeon Server or an Appeon Server cluster.

- Troubleshooting:

Provides information on troubleshooting issues; covering topics, such as product installation, application deployment, AEM, and Appeon application runtime issues.

- Appeon Performance Tuning Guide:

Provides instructions on how to modify a PowerBuilder application to achieve better performance from its corresponding Web/mobile application.

- Testing Appeon Web Applications with QTP:

Provides instructions on how to test Appeon Web applications with QTP.

1.4 If you need help

If you have any questions about this product or need assistance during the installation process, access the Technical Support Web site at <http://www.appeon.com/support>.

2 Introduction

2.1 Overview

Apeon for PowerBuilder deploys entire PowerBuilder applications to the Web automatically.

From the native source code of PowerBuilder applications, Apeon for PowerBuilder can generate **bona fide** n-Tier Web applications that precisely replicate the Client/Server user interface with HTML running in standard Microsoft Web browsers. These Web applications offer the rich user experience of the original PowerBuilder applications and deliver the superior Quality Of Service (QOS) of the n-Tier Web architecture and J2EE platform, as well as greater availability, scalability, security and reliability.

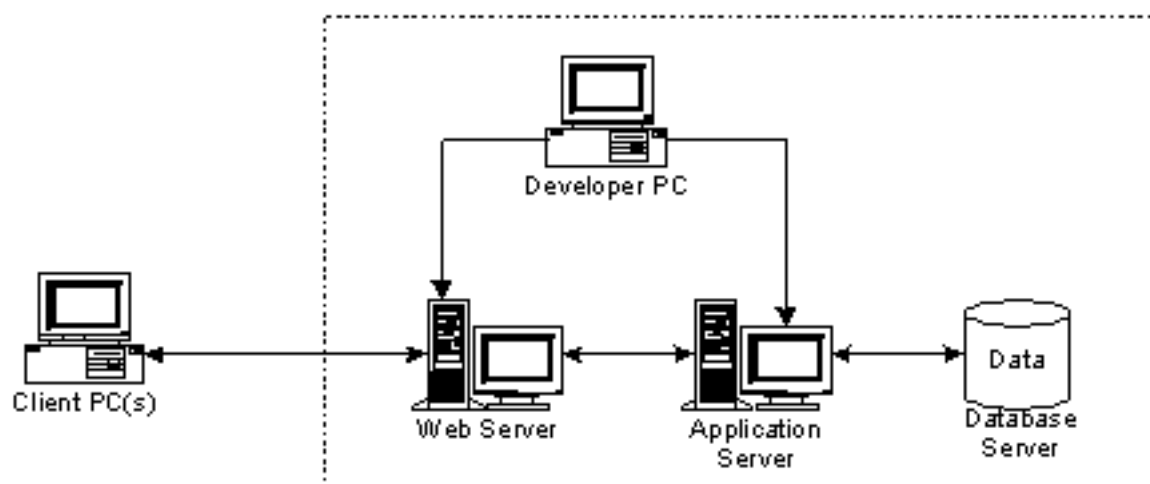
Apeon for PowerBuilder allows the entire Web application conversion process to be executed within the PowerBuilder IDE. It does not require the developer to write a single line of HTML, Java, .NET or JavaScript code. Only standard PowerBuilder programming skills are required.

With Apeon for PowerBuilder, enterprises can continue to use PowerBuilder to build Client/Server applications. At the click of a button, the applications can be deployed to the Web. Enterprises can also transform existing Client/Server applications into Web applications. It is no longer a daunting task to develop Web applications. The task can become a familiar and easy routine for optimizing existing PowerBuilder applications or building new PowerBuilder applications.

2.2 System architecture

Apeon for PowerBuilder works with standard n-Tier Web architecture. Each tier serves a specific purpose in the architecture, though it may not necessarily reside in the same physical machine. For example, the Web server, application server and database server can reside in one machine or in different machines. A single tier may also be spread across multiple physical machines. For example, the application server can consist of a cluster of Apeon Server computers to provide load balancing and failover.

Figure 2.1: Apeon for PowerBuilder system architecture



Each tier should have appropriate Appeon components and/or third-party software installed according to its role within the architecture. The following table briefly lists the tiers, their purposes and the required Appeon/third-party software.

Table 2.1: Tiers in the Appeon Web architecture

Tier	Purpose	Appeon Component	Third-party Software
Client	Runs Appeon Web applications	None	The default Microsoft Internet Explorer Web browser
Developer PC	Deploys your PowerBuilder application to the testing and production Web environments with the n-Tier architecture.	Appeon Developer	PowerBuilder Internet Explorer
Web Server	Hosts the presentation layer of the deployed applications, responds to incoming requests from Client PC and dispatches requests to the application server.	Appeon Server Web Component	EAServer HTTP Server or any EAServer-compatible Web server, such as Apache or IIS.
Application Server	Hosts the DataWindows and n-Tier NVOs of the deployed applications, provides necessary runtime services to the deployed application, such as DataWindow retrieval and update, execution of business logic, and security authentication.	Appeon Server	EAServer
Database Server	Hosts the application database.	None	JDBC-compliant RDBMS supported by Appeon. Please see Database server requirements for more information.

2.3 Appeon editions

Appeon Web 6.6 (on EAServer UNIX\LINUX) contains the following editions.

Table 2.2: Appeon editions

Edition	Platform	Component	Description
Enterprise Edition	IBM AIX, Sun Solaris, HP Unix, RedHat Linux	<ul style="list-style-type: none"> • Appeon Server • Appeon Server Web Component • EAServer 	1) Appeon Developer and Appeon Help are not provided. 2) The Appeon Server clustering service is provided in Enterprise Edition only.

Edition	Platform	Component	Description
Workgroup Edition	IBM AIX, Sun Solaris, HP Unix, RedHat Linux	<ul style="list-style-type: none"> • Appeon Server • Appeon Server Web Component • EAServer 	Appeon Developer and Appeon Help are not provided.

2.4 Appeon components

2.4.1 Appeon Developer (Windows only)

Appeon Developer is a plug-in to the PowerBuilder IDE installed to the developer's PC. It provides a set of tools that enable the deployed application generation, maintenance, and upgrades within the PowerBuilder IDE. These tools are accessed via a toolbar in the PowerBuilder IDE, which automatically loads each time PowerBuilder is started.

2.4.2 Appeon Server

Appeon Server is a set of server components (J2EE or .NET) that is deployed to the application server. It provides the deployed applications with necessary run-time services such as data connectivity, DataWindows support, transaction management, and security.

Appeon Server also includes Appeon Enterprise Manager (AEM) and Appeon Server Web Component.

AEM is a Web application used to manage Appeon Server and deployed Web applications over the Internet or intranet. When you install Appeon Server, AEM is automatically installed.

During the Appeon Server installation, the Appeon Server Web Component is automatically installed to the EAServer HTTP server, therefore, if you are using one IIS as both the Web server and the application server, you will NOT need to run the Appeon Server Web Component installation.

2.4.3 Appeon Server Web Component (for third-party Web servers)

Appeon Server Web Component resides in the Web server as the runtime environment supporting a PowerBuilder-style Web graphical user interface within standard Microsoft Web browsers. Appeon Server Web Component is a set of JavaScript, HTML and XML files that enable the rich PowerBuilder-style UI in standard Microsoft Web browsers.

If you use a third-party Web server or physically separate the Web server and the Appeon Server, for example, for load balancing purpose, you will need to install Appeon Server Web Component to the Web server and configure the Web server with the redirector plug-in. For detailed instructions on configuring the Web server, refer to **Web Server Configuration Guide** in Appeon Help.

2.4.4 Appeon Help (Windows only)

Appeon Help provides easy access to all user documents. It saves time and conveniently places the help information, such as, the Appeon supported features, at your fingertips.

3 Installation Requirements

3.1 Client requirements

3.1.1 Software requirements

- Microsoft Internet Explorer 6.0 SP2, 7.0, 8.0, 9.0 or 10.0
- Microsoft Windows 2000 SP4, Windows Server 2003 SP2, Windows XP SP3, Windows Vista SP2, Windows Server 2008 SP2, or Windows 7
- (Optional) Adobe Acrobat Reader 6.0 or above (for viewing printed PDF DataWindows or reports)

3.1.2 Hardware requirements

- Intel processor(s) running at 1.8. GHz or faster
- At least 2 GB RAM

3.2 Appeon Server requirements

3.2.1 Software requirements

- Unix OS (such as IBM AIX, Sun Solaris, or HP Unix), or Linux (such as RedHat Linux) that is supported by Sybase EAServer
- SAP Sybase EAServer 6.3.1.04
Please make sure that EAServer is started by JDK 1.6 or above (not requiring Java Applets or JVM at the client browser).
- SAP Sybase PowerBuilder® Virtual Machine (PBVM) 9.0.3 (build 8784), 10.2.1 (build 9914), 10.5.2 (build 7826), 11.2 (build 8669), 11.5 (build 3127), 12.0 (build 3517), 12.5 (build 2511), or 12.5.2 (build 5006)
If you do not have the required build, update it by running the PowerBuilder EBF setup program, which is available on the Sybase Downloads website.

3.2.2 Hardware requirements

- Processor(s)
Linux: 86 Pentium IV above, X86 AMD above
IBM AIX: IBM Power4
Solaris: UltraSparcIII, Solaris X86 Pentium
HP-Unix: HP Itanium, HP PA-Risc
- At least 2 GB RAM (4 GB RAM recommended)

- 900 MB hard drive space (for EAServer installation) plus 250 MB hard drive space (for Apeon Server installation)
- DVD-ROM drive (for Apeon installation from DVD)

3.2.3 (Optional) Third-party Web Server requirements

- Apache 1.3, 2.0, or 2.2 on Windows or Unix/Linux, or Microsoft IIS 5.0, 6.0, 7.0, 7.5 or 8.0
- 50 MB available hard drive space (for Apeon Server Web Component installation)

To make the third-party Web server work with Apeon Server, you must have the Web server redirector plug-in installed and configured. For detailed instructions, refer to the **Web Server Configuration Guide** in Apeon Help.

3.3 Database server requirements

Apeon Web 6.6 can run with any of the following database servers and drivers:

- SAP Sybase SQL Anywhere 8.0.2, 9.0, 10.0.1, 11.0, or 12.0 with Sybase iAnywhere or jConnect JDBC driver
 - SAP Sybase Adaptive Server Enterprise (ASE) 12.5.x or 15.x with Sybase jConnect or iAnywhere JDBC Driver
 - SAP Sybase Adaptive Server Anywhere WEB Edition with Sybase jConnect or iAnywhere JDBC driver
 - SAP Sybase IQ 12.6.x, 12.7.x or 15 with jConnect JDBC driver
 - SAP HANA 1.00.36 with JDBC Driver
 - IBM DB2 UDB 8.1, 8.2, 9.5 or 10 with IBM JDBC driver
 - Informix 9.x, 10.x or 11 with IBM JDBC driver
 - Microsoft SQL Server 2000 SP4, 2005 SP1, 2008 or 2012 with MSFT JDBC driver or JTDS driver
 - MySQL 5.5.x with Connector/J driver
 - Oracle 8i, 9i, 10g, or 11g with Oracle JDBC Driver
- Note: Verify that the version of the downloaded driver is compatible with the Oracle database in use.
- Teradata 13.00.00.27 or later with Teradata JDBC driver

For instructions on downloading and installing the driver files, refer to the *JDBC driver preparation* section in the *Apeon Server Configuration Guide*.

4 Installing Appeon Web 6.6

4.1 Overview

Appeon Web 6.6 (on EAServer UNIX\LINUX) consists of two components: Appeon Server and Appeon Server Web Component. To deploy the application to Appeon Servers and Web servers running on Unix/Linux, you can use an Appeon Developer installed from an Appeon for PowerBuilder **for Windows** edition.

Table 4.1: Appeon components

Component	Description	Installed on
Appeon Developer	An add-in that provides the Web deployment option to PowerBuilder.	PowerBuilder on Windows operating system.
Appeon Server	A set of EAServer components that provide runtime services for the Appeon Web applications, such as data connectivity, DataWindows support, transaction management, and security. Appeon Server also includes Appeon Enterprise Manager (AEM) and Appeon Server Web Component.	EAServer on Unix/Linux operating system. EAServer can be silently installed with Appeon Server or installed separately before the Appeon Server installation.
Appeon Server Web Component	The runtime environment that supports a PowerBuilder-style Web graphical user interface within standard Microsoft Web browsers. Appeon Server Web Component is a library of JavaScript, HTML and XML files that form the foundation of the/an Appeon Web application.	Third-party Web server. For EAServer HTTP server, this installation is unnecessary since the Web Component is included in Appeon Server.
Appeon Help	The online help of all Appeon user documents which saves time and conveniently places the help information at your fingertips.	Windows operating system.

4.2 Installation scenarios

4.2.1 Overview

Appeon for PowerBuilder works in network architecture: different Appeon components should be installed to the computer(s) according to their roles in the network. In this section, some practical scenarios are described to demonstrate how Appeon should be installed according to network architecture.

4.2.1 Remote Appeon Server using EAServer HTTP server

Table 4.2: Remote Appeon Server installation

Scenarios	Requirements	Appeon Components
In this example, 2 computers are used: Computer 1 serves as Developer PC.	Computer 1: Microsoft Windows 2000, 2003, 2008, 7, XP, or Vista Microsoft Internet Explorer SAP Sybase PowerBuilder SAP Sybase ASA	Computer 1: Appeon Developer
Computer 2 serves as Web server, application server and database server.	Computer 2: Unix/Linux SAP Sybase ASA, SAP Sybase ASE, SAP Sybase IQ, Oracle, Microsoft SQL Server, Informix, IBM DB2, Teradata, MySQL, or SAP HANA depending on the application database	Computer 2: Appeon Server

4.2.2 Remote Appeon Server using a third-party Web server

Table 4.3: Remote Appeon Server installation

Scenarios	Requirements	Appeon Components
In this example, 3 computers are used: Computer 1 serves as Developer PC.	Computer 1: Microsoft Windows 2000, 2003, 2008, 7, XP, or Vista Microsoft Internet Explorer SAP Sybase PowerBuilder SAP Sybase ASA	Computer 1: Appeon Developer
Computer 2 serves as Web server	Computer 2: Microsoft IIS or Apache	Computer 2: Appeon Server Web Component
Computer 3 serves as application server and database server.	Computer 2: Unix/Linux SAP Sybase ASA, SAP Sybase ASE, SAP Sybase IQ, Oracle, Microsoft SQL Server, Informix, IBM DB2, Teradata, MySQL, or SAP HANA depending on the application database	Computer 2: Appeon Server

4.2.3 Appeon Server Cluster

Table 4.4: Appeon Server cluster installation

Scenarios	Requirements	Appeon Components
In this example, N (N \geq 4) computers are used: Computer 1 is used for Developer PC.	Computer 1: Microsoft Windows 2000, 2003, 2008, 7, XP, or Vista Microsoft Internet Explorer SAP Sybase PowerBuilder SAP Sybase ASA	Computer 1: Appeon Developer
Computer 2 is the database server.	Computer 2: SAP Sybase ASA, SAP Sybase ASE, SAP Sybase IQ, Oracle, Microsoft SQL Server, Informix, IBM DB2, Teradata, MySQL, or SAP HANA depending on application database	Computer 2: None
Computer 3 is the Web server.	Computer 3: Microsoft IIS or Apache	Computer 3: Appeon Server Web Component
Computers 4 to n are a group of EAServers.	Computers 4 to n: Unix/Linux	Computers 4 to n: Appeon Server (After installing Appeon Server to each EAServer, configure the Appeon Servers as a cluster. Refer to Configuring Appeon Server Cluster for details).

4.3 Two installation methods

Appeon Web 6.6 provides two installation methods: **new installation** and **upgrade installation**.

- If your computer has not installed any version of Appeon for PowerBuilder, the installation program automatically takes the new installation method.
- If your computer has Appeon 5.x or an earlier version installed, you must uninstall the version, prepare the environment for Appeon Web 6.6 installation, and then use the installation program to install. The installation program takes the new installation method.
- If your computer has Appeon 6.0, 6.1, 6.2 or 6.5 installed, the installation program automatically takes the upgrade installation method.

4.4 Appeon Web 6.6 new installation

4.4.1 Appeon Server installation

4.4.1.1 Prerequisites

- Verify that PBVM 9, 10, 11, 11.5, 12.0, or 12.5 is installed before installing Appeon Server. Make sure the libpbvm90x.so, libpbvm100x.so, libpbvm110x.so, libpbvm115x.so, or libpbvm120x.so file is in the \$JAGUAR/lib folder. If it is not available or libpbvm80x.so appears instead, upgrade by running PowerBuilder EBF, available from the Sybase Downloads website (<http://downloads.sybase.com/swd/summary.do>).
- Verify that the Sybase license server (SYSAM) that you intend to use with the Appeon Server does not include the EJB (Enterprise Java Beans) option. If ASE EJB license is present, EAServer will start as "Sybase Enterprise Application Server (ASE Edition)" which only supports EJB components. Other component types, including PowerBuilder, are not supported. PowerBuilder support is required for the Appeon Server to function properly. For instructions on how to check and remove the ASE EJB option, refer to the **Appeon Troubleshooting Guide**.
- Before beginning the installation process, make sure that you shut down Sybase EAServer, Sybase ASA, Sybase EP Management Agent service and any other programs that are running.
- If you do not have EAServer 6.3 installed on your computer and plan to install it by Appeon installation program, copy the Appeon installation program to the computer where EAServer and Appeon Server will be installed, because the network installation is not allowed.
- When you copy the Appeon installation program to the computer, make sure that the directory does not contain special characters or spaces.

4.4.1.2 Installation instructions

To install Appeon Server on the Unix/Linux platform, you will go through the same installation process as that used for the Windows platform. The only difference is, with the Unix/Linux platform, you will complete the installation process in command line mode, instead of using graphical user interfaces.

Step 1: Open the **Appeon4EAS** folder from the Appeon installation program.

Step 2: Run the **install.sh** file using the command below:

```
./install.sh
```

Note: File names and directory names are case sensitive.

Step 3: Specify the temporary folder for the installation files extracted by the install.sh file. Press Enter or input "Next" to proceed.

```
Please input the directory where you want to extract the temporary install files.  
if the directory does not exist, it will be created for you.
```

```
Please input the directory OR [Exit]>
```


Notes:

1. You must have Write permission to the input directory.
2. The hard drive must have at least 200 MB space for installing Appeon Server, and 1 GB space for installing Appeon Server and EAServer.

The welcome message is displayed, which indicates that the installation process has started. Follow the step-by-step prompts to install Appeon Server.

Step 4: Press Enter or input "Next" to proceed.

```
Step 1. Welcome

#####

Welcome to Appeon Server 2013 for EAServer 6.x installation!

IMPORTANT NOTE BEFORE STARTING (If you have previously installed EAServer):

1. Ensure Web Administration Console is not running.
2. Ensure EAServer is not running.

#####

Press Enter to start the installation [Exit][Next]>
```

You can also input "n", "N", "next" or "Next" to indicate "Next", "p", "P", "previous", or "Previous" to indicate "Previous", and "e", "E", "exit" or "Exit" to indicate "Exit". Notice that the input is case sensitive.

Step 5: Enter the Product Key that is shipped with the product.

```
Step 2. Product Key

#####

The format of the product key provided by Appeon should be XXXX-XXXX
-XXXX-XXXX-XXXX-XXXX. All characters should be capitalized.

#####

Please input the product key or [Exit][Previous]>
```

Step 6: Specify an existing EAServer where Appeon Server will be installed.

```
Step 3. Choose to install EAServer or not

#####

Please choose to install EAServer 6.3 or not

#####

> 1| Yes, I want to install EAServer 6.3 now
2| No, I want to use an existing EAServer 6.3

Please select a number to continue OR [Exit][Previous][Next]>
```

- You cannot input "1" and press Enter to install EAServer 6.3 now on the local machine, as the EAServer installation program was not packaged in this setup program.

- Input "2" and press Enter to use an existing EAServer which has been installed on the computer.

Step 7: If you input "2" in Step 6, the installation program will prompt you to specify the full path of an existing EAServer 6.x where Apeon Server will be installed.

```
Step 4. EAServer Path

#####

Please choose a directory to install Apeon Server.
You must specify the EAServer directory for installing Apeon Server.
You can use the default EAServer directory or specify another EAServer
directory for the Apeon Server installation.

#####

> 1| Use the default directory [/opt/sybase/EAServer6]
2| Specify another directory for installing Apeon Server.

Please select a number to continue OR [Exit][Previous][Next]>
```

- Input "1" to use the directory (/opt/Sybase/EAServer6) where by default EAServer is normally installed.
- Input "2" to manually specify the directory if EAServer is installed to a directory different from the default directory, for example, /export/home/appeon/Sybase/EAServer.

The Setup program will check whether EAServer has been correctly installed to the specified directory and whether you have "Write" privileges.

Step 8: Specify the logon user name and password for Apeon Enterprise Manager (AEM).

```
Step 5. AEM Login Settings

#####

Please specify the Login Username and Password for AEM Console.
The default Login Username and Password are both set to "admin".

#####

1 Login Username: admin
2 Login Password: ****

Please select the number to modify the Username or Password.
Or leave the default Username and Password and go to Next Step.

Please select a number to continue OR [Exit][Previous][Next]>
```

- Press Enter if you want to use the default user name and password "admin" for AEM, or
- Input "1" to modify the default user name and input "2" to modify the default password.

Step 9: Confirm the setup settings.

```

Step 6. Confirm Information

#####

Confirm the installation

The product key is XXXX-XXXX-XXXX-XXXX-XXXX-XXXX-XXXX
EAServer Directory: /opt/Sybase/EAServer6
AEM Console:
  Username: admin
  Password: *****

The installer will start installing the files on your system.
Go back if you want to change any settings for the installation.

#####

Please select an option to continue[Exit][Previous][Next]>

```

Press Enter to begin copying the required files or input "p" or "Previous" to modify the setup settings.

If you have selected to install EAServer, the setup program will first install EAServer to the specified location then install Appeon Server. The whole EAServer installation process may take up to twenty minutes.

During the Appeon Server installation, the Appeon Server Web Component is automatically installed to the EAServer HTTP server, the Appeon Enterprise Manager (AEM) is installed as a Web application to EAServer, and the Appeon Server Status Monitor is installed to the \$JAGUAR/appeon/bin folder. Note that the Status Monitor will become effective only after it is configured properly. For detailed instructions on using and configuring the Status Monitor, refer to the Appeon Server Status Monitor section in the Appeon Server Configuration Guide.

Step 10: Once the installation is complete, choose whether to start Appeon Server.

```

#####

Congratulations! The installation has been successfully completed.

#####

Start Appeon Server
-----

Do you want to start the Appeon Server now? [Yes|No]>

```

To start Appeon Server immediately input "y". To start it later input "n". If EAServer is just installed with Appeon Server, you might want to replace the EAServer license file first before starting and using Appeon Server. In this case, you can input "n", and then manually start Appeon Server later. Refer to [Starting/Stopping Appeon Server](#) for how to manually start Appeon Server using commands.

4.4.1.3 Installing EAServer license

Copy the EAServer license file and replace the one under the \$JAGUAR/licenses folder. EAServer license file is provided by Sybase Inc. after you purchase Appeon Server and EAServer. For detailed instructions, please refer to the EAServer installation guide in the EAServer 6.3 Sybooks CD or <http://sybooks.sybase.com/nav/base.do>.

4.4.2 Appeon Server Web Component installation (for third-party Web servers only)

If you use a third-party Web server or set up an individual machine (separate from the application server) as the Web server, you will need to install the Appeon Server Web Component. If not, you do not need to run the installation of the Appeon Server Web Component separately since it is included in Appeon Server.

4.4.2.1 Prerequisites

- Install a third-party Web server that is compatible with the Sybase redirector plug-in. For a list of compatible third-party Web servers, refer to [\(Optional\) Third-party Web server requirements](#).
- Stop the Web server, the Sybase EP Management Agent service, and any other Windows programs before beginning the installation process.

4.4.2.1.1 Prerequisites if Web Component installed to multiple third-party Web servers

Appeon Server Web Component can be installed to multiple third-party Web servers. Make sure all third-party Web servers meet the above requirements and repeat the installation steps for the Appeon Server Web Component on each Web server.

4.4.2.2 Installation instructions

There is no Setup program for installing Appeon Server Web Component on Unix/Linux. You can directly copy the Appeon Server Web Component source files to the Web server Web root on Unix/Linux.

Step 1: Locate the **AppeonWebComponent.tar** file in the **AppeonWebComponent** folder on the Appeon installation program.

Step 2: Uncompress the **AppeonWebComponent.tar** file into the Web root of the Web server. For example, the Web root of Apache 1.3 is \$Apache/htdocs.

4.4.2.2.1 Installing and configuring the Web server redirector plug-in

To ensure the third-party Web server works with Appeon Server, install and configure the corresponding redirector plug-in for the Web server. Instructions for installing and configuring the redirector plug-in are provided in the **Web Server Configuration Guide** in Appeon Help.

4.5 Appeon Web 6.6 upgrade installation

4.5.1 Overview

You can upgrade to Appeon Web 6.6 from Appeon 6.0, 6.1, 6.2 or 6.5, but you cannot upgrade from Appeon 5.x or an earlier version. If you are using Appeon 5.x or an earlier version, uninstall it and then install Appeon Web 6.6.

Note that Web applications deployed with Appeon 6.0, 6.1, 6.2 or 6.5 and the demo applications must be redeployed with Appeon Web 6.6 after the upgrade.

4.5.1 Upgrading Appeon Server

4.5.1.1 Prerequisites

- Before beginning the upgrade process, make sure that you shut down Sybase EAServer, Sybase ASA, Sybase EP Management Agent service and any other programs that are running.
- If you do not have EAServer 6.3 installed on your computer and plan to install it by Appeon installation program, copy the Appeon installation program to the computer where EAServer and Appeon Server will be installed, because the network installation is not allowed.
- When you copy the Appeon installation program to the computer, make sure that the directory does not contain special characters or spaces.

4.5.1.2 Upgrade instructions

To upgrade Appeon Server on the Unix/Linux platform, you will go through the same upgrade installation process as that used for the Windows platform. The only difference is, with the Unix/Linux platform, you will complete the installation process in command line mode, instead of using graphical user interfaces.

Step 1: Open the **Appeon4EAS** folder from the Appeon installation program.

Step 2: Run the **upgrade.sh** file using the command below:

```
./upgrade.sh
```

Note: File names and directory names are case sensitive.

Step 3: Specify the temporary folder for the installation files extracted by the upgrade.sh file. Press **Enter** or input **Next** to proceed.

```
Please input the directory where you want to extract the temporary install files.  
if the directory does not exist, it will be created for you.
```

```
Please input the directory OR [Exit]>
```

Notes:

1. You must have Write permission to the input directory.
2. The hard drive must have at least 200 MB space for installing Appeon Server, and 1 GB space for installing Appeon Server and EAServer.

The welcome message is displayed, which indicates that the upgrade installation process has started. Follow the step-by-step prompts to install Appeon Server.

Step 4: Press Enter or input **Next** to proceed.

```

Step 1. Welcome

#####

Welcome to Appeon Server 2013 Upgrade for EAServer 6.x!

IMPORTANT NOTE BEFORE STARTING:

1. Ensure Web Administration Console is not running.
2. Ensure EAServer is not running.

#####

Press Enter to start the installation [Exit][Next]>

```

You can also input **n**, **N**, **next** or **Next** to indicate **Next**, **p**, **P**, **previous**, or **Previous** to indicate **Previous**, and **e**, **E**, **exit** or **Exit** to indicate **Exit**. Notice that the input is case sensitive.

Step 5: Input the location of JDK 1.6 or above if the upgrade installation procedure detects that the JAVA_HOME variable does not exist.

```

Step 2. Check JAVA_HOME

#####

System cannot find variable JAVA_HOME, which is necessary for this upgrade.

Please input the directory where the JDK 1.6 or above is located or [Exit]>

```

Step 6: Enter the Product Key that is shipped with the product.

```

Step 3. Product Key

#####

The format of the product key provided by Appeon should be XXXX-XXXX
-XXXX-XXXX-XXXX-XXXX. All characters should be capitalized.

#####

Please input the product key or [Exit][Previous]>

```

Step 7: Input the path of Appeon Server which you want to upgrade, for example, /home/export/sybase/EAServer5 or /home/export/Sybase/EAServer63. Press Enter. The upgrade installation procedure will automatically check whether the path you input is valid.

```

Step 4. EAServer and Appeon Server Path

#####

Please input the directory of EAServer 6.x with old Appeon Server installed
(e.g. ../sybase/EAServer63) or [Exit][Previous]

#####

```

Step 8: Confirm the setup settings.

```

Step 5. Confirm Information

#####

Confirm the installation

The product key: XXXX-XXXX-XXXX-XXXX-XXXX-XXXX-XXXX
JAVA_HOME:      /home/export/sybase/EAServer63/Shared/jdk1.5.0_12
EAServer 6.x and Apeon Server Directory: /home/export/Sybase/EAServer63

The installer will start installing the files on your system.
Go back if you want to change any settings for the installation.

#####

Please select an option to continue[Exit][Previous][Next]>

```

Press Enter to begin copying the required files or input "p" or "Previous" to modify the setup settings.

Step 9: Once the upgrade installation is complete, choose whether to start Apeon Server.

```

#####

Congratulations! The upgrade has been successfully completed.

#####

Start Apeon Server

-----

Do you want to start the Apeon Server now? [Yes|No]>

```

To start Apeon Server immediately input **y**. To start it later input **n**. If EAServer is just installed with Apeon Server, you might want to replace the EAServer license file first before starting and using Apeon Server. In this case, you can input "n", and then manually start Apeon Server later. Refer to [Starting/Stopping Apeon Server](#) for how to manually start Apeon Server using commands.

Note that the configuration files of the Apeon Server that you want to upgrade are backed up in the `/${JAGUAR}/apeon_backup` directory, you can check or store them on the server.

4.5.2 Upgrading Apeon Server Web Component

4.5.2.1 Prerequisites

- Stop the Web server, the Sybase EP Management Agent service, and any other Windows programs before beginning the installation process.
- If Apeon Server Web Component is installed to multiple third-party Web servers, repeat the upgrade steps for the Apeon Server Web Component on each Web server.

4.5.2.2 Upgrade instructions

There is no Setup program for installing Apeon Server Web Component on Unix/Linux. You can directly copy the Apeon Server Web Component source files to the Web server Web root on Unix/Linux.

Step 1: Locate the **AppeonWebComponent.tar** file in the **AppeonWebComponent** folder on the Appeon installation program.

Step 2: Uncompress the **AppeonWebComponent.tar** file into the Web root of the Web server. For example, the Web root of Apache 1.3 is \$Apache/htdocs.

4.6 Starting/Stopping Appeon Server

- Starting Appeon Server:

Navigate to the \$JAGUAR/appeon/bin/ folder and run the appeonserverstart.sh file using the following command:

```
./appeonserverstart.sh
```

- Stopping Appeon Server:

Shutting down EAServer will also shut down Appeon Server. EAServer can be shut down by using EAServer Web console (after connecting to the server to be shut down), or by killing the process ID that is running the serverstart.sh or java command.

5 Configuring Appeon Server Cluster

Appeon provides its own tools and plug-ins to configure an Appeon Server cluster and implement the load balancing and failover functionalities. An Appeon Server cluster is essentially a group of EAServers, each with Appeon Server and Appeon plug-in installed.

Following are high level steps for configuring an Appeon Server cluster. For detailed instructions, please refer to **Tutorial 5: Configure Appeon Server Cluster** in *Appeon Mobile Tutorial*.

1. Install **Appeon Server** to multiple EAServers.
2. Create **Appeon Server cluster** in AEM.
3. Configure the **Web server** for the Appeon Server cluster.
4. Deploy the application to the Appeon Server cluster and Web server(s).

6 Post-Installation Configuration Tasks

6.1 Overview

The previous chapters provide instructions on how to set up Apeon system architecture, including installing Apeon for PowerBuilder components, as well as configuring Apeon Server cluster. Once the Apeon system is set up and before you start deploying applications, the post-installation configuration tasks listed in the following table will help ensure that the deployed applications run as desired. Post-installation configuration tasks refer to configurations required for Apeon system architecture that affect the running of all applications but do not include configuration tasks performed in Apeon Developer and Apeon Enterprise Manager for specific applications.

Table 6.1: Post-installation tasks

Task	Description	Detailed Instructions Given in...
Configuration for the client machine	The IE security settings and Windows login user privileges may prevent downloading the Apeon Xcelerator plug-in.	Configuration for client machine
System language setting	Configuration required for the client, Apeon Server and database server. The operating system language settings can affect the characters that are displayed in the deployed application.	System language settings
Database JDBC driver preparation	Configuration required for Apeon Server. You should copy the corresponding driver files for the database server in use to the EAServer installation folder in the machine hosting Apeon Server.	JDBC driver preparation in the Apeon Server Configuration Guide
Configuration for supporting DataWindow Data Cache feature	Configuration required for database server and Web server. The DataWindow Data Cache feature can cache DataWindow data that are frequently used on the Web server to improve runtime performance, but will not work until you fulfill the configuration requirements for database server(s) and Web server(s). This feature is not available for Web servers running Unix/Linux.	DataWindow Data Cache in the Apeon Server Configuration Guide
Configuration for supporting dynamic DataWindows	Configuration required for database server. Configuration at the database server is required for support of dynamic DataWindows.	Dynamic DataWindow in the Apeon Features Help

Task	Description	Detailed Instructions Given in...
Configuration for fixing an ASE issue	Apeon provides several SQL files for you modifying the chain modes of stored procedures in ASE database to avoid the following error: "Select error: Stored procedure... may be run only in unchained transaction mode"	ASE Chained mode issue in the Apeon Troubleshooting Guide

6.2 Configuration for client machine

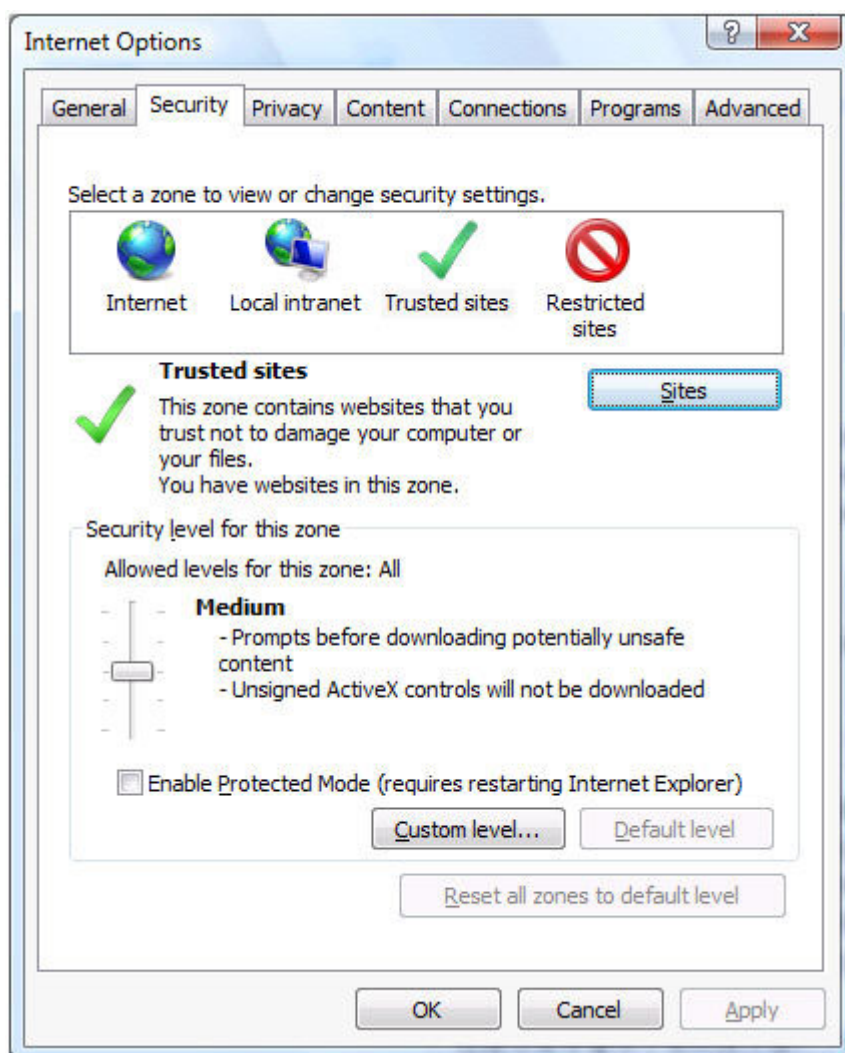
Running the deployed application on the client machine is dependent on the Apeon Xcelerator plug-in (ActiveX controls). To ensure (only for the first time) the Apeon ActiveX controls can be downloaded and installed, the following configuration on the client machine is required.

6.2.1 Configuring IE security settings

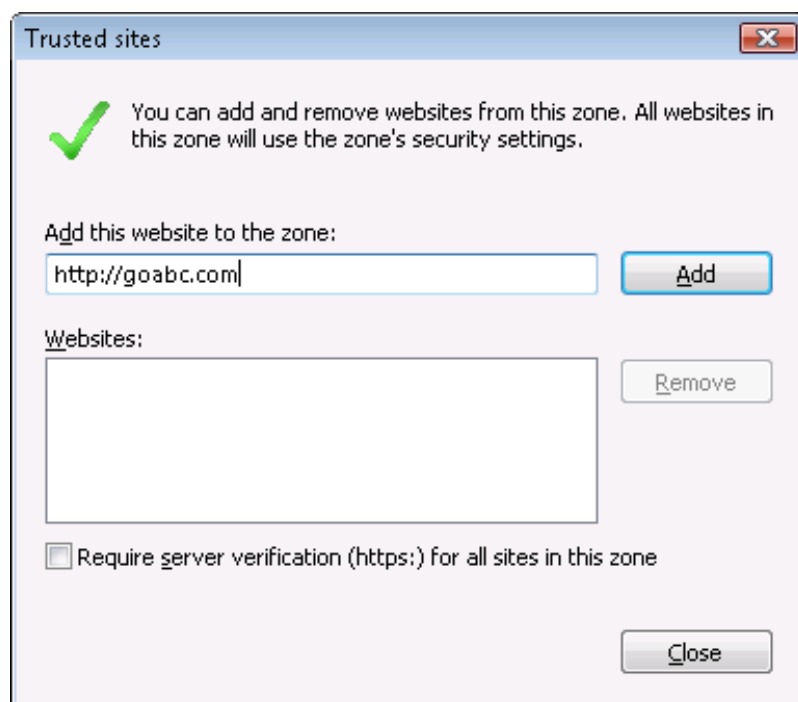
We recommend you add the URL of the deployed application to the **Trusted Sites** zone in Internet Explorer, because the default security settings of this zone are appropriate for downloading and installing the Apeon ActiveX controls. However, if you do not want to add the URL to the Trusted Sites zone, you will need to make sure the security settings (listed in Step 4 below) are enabled for the appropriate zone. The following are detailed steps to add the URL to the Trusted Sites zone.

Step 1: In Internet Explorer, on the **Tools** menu, click **Internet Options**.

Step 2: In the Internet Options window, select the **Security** tab. Then select the **Trusted sites** Web content zone, and click the **Sites** button.

Figure 6.1: IE security settings

Step 3: In the Trusted sites window, input the URL of the Web application to the "Add this website to the zone" box. Uncheck the checkbox of "Require server verification (https:) for all sites in this zone". Click **Add** then click **Close** to return to the Internet Options window.

Figure 6.2: Trusted sites

Step 4: If you do not want to add the URL to the trusted sites, you will need to select the appropriate zone, then click the **Custom Level** button, and enable the following settings (they are enabled for the trusted sites by default):

- Download signed ActiveX controls
- Run ActiveX controls and plug-Ins
- Script ActiveX controls marked safe for scripting
- Active scripting

Step 5: Click **OK** to save the settings and close IE.

6.2.2 Logging in as administrator or normal user

Different Internet Explorer versions require different user privileges for installing the ActiveX control.

- If using IE 8.0, 9.0 or 10 on Windows Vista/7/2008, you do not need administrative privileges to download and register the ActiveX control; you can log into the machine as a normal user.
- If using IE 8.0, 9.0 or 10 on Windows XP/2003, or if using IE 7.0 or earlier, you must log in as a member of the Administrator group so you have the permissions to download and register the ActiveX control successfully.

Please read the appropriate section for the IE version you are using.

A useful tip: In very rare cases, even after making the required configurations, you still get errors such as "Apeon Xcelerator plug-in cannot be loaded" or "Internet Explorer cannot open the Internet site http://<Web site>. Operation aborted.", you can try this to resolve the error: right click the **Internet Explorer** icon on desktop, choose **Run as administrator**; after the Web application runs successfully, restart IE in the normal way.

6.2.2.1 Using IE 8.0, 9.0 or 10

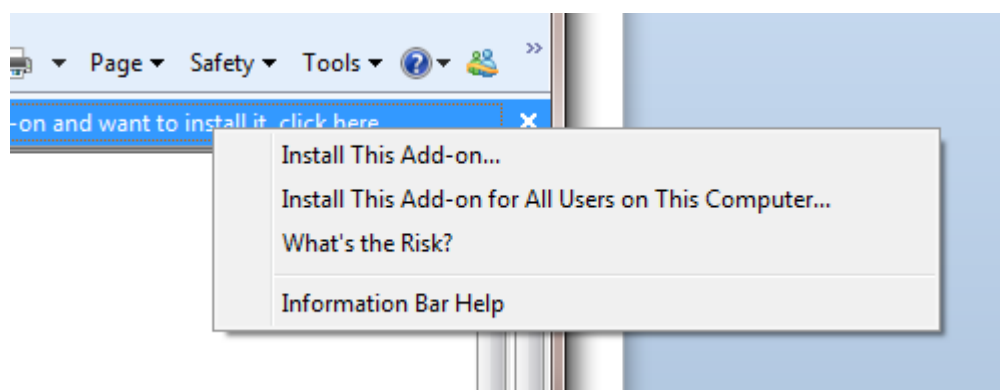
- If you are using IE 8.0, 9.0 or 10 on Windows Vista/7/2008, follow the prompts in IE information bar to install the ActiveX control, no matter which user account (administrator or normal user) you use.
- If you are using IE 8.0, 9.0 or 10 on Windows XP/2003, first log in as an Administrator group member, then follow the prompts in IE information bar to install the ActiveX control, then log off and log in again as a normal user.

The following are detailed steps to install the ActiveX control from the IE information bar:

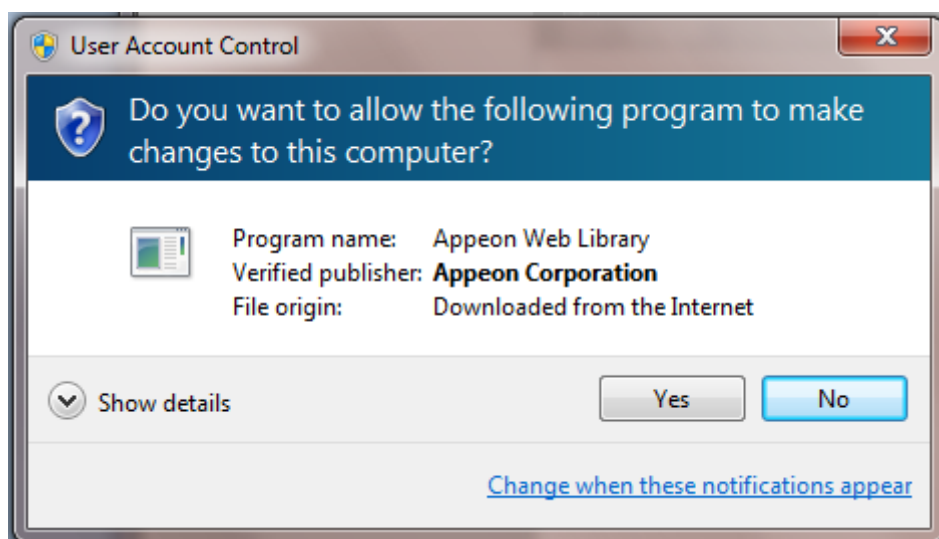
Step 1: Click the IE information bar, the yellow message bar at the top, that says, "This website wants to install the following add-on: 'Apeon Web Library' from 'Apeon Corporation'. If you trust the website and the add-on and want to install it, click here...".

Step 2: Select "Install This Add-on for All Users on This Computer...". This will complete the installation of the first Apeon ActiveX control. (Note: you will need to do this step one more time, as there are two Apeon ActiveX controls to install.)

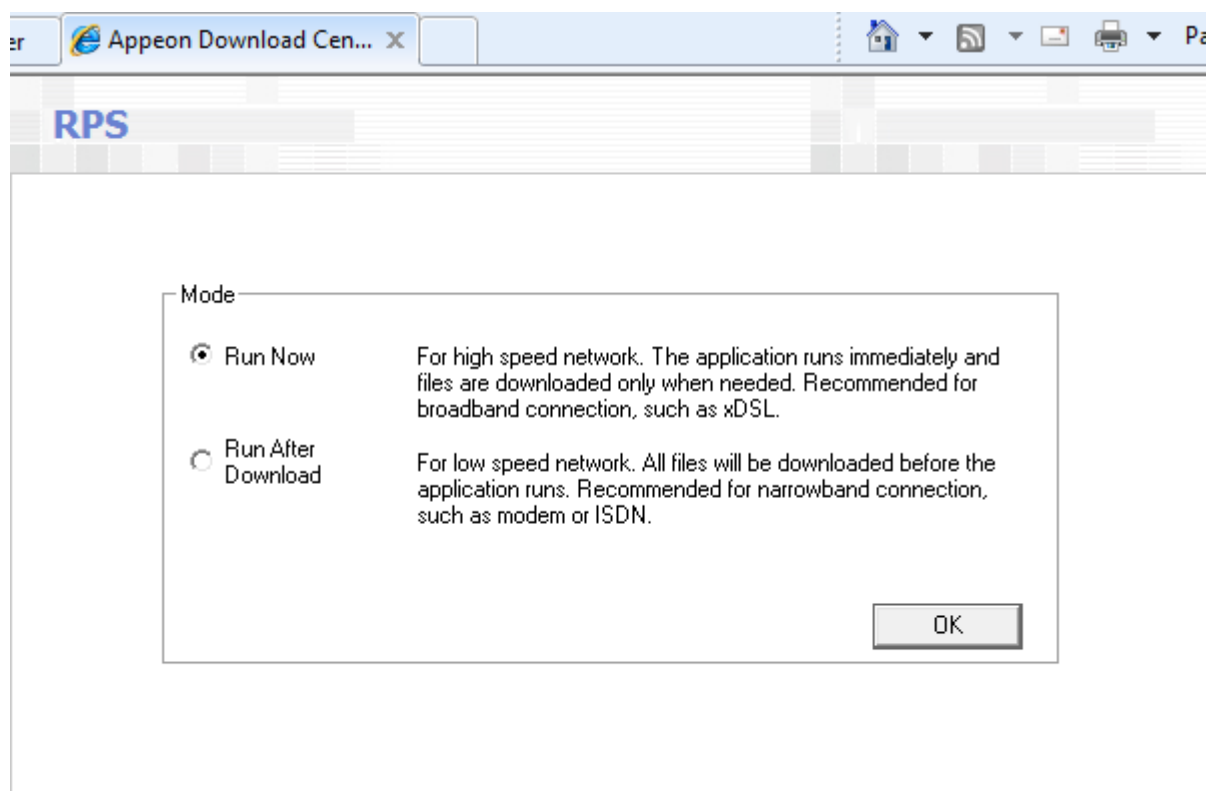
Figure 6.3: IE information bar



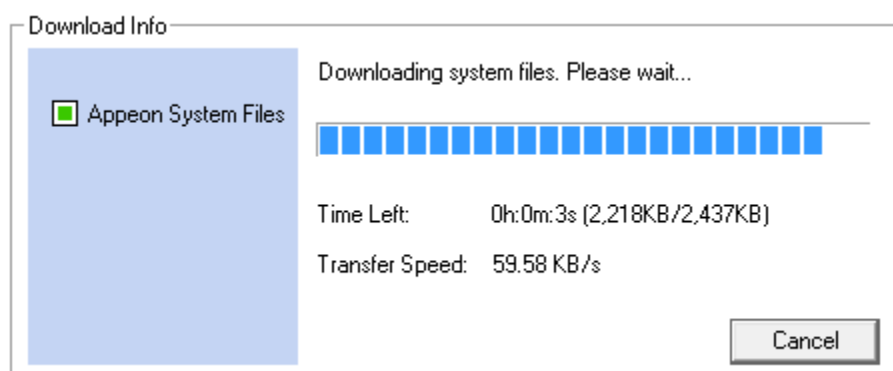
Step 3: Click **Yes** if Windows display the following "User Account Control" screen confirming that you want to install the component.

Figure 6.4: UAC window

The installation will proceed and when it is successful, the following web page will be displayed.

Figure 6.5: Appeon download center

Step 4: Click the **OK** button and the system will begin the download process.

Figure 6.6: Download file

Step 5: After this process is complete, you will see the "Apeon Xcelerator plug-in cannot be loaded" screen again. Click the IE information bar and select "Install This Add-on for All Users on This Computer..." one more time (this will install the second plug-in). This time you will see a spiraling wait icon and at the bottom left side on the status bar, you will see several program files being loaded. Once this process is completed, the application is ready to be used.

6.2.2.2 Using IE 7.0 (or earlier)

If you are using IE 7.0 or earlier, you need to first log in as an Administrator group member, then follow the prompts in IE information bar to install the ActiveX control, then log off and log in again as a normal user.

For Windows Vista, 2008, or 7, if UAC is on, when you follow the prompts in the IE information bar to install the ActiveX control, a window as below may appear, you need to input the administrator password and click **OK**; then the ActiveX control will be installed successfully.

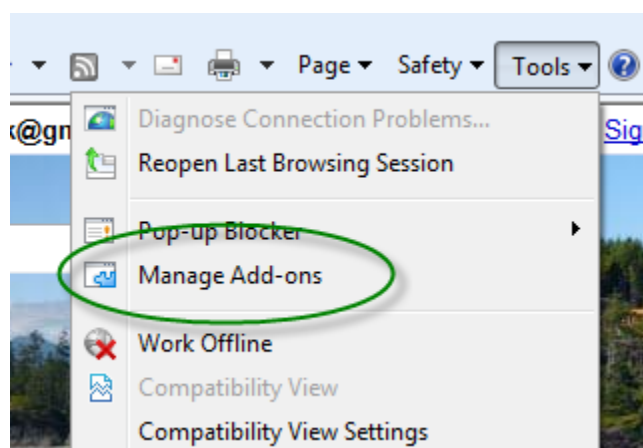
Figure 6.7: User Account Control

If you are using IE 7, make sure IE is not started in "No-Add-ons" mode, as IE browser started in this mode will not be able to run the Apeon ActiveX control. In this case, exit IE and restart it in normal mode.

6.2.3 Verifying Apeon ActiveX control installation

We recommend you verify the installation of Apeon ActiveX controls, especially after you upgrade Internet Explorer or Apeon for PowerBuilder. The following are detailed steps.

Step 1: In Internet Explorer, on the **Tools** menu, click **Manage Add-ons**.

Figure 6.8: Manage add-ons

Step 2: From the list of add-ons, there are two listed for Apeon Corporation: EonDownloadCenter Class and EonUISpace Class. Make sure their status are Enabled.

Figure 6.9: Verify ActiveX control status

Name	Publisher	Status	File date	Version	Load t
Adobe PDF Link Helper	Adobe Systems, Incorpo...	Enabled	02/27/2009 12:07 P...	9.1.0.163	0.03 s
Adobe PDF Reader	Adobe Systems, Incorpo...	Enabled	02/27/2009 12:07 P...		
Apeon Corporation					
EonDownloadCenter Class	Apeon Corporation	Enabled	07/01/2010 9:16 PM	6.5.106.0	
EonUISpace Class	Apeon Corporation	Enabled	07/01/2010 9:17 PM	6.5.0106.0	
Apple Inc.					
QuickTime Object	Apple Inc.	Enabled	09/09/2010 4:01 PM	QuickTime...	
Control name is not available					
Web Test Recorder	Control name is not avai...	Enabled		4.0.31106.0	

6.3 System language settings

Sometimes the operating system language settings can affect the characters displayed in the deployed application. To avoid any such display issues, verify that:

- The language of the data in the database used by the application matches the operating system language settings on the machine where Apeon Server is installed.
- The language of the data in the database used by the application matches the Windows language settings on each Client machine where the Web application will be viewed.
- The language of the data in the database used by the Apeon-deployed Web application matches Windows language settings on the machine where Apeon Developer is installed.

To set the language settings in Windows operating system:

Step 1: Open Windows **Start** Menu and select **Settings | Control Panel**.

Step 2: Double-click **Regional Options**.

Step 3: Select the appropriate language from the **Your locale** DropDownListBox.

Step 4: Click the **Set Default** button. The Select System Local window displays.

Step 5: Select the appropriate locale. Verify that it is the same as that selected in the **Your locale** list box in Regional Options.

Step 6: Click **OK** to return to the Regional Options window.

Step 7: Verify that the language selected in the **Your locale** list box and the language checked as default in **Language settings for the system** settings are the same. The language can be from different regions as long as it is the same language.

Step 8: Click **Apply** and **OK** in the Regional Options window to accept the settings.

To set the language settings in Unix/Linux operating system:

Step 1: Change to the etc/default folder and edit the init file.

Step 2: Set the value of the LANG command to the appropriate language. You can use command "locale -a" to view the locale languages supported by the operating system.

7 Uninstalling Appeon Web 6.6

7.1 Overview

To uninstall Appeon for PowerBuilder, uninstall each of its components separately. The uninstall process reverses the actions performed by the Appeon installation program. Uninstallation does not delete any user created files in Appeon, such as Web files generated while deploying the demo applications or your own application to Appeon Server. Delete these files manually from the Web root.

Do not try to reverse installation steps or uninstall Appeon by deleting files manually or changing your Registry. This can create serious problems with your system in general and new Appeon releases in particular.

7.2 Uninstalling Appeon Server

Step 1: Shut down all running programs including Sybase EAServer, Sybase EP Management Service, and Sybase ASA database.

Step 2: Change to \$JAGUAR/appeon/_uninstall folder and run the uninstall program using the following command:

```
./uninstall.sh
```

Step 3: Input "y" to confirm the removal of Appeon Server.

Step 4: Choose whether to uninstall EAServer 6.3. This prompt displays only if EAServer 6.3 was installed silently during Appeon Server installation.

Step 5: Confirm the removal of Appeon Server. Click **OK** to uninstall.

Appeon recommends that you preserve EAServer 6.3 for later Appeon installation. Input "n" to retain EAServer 6.3 and begin uninstalling Appeon Server only. When Appeon Server is uninstalled, the Appeon Server Web Component that was installed during the Appeon Server installation is also uninstalled. However, some files created by Appeon Server after the installation may still exist in the EAServer and sybcent41 folder. You can remove these files manually.

If you selected to uninstall EAServer 6.3, EAServer will be uninstalled after the Appeon Server uninstall process is completed.

7.2.1 Uninstalling EAServer 6.3 that is installed with Appeon Server

EAServer can be silently installed with Appeon Server or installed separately before Appeon Server. If you installed EAServer by running the independent setup program (before the Appeon Server installation), uninstall it by running the EAServer uninstall program. For detailed instructions, refer to the **EAServer Installation Guide**. If you install EAServer silently with Appeon Server, you can do either of the following to uninstall EAServer:

- Uninstall EAServer with the Appeon Server uninstall program.

When uninstalling Appeon Server, you can choose whether to uninstall EAServer 6.3 which is installed with Appeon Server. For detailed instructions, refer to [Uninstalling Appeon Server](#).

- Uninstall EAServer separately, after Appeon Server uninstall.

If you choose not to uninstall EAServer 6.3 with Appeon Server during the Appeon Server uninstall, you can still uninstall it by running the **EASuninstall.sh** file or **SilentUninstall_Unix.sh** file in the \$JAGUAR/_uninstall folder, where \$JAGUAR indicates the EAServer directory.

After EAServer is successfully uninstalled, some user created files might be left in the EAServer folder. You can manually remove these files.

7.3 Uninstalling Appeon Server Web Component (for third-party Web servers only)

To uninstall Appeon Server Web Component on Unix/Linux, you directly go to the Web root of the Web server and remove the entire "appeon" folder.

7.3.1 Uninstalling Web Component if multiple third-party Web servers are involved

Repeat the Web Component uninstall steps for each third-party Web server.

Index

A

- Appeon components, [6](#)
 - Appeon Developer, [6](#)
 - Appeon Help, [6](#)
 - Appeon Server, [6](#)
 - Appeon Server Web Component, [6](#)
- Appeon Developer, [6](#)
- Appeon editions, [5](#)
- Appeon Help, [6](#)
- Appeon Server, [6](#)
- Appeon Server cluster, [11](#)
- Appeon Server installation
 - install EAServer license, [15](#)
 - installation instructions, [12](#)
 - prerequisites, [12](#)
- Appeon Server requirements, [7](#)
 - hardware requirements, [7](#)
 - software requirements, [7](#)
 - Web Server requirements, [8](#)
- Appeon Server Web Component, [6](#)
- Appeon Server Web Component installation, [16](#)
 - installation instruction, [16](#)
 - prerequisites, [16](#)

C

- Client requirements, [7](#)
 - hardware requirements, [7](#)
 - software requirements, [7](#)
- configuration for client machine, [23](#)
- configure Appeon Server cluster, [21](#)
- configure IE security settings, [23](#)

D

- database server requirements, [8](#)

H

- hardware requirements, [7, 7](#)

I

- install EAServer license, [15](#)
- installation instructions, [12, 16](#)
- installation scenarios, [9](#)
 - Appeon Server cluster, [11](#)
 - remote Appeon Server using a third-party Web server, [10](#)

- remote Appeon Server using EAServer HTTP server, [10](#)

L

- log in as administrator or normal user, [25](#)

P

- prerequisites, [12, 16](#)

R

- remote Appeon Server using a third-party Web server, [10](#)
- remote Appeon Server using EAServer HTTP server, [10](#)

S

- software requirements, [7, 7](#)
- start and stop Appeon Server, [20](#)
- system architecture, [4](#)
- system language settings, [30](#)

U

- uninstall Appeon Server, [32](#)
- uninstall Appeon Server Web Component, [33](#)
- upgrade Appeon Server, [17](#)
- upgrade Appeon Server Web Component, [19](#)

W

- Web Server requirements, [8](#)