

Appeon Performance Tuning Guide

Appeon® for PowerBuilder® 2013
FOR WINDOWS & UNIX & LINUX

DOCUMENT ID: DC10089-01-0651-01

LAST REVISED: May 15, 2013

Copyright © 2000-2013 by Appeon Corporation. All rights reserved.

This publication pertains to Appeon software and to any subsequent release until otherwise indicated in new editions or technical notes. Information in this document is subject to change without notice. The software described herein is furnished under a license agreement, and it may be used or copied only in accordance with the terms of that agreement.

No part of this publication may be reproduced, transmitted, or translated in any form or by any means, electronic, mechanical, manual, optical, or otherwise, without the prior written permission of Appeon Corporation.

Appeon, the Appeon logo, Appeon Developer, Appeon Enterprise Manager, AEM, Appeon Server and Appeon Server Web Component are registered trademarks of Appeon Corporation.

Sybase, Adaptive Server Anywhere, Adaptive Server Enterprise, iAnywhere, PowerBuilder, Sybase Central, and Sybase jConnect for JDBC are trademarks or registered trademarks of Sybase, Inc.

Java and JDBC are trademarks or registered trademarks of Sun Microsystems, Inc.

All other company and product names used herein may be trademarks or registered trademarks of their respective companies.

Use, duplication, or disclosure by the government is subject to the restrictions set forth in subparagraph (c)(1)(ii) of DFARS 52.227-7013 for the DOD and as set forth in FAR 52.227-19(a)-(d) for civilian agencies.

Appeon Corporation, 1/F, Shell Industrial Building, 12 Lee Chung Street, Chai Wan District, Hong Kong.

Contents

1	About This Book	1
1.1	Audience	1
1.2	How to use this book	1
1.3	Related documents	1
1.4	If you need help	3
2	Appeon Performance	4
2.1	Expected performance level	4
2.2	Automatic performance boosting	4
2.3	Impact of the Internet and slow networks	5
2.4	Impact of #heavy# client-side logic	6
2.5	Impact of large data transmission	7
3	Performance-Related Settings	9
3.1	Overview	9
3.2	Appeon Developer performance settings	9
3.3	Appeon Enterprise Manager performance settings	10
3.3.1	Timeout settings	10
3.3.2	DataWindow data caching	11
3.3.3	Multi-thread download settings	11
3.3.4	Custom Libraries download settings	11
3.3.5	Log file settings	12
3.4	Internet Explorer performance settings	12
3.5	Web and application server performance settings	12
3.5.1	SAP Sybase EAServer	12
3.5.1.1	JVM startup option	12
3.5.1.2	Configuring data sources	12
3.5.1.3	HTTP properties	13
3.5.2	Microsoft IIS server	13
3.5.2.1	Recommendations for avoiding common errors on IIS	13
3.5.2.2	Advanced thread settings	14
3.6	Database performance settings	17
3.6.1	Recommended database driver	17
3.6.2	Recommended database setting	17
4	Identifying Performance Bottlenecks	19
4.1	Overview	19
4.2	Appeon Performance Analyzer	19
4.2.1	Getting Started	19
4.2.1.1	Enabling Appeon Performance Analyzer	19
4.2.1.2	Starting Appeon Performance Analyzer	20
4.2.1.3	Getting to know Appeon Performance Analyzer	22
4.2.1.4	Removing Appeon Performance Analyzer	22
4.2.2	Working with Appeon Performance Analyzer	23
4.2.2.1	System Configuration	23
4.2.2.2	Calls Analysis	24
4.2.2.3	Download Analysis	28
4.2.2.4	View Detail	29
4.2.2.5	Additional Functions	36

4.3 Testing Appeon Web applications with LoadRunner	46
4.3.1 LoadRunner	46
4.3.2 General Limitations on Performance Testing	46
4.3.3 Testing Environment	47
4.3.4 Testing Steps	47
4.3.4.1 Configuring AEM	47
4.3.4.2 Data Preparation (for update only)	47
4.3.4.3 Preparing Test Cases	48
4.3.4.4 Recording Scripts	48
4.3.4.5 Modifying Scripts	54
4.3.4.6 Playing back Script to test the correctness of scripts	58
4.3.4.7 Setting Scenarios	58
4.3.4.8 Running Scenarios	59
4.3.5 Appendix	59
4.3.5.1 Modifying the scripts of NVO	59
4.3.5.2 Modifying the scripts of EJB/JavaBean	60
4.3.5.3 Troubleshooting	60
4.4 Analyzing log files	67
4.4.1 Analyzing Windows application log files	67
4.4.2 Analyzing Appeon Server log files	68
4.4.3 Analyzing active transaction log	69
4.5 Identifying Performance Bottlenecks of Web Server and Application Server	70
4.6 Identifying Performance Bottlenecks of DB Server	70
4.6.1 Deadlock analysis	70
4.7 Identifying Performance Bottlenecks of PB application	71
4.7.1 Analyzing performance bottlenecks of PB application	71
5 Tuning: DB Server	72
5.1 Database	72
6 Tuning: Excessive Server Calls	73
6.1 Overview	73
6.2 Technique #1: partitioning transactions via stored procedures	73
6.3 Technique #2: partitioning non-visual logic via NVOs	75
6.4 Technique #3: eliminating recursive Embedded SQL	77
6.5 Technique #4: grouping multiple server calls with Appeon Labels	78
7 Tuning: Heavy Client	84
7.1 Overview	84
7.2 Technique #1: thin-out #heavy# Windows	84
7.3 Technique #2: thin-out #heavy# UI logic	84
7.3.1 Manipulating the UI in loops	84
7.3.2 Triggering events repeatedly	85
7.3.3 Performing single repetitive tasks	85
7.3.4 Initializing #heavy# tabs	86
7.3.5 Using ShareData or RowsCopy/RowsMove for data synchronization	86
7.3.6 Using computed fields	86
7.3.7 Using DataWindow expressions	87
7.3.8 Using complex filters	87

7.3.9 Using RowsFocusChanging/RowsFocusChanged events	87
7.4 Technique #3: offload #heavy# non-visual logic	87
8 Tuning: Large Data Transmissions	88
8.1 Overview	88
8.2 Technique #1: retrieving data incrementally	88
8.2.1 For Oracle database server	88
8.2.2 For all other database servers	89
8.3 Technique #2: minimizing excessive number of columns	89
9 Conclusion	90
Index	91

1 About This Book

1.1 Audience

This book is intended to help developers plan what steps they will take, and how much time they will invest in improving the performance of a PowerBuilder application deployed to the Web/Mobile with Apeon for PowerBuilder. It is also intended to guide PowerBuilder architects and developers on how to build new PowerBuilder applications that perform well when deployed to the Web, a WAN or the Mobile.

1.2 How to use this book

There are eight chapters in this book.

Chapter 1: About This Book

A general description of this book.

Chapter 2: Apeon Performance

Describes current runtime performance levels of Apeon for PowerBuilder and primary reasons for performance issues (if any).

Chapter 3: Identifying Performance Bottlenecks

Describes approach for identifying areas in the Web application that may suffer from runtime performance issues. Also, describes the Apeon Developer performance reporting tool - the Apeon Performance Analyzer tool.

Chapter 4: Performance-Related Settings

Documents key Apeon, Web browser, application server, and database settings that should be configured from default values to ensure optimal performance of your Web/Mobile system.

Chapter 5: Tuning: Excessive Server Calls

Introduces the performance tuning concept "Excessive Server Calls" with several techniques to optimize your PowerBuilder code to achieve good performance.

Chapter 6: Tuning: Heavy Client

Introduces the performance tuning concept "Heavy Client" with several techniques to optimize your PowerBuilder code to achieve good performance.

Chapter 7: Tuning: Large Data Transmissions

Introduces the performance tuning concept "Large Data Transmissions" with several techniques to optimize your PowerBuilder code to achieve good performance.

Chapter 8: Conclusion

Final thoughts and recommendations on performance tuning of your PowerBuilder applications for the Web/Mobile.

1.3 Related documents

Apeon provides the following user documents to assist you in understanding Apeon for PowerBuilder and its capabilities:

- **Introduction to Appeon:**
Guides you through all the documents included in Appeon for PowerBuilder.
- **New Features Guide:**
Introduces new features and changes in Appeon for PowerBuilder.
- **Appeon Mobile Tutorials:**
Gives instructions on deploying, running, and debugging Appeon applications, distributing native mobile apps, and configuring Appeon server clusters.
- **Appeon Installation Guide:**
Provides instructions on how to install Appeon for PowerBuilder successfully.
- **Development Guidelines for Appeon Mobile:**
Introduces general guidelines on developing apps with Appeon Mobile.
- **Migration Guidelines for Appeon Web:**
A process-oriented guide that illustrates the complete diagram of the Appeon Web migration procedure and various topics related to steps in the procedure, and includes a tutorial that walks the user through the entire process of deploying a small PowerBuilder application to the Web.
- **Features Help for Appeon:**
Provides a detailed list of supported PowerBuilder features which can be converted to the Web/Mobile with Appeon as well as which features are unsupported.
- **Appeon Developer User Guide:**
Provides instructions on how to use the Appeon Developer toolbar in Appeon for PowerBuilder.
- **Workarounds & API Guide:**
Provides resolutions for issues, such as unsupported features, etc., encountered when using Appeon for PowerBuilder.
- **Appeon Workspace User Guide:**
Gives a general introduction on Appeon Workspace and provides detailed instructions on how to use the app.
- **Appeon Server Configuration Guide:**
Provides instructions on how to configure Appeon Server Monitor, establish connections between Appeon Servers and database servers, and configure AEM for maintaining Appeon Server and Appeon deployed applications.
- **Web Server Configuration Guide:**
Describes configuration instructions for Web Servers to work with a single Appeon Server or an Appeon Server cluster.

- **Troubleshooting:**
Provides information on troubleshooting issues; covering topics, such as product installation, application deployment, AEM, and Appeon application runtime issues.
- **Appeon Performance Tuning Guide:**
Provides instructions on how to modify a PowerBuilder application to achieve better performance from its corresponding Web/mobile application.
- **Testing Appeon Web Applications with QTP:**
Provides instructions on how to test Appeon Web applications with QTP.

1.4 If you need help

If you have any questions about this product or need assistance during the installation process, access the Technical Support Web site at <http://www.appeon.com/support>.

2 Appeon Performance

2.1 Expected performance level

When comparing a PowerBuilder application to the performance of a Web application deployed by Appeon to a LAN environment, generally speaking the performance of the two will be quite similar. In some cases (for certain operations) Appeon may actually be even faster than PowerBuilder.

The reason is that Appeon has been tuned for nearly a decade to offer the best performance possible for real-life PowerBuilder applications:

- Large PowerBuilder applications up to 600MB (of PBLs) including several thousand DataWindows and thousands of Windows.
- Complex screens containing as much as 80 DataWindows in a single Window
- Complex tabs (including nested tabs and dynamically created tabs)
- Dynamically created objects (DataWindows, UserObjects, etc.)
- PFC and other high-overhead frameworks similar to PFC.

2.2 Automatic performance boosting

Appeon has a number of features built into its infrastructure/framework to instantly or automatically boost the performance of PowerBuilder applications when deployed to the Web. Many of these features are always on and transparently working in the background to boost performance. Other features are user-selectable and must be configured. The following table is list of these features and the configuration of these features is covered in [Chapter 3, Performance-Related Settings](#).

Table 2.1: Appeon Performance Boosting Features

Performance Feature	Description	Location
Just-in-Time Downloading	As the application is run and various windows are opened, only the Web files required for that particular window are downloaded at that point in time. Once the Web files are downloaded, they are cached in the Internet Explorer temporary files folder and are not downloaded again.	Appeon Infrastructure
10X Web File Compression	All JavaScript files are compressed by as much as 10X, then the compressed version of the file is downloaded over HTTP to the Web browser.	Appeon Developer
10X Data File Compression	For each DataWindow or DataStore retrieval, the result set is first retrieved by the application server, automatically compressed by 10 times in most cases, and then downloaded over HTTP to the Web browser.	Appeon Infrastructure

Performance Feature	Description	Location
	Utilizing AJAX technology, only the DataWindow or DataStore is refreshed and the rest of the screen remains intact.	
DataWindow Data Caching	For each DataWindow or DataStore, the developer has the option of enabling caching of the result set. Appeon enables caching at the application server, Web server, and Web browser so every tier of the Web architecture is benefiting from the best performance and scalability possible.	Appeon Enterprise Manager
Merge files	Merges multiple JavaScript files into a single file to reduce the number of HTTP requests and corresponding overhead.	Appeon Developer
Multi-thread Downloading	Downloads are multi-threaded to boost the application runtime performance.	Appeon Enterprise Manager
Custom Libraries Downloading	Any custom libraries can be automatically downloaded and installed with your Web application, or if the libraries are very large in size, you can disable this feature and distribute the libraries some other fashion.	Appeon Enterprise Manager
Database Connection Pooling	By deploying to a true n-tier Web environment with Appeon, you can take advantage of Database Connection Pooling, a feature of most application servers. Connection Pooling does exactly that, it establishes a pool of connections to your database, which is shared among your clients. So rather than each client having its own dedicated connection to the database, a fewer number of connections can be rotated among all the users. For large deployments with thousands of clients this can boost database scalability noticeably.	Appeon Infrastructure

2.3 Impact of the Internet and slow networks

Although Appeon pushes the envelope to deliver unparalleled performance from standard Web technologies (e.g. XML, JavaScript, HTML, Java or C#), which are typically significantly slower than PowerBuilder, slow and latent network connections rob performance from even the best applications!

Network chatter and network-intensive code really highlight the weakness of a poor network connection. Any code that results in a HTTP request (i.e. server call) when executed multiple times sequentially has potential to create network chatter. There are mainly two categories of code that result in server calls - data access related and remote method invocations. Here are several common examples so you can familiarize yourself:

- Embedded SQL (Select, Insert, Delete, Update, Cursor) including Dynamic SQL;

- Invoking stored procedures or database functions;
- DataWindow/DataStore Functions (Retrieve, Update, ReselectRow, GetFullState, SetFullState, GetChanges, SetChanges);
- DataWindow/DataStore Events (SQLPreview);
- Invoking a method of a server-side object, such as a PowerBuilder NVO, Java EJB, or .NET Component; or
- Invoking a Web Service.

Each of the above statements will generate one call to the server utilizing HTTP, with exception of SQLPreview event that will generate one call for each line of code handled by the event. If any of the above statements are contained in a loop or recursive function, well depending on the number of loops, even though its just one statement it would be executed multiple times generating multiple server calls. Needless to say, loops and recursive functions are some of the most dangerous from a performance perspective.

The reason it is important to minimize server calls is because it can take 100 or even 1,000 times longer to transmit one packet of data over the Internet compared to a LAN. Imagine an event handler is triggered, for example handling an "onClick" event, whose execution will result in 80 synchronous server calls over a LAN with latency of 2 milliseconds (ms). In such scenario the slow-down attributed to network latency would be 0.16 seconds (80 x 2 ms). Now imagine this same event handler running over a WAN with latency of 300 ms. The slow-down attributed to the network latency would be a whopping 24 seconds (80 x 300 ms)! And depending on the amount of data transmitted there could be additional slow-down due the bandwidth bottlenecks.

It is imperative for the developer to be conscious that PowerBuilder applications deployed to the Web may not be running in a LAN environment, and as such there will be some degree of performance degradation. How much depends on how the code is written, but in most cases the performance degradation still falls within acceptable limits without much performance optimization.

Should you find that certain operations in your application are unacceptably slow, the good news is there are numerous things that you can do as PowerBuilder developers to ensure your PowerBuilder applications perform well in a WAN environment (e.g. Internet) or on slower networks. At a high-level, your code needs to be written such that the server calls and other performance intensive code is minimized or relocated to the middle-tier or back-end. This will be covered in more detail in the following chapters. Some changes are actually quite simple while others may require increased effort. Nonetheless, in all cases optimizing the performance of your applications in PowerBuilder is just a fraction of the effort to work with typical low-productivity Web tools such as VisualStudio.NET and Eclipse.

2.4 Impact of #heavy# client-side logic

Most PowerBuilder applications are developed utilizing a 2-tier architecture. In other words, all the PowerScript and embedded SQLs are coded in the Visual objects, for example Window, CommandButton, etc. In contrast, a 3-tier architecture would encapsulate all non-visual logic in PowerBuilder NVOs (Non-Visual Objects). The reality is even if your

application utilizes NVOs, chances are it is not a pure 3-tier application if PowerBuilder NVOs are not exclusively utilized to encapsulate all non-visual logic. But don't rush to partition your application just yet!

Most applications developed as a 2-tier architecture perform great in Apeon. In fact, there are many situations that a 2-tier application when deployed by Apeon will actually perform faster than a 3-tier application. The reason is if a PowerBuilder NVO is deployed to the middle-tier or application server, time must be spent to call the server and get the results back to the client. Of course, your non-visual logic running on an application server will run faster than at the Web browser. The key question is how much performance do you gain by running a particular block of code on the application server vs. how much performance do you lose due to the server calls.

As a rule of thumb, it is recommended to partition your non-visual logic to the middle-tier only when the particular block of code runs unacceptably slow at the Web browser. In such cases, it is likely that the application performance will benefit, and as such, it is worthwhile to invest the time to partition such logic. However, if the non-visual logic is only slightly sluggish, it may be possible to optimize the code without having to partition it to the application server.

2.5 Impact of large data transmission

When you first open a Window there are two types of files downloaded. The first type is the HTML and JavaScript files ("Web files") that contain the UI and UI logic of the application Window. The second type is data files that contain the result set, for example for a DataWindow retrieve. The time to download these files is affected by two factors: 1) the network connection and 2) the size of the files to be downloaded.

The Web files do not impact performance because of their small size and the enhanced ability of the browser to "cache" them. The Web files for a given PowerBuilder Window are typically between 25-75 KB. Because these Web files are static in nature, once a given application Window has been opened, the Web files will be cached on the Client computer. As such, once these Web files are cached, their impact on performance is essentially non-existent.

Under most circumstances, these Web files are not re-downloaded when the Window is reopened. The only exceptions are if 1) the temporary Internet files folder has been emptied or 2) the application has been updated and redeployed to the server. If the latter has happened, Web files for only those Windows that have been modified will be automatically downloaded from the Web server.

Only the data files containing the result sets may or may not be cached (depending on whether you have enabled DataWindow caching). A result set of 50 records would typically result in a 12 KB data file. Every 5 records would typically add another 1.2 KB to the data file size. So, for example, a 500-record result set would typically correspond to a 120 KB data file. If DataWindow caching is not enabled, the data files corresponding with such DataWindows will be downloaded from the server each time a DataWindow retrieve is invoked.

The good news is that Apeon has built-in 10X data compression for DataWindow result set to essentially eliminate the time spent downloading these data files. The same 500-record result set that would normally correspond to a 120 KB data file would only result in the

download of a 12 KB data file from the server. This compression feature makes even the largest of result sets quick to transfer.

In conclusion, due to Web file caching feature of the Web browser, Apeon's built-in DataWindow caching technology and 10X data compression technology, generally speaking neither the Web files nor data files should have any noticeable impact on the performance of your Web application.

3 Performance-Related Settings

3.1 Overview

Performance settings need to be configured in Apeon Developer, Apeon Enterprise Manager, Web browser and your application server to ensure good performance in a production environment. If you identify any performance bottlenecks, it is strongly recommended that you first ensure all performance-related settings are correctly configured. Only if the performance issues still persist after the performance settings are configured correctly, then it is recommended to consider optimizing your PowerBuilder code.

3.2 Apeon Developer performance settings

The following table lists the Apeon performance settings that the developer can configure (in the application profile) of Apeon Developer to boost performance. To make a performance setting effective for an application, enable the option in the application profile and then perform a "Full Deployment" of the application.

Table 3.1: Performance settings in Apeon Developer

Performance Feature	Description	User-Selectable
10X Web File Compression	Compresses files when they are transferred over the network.	User must enable this feature for it to become effective.
Merge files	Merges the small files during the application deployment. The small files will be downloaded to the client in one file package at one call, instead of being downloaded one by one at separate calls.	User must enable this feature for it to become effective.
Performance Analyzer compliance	Enables the application to be deployed in a method compliant with the Performance Analyzer tool. The application deployed with this option can run with the Performance Analyzer tool at runtime to diagnose the performance issues. For more about the Performance Analyzer tool, see Apeon Performance Analyzer . Note: as the data is not encrypted during transmission at runtime, therefore, this option is recommended to use only at the test or development stage.	User must enable this feature for it to become effective.
Download ActiveX files in a single thread	Downloads the two ActiveX files in the same thread at runtime. Using the same thread to download the two ActiveX files can speed up the download under particular network conditions.	User must enable this feature for it to become effective.

3.3 Appeon Enterprise Manager performance settings

3.3.1 Timeout settings

By setting proper values for Timeout Detection Interval and Timeout Settings in AEM, Appeon Server can release the timeout and invalid database connections in time, thus can avoid database deadlock or malfunctions, so that the concurrent processing ability and the running stability of Appeon Server for .NET can be greatly enhanced.

3.3.1.1 Session Timeout Detection Interval

The Session Timeout Detection Interval setting is to specify the interval (in seconds) to check whether sessions have timed out.

It is recommended that the value is smaller than the Session Timeout value. The default value is 30 seconds. The value recommended by the system is based on your Session Timeout values, if the Session Timeout values are different from applications, the system will multiply the smallest value with 0.15 to get the recommended value.

3.3.1.2 Transaction Timeout Detection Interval

The Transaction Timeout Detection Interval setting is to specify the interval (in seconds) to check whether transactions have timed out.

It is recommended that the value is smaller than the Transaction Timeout value. The default value is 30 seconds. The value recommended by the system is based on your Transaction Timeout values, if the Transaction Timeout values are different from applications, the system will multiply the smallest value with 0.15 to get the recommended value.

3.3.1.3 Session timeout

Session timeout ends the user session and rolls back all database updates since the last commit for a user session. The default value is 3600 seconds. Session Timeout should be larger than the Transaction Timeout setting. Generally speaking, Session Timeout should not be smaller than 3600 seconds.

3.3.1.4 Transaction timeout

Transaction timeout rolls back all database updates since the last commit in a transaction. The default value is 120 seconds. Transaction Timeout should be less than Session Timeout.

If transaction timeout in the application database is set to 1800 seconds, then Transaction Timeout in AEM should be set to 1810 or larger.

If transaction timeout in the application database is not set, then Transaction Timeout in AEM should be set to a number greater than the maximum time needed to execute regular database operations for the Web application, suppose the most time-consuming table query operation takes 3600 seconds to complete, then Transaction Timeout should be set to 3610 or larger.

3.3.1.5 Rollback Completion time

Specifies the maximum time (in seconds) to complete a rollback of a transaction. If the time to roll back transaction exceeds the specified value, the transaction rollback will be terminated. The default value is 3 seconds.

It is recommended that it is set to a number between 3 seconds and Transaction Timeout *0.1.

3.3.1.6 Maximum Rollback Retries

The maximum times to retry a rollback of a transaction. Appeon Server executes a rollback if a transaction times out. If the rollback fails, Appeon Server will keep retrying until this maximum value is reached. Setting this value to 0 will disable this feature. The default value is 3.

It is recommended that it is set to a number smaller than 10.

3.3.2 DataWindow data caching

Appeon Enterprise Manager (AEM) provides a DataWindow data cache mechanism for caching the frequently used DataWindow data. It is recommended that you enable the cache for the DataWindow objects whose data is relatively static. Any DataWindow objects whose data is fairly dynamic should remain unchecked, otherwise you will experience overhead from the caching mechanism without the true benefits of the caching.

NOTE: DataWindow Data Cache will not be effective until you fulfill all the configuration requirements that are detailed in the *DataWindow Data Cache* Section, in the *Appeon Server Configuration Guide*. Also, this feature is only supported on Windows servers.

3.3.3 Multi-thread download settings

Multi-thread downloads boost the application runtime performance. However, if there are many threads competing for the processing power of Web server, it may slow down the performance of Web server. Therefore, you should not specify an unnecessarily large number of threads in AEM. It may take some trial and error to fine-tune the performance.

3.3.4 Custom Libraries download settings

If your application utilizes a customer library (e.g. DLL, OCX, etc.), you can specify in AEM how the custom library should be downloaded to the client:

- In most situations you should set the install mode to "Install automatically without asking user" or "Confirm with user, then install automatically". With these options, the custom libraries will be automatically downloaded and seamlessly installed to the Web browser.
- However, if the file size of the custom libraries is extremely large (e.g. tens of megabytes), you should set the install mode to "Install manually (no automatic installation)". With this option, Appeon does not automatically download and install the custom libraries. As such, you must distribute the custom libraries to users and your users need to install it manually.

For more details about the custom libraries download settings, refer to the *Modifying Custom Libraries Install Settings* Section in the *Appeon Server Configuration Guide*.

3.3.5 Log file settings

Once your application is fully tested and ready to move to a production environment, it is recommended to disable the AEM log functionality. Writing log files incurs disk activity, which can impact performance. Generally, the impact is small but nonetheless it will not hurt to disable this.

3.4 Internet Explorer performance settings

For optimal performance, it is recommended that the Web file caching functionality of Internet Explorer be fully utilized. This will significantly reduce the time required to load and start an application following the initial load. The configuration outlined below will ensure that you realize the best performance while safeguarding your application from becoming "stale".

STEP 1: Open Internet Explorer and select Tools | Internet Options. Verify that the *Empty Temporary Internet Files folder when browser is closed* option is not checked under the *Security* section of the *Advanced tab* of Internet Options.

STEP 2: Click the *Settings* button under the *General* tab to configure the Temporary Internet Files settings.

STEP 3: Select the *Automatically* radio button and verify that the Amount of disk space to use scroll box is set to a reasonable number, such as 200 MB or more.

Now the browser is set to automatically check for newer versions of the Web application.

3.5 Web and application server performance settings

3.5.1 SAP Sybase EAServer

The core processing of your Web application happens on the application server. As such, the better EAServer performs the better your Web application will perform. This section highlights several key performance settings you should definitely consider. You may refer to the *EAServer Performance and Tuning Guide* for details on how to extensively tune EAServer.

3.5.1.1 JVM startup option

When starting EAServer, the `-jvmtype` switch specifies whether the client, server, or classic Java VM be used. It is recommended that you set the switch to the J2EE server VM.

3.5.1.2 Configuring data sources

3.5.1.2.1 JDBC driver used by EAServer data source

You should avoid using any JDBC-ODBC driver. Instead, use the Native-protocol/all-Java driver. The only exception is SAP Sybase ASA, which provides the iAnywhere JDBC driver that actually performs remarkably well. For detailed information on configuring JDBC drivers refer to the *JDBC driver preparation* Section in the *Apeon Server Configuration Guide*.

3.5.1.2.2 Configuring the cache size

By default, EAServer is configured to establish 10 database connections. For applications with many several hundred or several thousands of users, this number is often too small. If not increased, it will hurt the performance of your application since your users will be waiting in a queue for an available database connection. On the other hand, if your Web deployment is few hundred users or less, you should not specify an unnecessarily large number as it will consume more server resources and possibly negatively affect performance.

The maximum pool size property, "com.sybase.jaguar.conncache.poolsize.max", defines the maximum number of connections to be held in the connection pool. The size property is generally set to 10%-20% of the maximum number of concurrent users. However, it is possible to use the FORCE option when connecting to obtain additional connections outside of the pool if none are available. Refer to the *EAServer Performance and Tuning Guide* for details on tuning the cache size.

3.5.1.3 HTTP properties

You should configure the EAServer http.maxthreads and server.maxconnections properties such that it can handle the expected concurrent user load for the Web Server. If these properties are improperly configured, it may result in poor performance and possibly result in failed HTTP requests. The httpstat.dat file keeps track of cumulative hits on http objects.

Set the http.maxthreads property to the estimated average number of concurrent HTTP requests (including Servlets and any other server pages). For example, if it is expected that there will be 100 concurrent requests, set the http.maxthreads slightly higher (for example, 120). This will give you a margin of safety. Similarly, set the server.maxconnections to accommodate the average number of concurrent IOP requests that are expected.

Another property you should pay attention to is server.maxthreads. Set this property to equal the combined value of http.maxthreads and server.maxconnections, and add 50 as a margin of safety ($\text{http.maxthreads} + \text{server.maxconnections} + 50$). However, if you are using an older version of PowerBuilder components with a bind thread set, you should increase this number as outlined in the *EAServer Performance Tuning Techniques* document.

Since each application and environment is unique, these are starting points that need to be monitored and adjusted for optimal results. Load and stress testing your application will help you to identify any issues prior to moving your Web application to a production environment.

3.5.2 Microsoft IIS server

Tune the IIS server will help you to avoid some common errors and gain a better performance of Web applications. This section highlights the key performance settings of IIS. You can refer to the IIS Operation Guide for details on how to extensively tune IIS server.

3.5.2.1 Recommendations for avoiding common errors on IIS

IIS should be tuned to avoid the contention, poor performance, and deadlocks for the Web applications. Following are some samples of commons error that you may find in Application log, System log or even log in the Web browser.

- Event Type: Error
Event Source: ASP.NET

Event ID: 1003

Description: aspnet_wp.exe (PID: <xxx>) was recycled because it was suspected to be in a deadlocked state. It did not send any responses for pending requests in the last 180 seconds.

- Event Type: Warning

Event Source: W3SVC-WP

Event ID: 2262

Description: ISAPI 'C:\Windows\Microsoft.net\Framework\v.2.0.50727\aspnet_isapi.dll' reported itself as unhealthy for the following reason: 'Deadlock detected'.

- Event Type: Warning

Event Source: W3SVC

Event ID: 1013

Description: A process serving application pool 'DefaultAppPool' exceeded time limits during shut down. The process id was '<xxxx>'.

- You may receive the exception error message: "System.InvalidOperationException: There were not enough free threads in the ThreadPool object to complete the operation."
- In the browser, you may also receive the exception error message: "Request timed out".

To avoid such problems, you can configure ASP.NET according to the suggestions below so to best fit your situation and make the Web application perform better. Details on how to configure the ASP.NET can be found at [Advanced thread settings](#).

1. Limit the number of .NET requests that can execute at the same time to approximately 12 per CPU.
2. Permit Web service callbacks to freely use threads in the ThreadPool.
3. Select an appropriate value for the [maxconnections](#) parameter. Base your selection on the number of IP addresses and AppDomains that are used.

3.5.2.2 Advanced thread settings

The following settings are the most-Apeon-related settings in ASP.NET.

When you call an Apeon web application from IIS, you may experience contention, poor performance, and deadlocks. Clients may report that requests stop responding (or "hang") or take a very long time to execute.

This problem might occur because ASP.NET limits the number of worker threads and completion port threads that a call can use to execute requests. If there are not sufficient threads available, the request is queued until sufficient threads are free to make the request. Therefore, .Net will not execute more than following number of requests at the same time:

$(\text{maxWorkerThreads} * \text{number of CPUs}) - \text{minFreeThreads}$

Note: The `minFreeThreads` parameter and the `minLocalRequestFreeThreads` parameter are not implicitly multiplied by the number of CPUs.

3.5.2.2.1 `maxWorkerThreads` and `maxIoThreads`

.NET uses the following two configuration settings to limit the maximum number of worker threads and completion threads that are used:

```
<processModel maxWorkerThreads="20" maxIoThreads="20" />
```

The `maxWorkerThreads` parameter and the `maxIoThreads` parameter are implicitly multiplied by the number of CPUs, the default value of these two parameters are both 20. If for some reason your application is slow, perhaps waiting for external resources, you could try to increase the number of threads to a value less than 100. For example, if you have two processors, the maximum number of worker threads is the following: $2 * \text{maxWorkerThreads}$

3.5.2.2.2 `minWorkerThreads`

The setting determines how many worker threads may be made available immediately to service a remote request. By default, the `minWorkerThreads` parameter is not present in either the `Web.config` file or the `Machine.config` file at `C:\WINDOWS\Microsoft.NET\Framework\v2.0.50727\CONFIG`. You need to manually add the following line to make the setting work.

```
<processModel minWorkerThreads="1" />
```

Threads that are controlled by this setting can be created at a much faster rate than worker threads that are created in other ways. The default value for the `minWorkerThreads` parameter is 1. The setting is recommended to set in the following way.

$\text{minWorkerThreads} = \text{maxWorkerThreads} / 2$

Note: This setting is implicitly multiplied by the number of CPUs.

3.5.2.2.3 `minFreeThreads` and `minLocalRequestFreeThreads`

The two settings determine how many worker threads and completion port threads must be available to start a remote request or a local request:

```
<httpRuntime minFreeThreads="8" minLocalRequestFreeThreads="8" />
```

The default value is 8. If there are not sufficient threads available, the request is queued until sufficient threads are free to make the request. Therefore, .NET will not execute more than the following number of requests at the same time:

$(\text{maxWorkerThreads} * \text{number of CPUs}) - \text{minFreeThreads}$

Note: The `minFreeThreads` parameter and the `minLocalRequestFreeThreads` parameter are not implicitly multiplied by the number of CPUs.

3.5.2.2.4 `maxconnection`

The `maxconnection` parameter determines how many connections can be made to a specific IP address. The parameter appears as follows:

```
<connectionManagement>  
  <add address="*" maxconnection="2" />  
  <add address="65.53.32.230" maxconnection="12" />  
</connectionManagement>
```

The `maxconnection` parameter setting applies to the `AppDomain` level. By default, because this setting applies to the `AppDomain` level, you can create a maximum of two connections to a specific IP address from each `AppDomain` in your process.

3.5.2.2.5 execution Timeout

The setting limits the request execution time:

```
<httpRuntime executionTimeout="90" />
```

The default is 110 seconds.

Note: If you increase the value of the `executionTimeout` parameter, you may also have to modify the `processModel responseDeadlockInterval` parameter setting.

3.5.2.2.6 Recommended thread settings

For most applications, you can use and apply the recommended changes in the `Machine.config` file as below, which can be found at `C:\WINDOWS\Microsoft.NET\Framework\v2.0.*****\CONFIG:`

1. Set the values of the `maxWorkerThreads` parameter and the `maxIoThreads` parameter to 100.
2. Set the value of the `maxconnection` parameter to $12*N$ (N is the number of CPUs that you have).
3. Set the values of the `minFreeThreads` parameter to $22*N$ and the `minLocalRequestFreeThreads` parameter to $19*N$.
4. Set the value of `minWorkerThreads` to 50. Remember, `minWorkerThreads` is not in the configuration file by default. You must add it.

If you have hyperthreading enabled, you must use the number of logical CPUs instead of the number of physical CPUs.

Note: If you have a server with one processor, when you use this configuration, you can execute a maximum of 78 .NET requests at the same time because $100-22=78$. Therefore, at least $22*N$ worker threads and $22*N$ completion port threads are available for other uses (such as for the Web service callbacks).

For example, if you have a server with four processors and hyperthreading enabled, then $n=8$ ($=2*4$). Based on these formulas, you would use the following values for the configuration settings that are mentioned in this section.

```
<system.web>
.....
<processModel maxWorkerThreads="100" maxIoThreads="100" minWorkerThreads="50" />
<httpRuntime minFreeThreads="176" minLocalRequestFreeThreads="152" />
<connectionManagement>
  <add address="[ProvideIPHere]" maxconnection="96" />
</connectionManagement>
.....
</system.web>
```

Also, if you use this configuration, 12 connections are available per CPU per IP address for each AppDomain, and you can execute a maximum of 624 .NET requests at the same time because $8 * 100 - 176 = 624$.

3.6 Database performance settings

3.6.1 Recommended database driver

The following database drivers are recommended for Apeon for PowerBuilder .NET:

Table 3.2: Recommended database drivers

Database Type	Recommended Driver
ASA	Native Driver
ASE	ODBC Driver
SQL Server	Native Driver
Oracle	Native Driver
Informix	Native Driver
Teradata	Native Driver

3.6.2 Recommended database setting

Setting appropriate values for the database parameters based on the actual needs can reduce the occurrence of database deadlock and block hence can improve the concurrency and stability of the Web application.

3.6.2.1 Command Timeout

Specify the timeout period for the commands. In the following table, it shows how to set Command Timeout to 120 seconds in different databases.

Table 3.3: Command timeout settings in different databases

Database Type	Parameter	Remark
ASA	BLOCKING_TIMEOUT	Execute the following command: SET OPTION Public.BLOCKING_TIMEOUT = 120000
ASE	lock wait period	Execute the following command: sp_configure "lock wait period", 120
SQL Server	-	Modify the Command Timeout parameter in Edit Data Source page of AEM. Command Timeout = 120
Oracle	IDLE_TIME	Execute the following command: ALTER PROFILE default LIMIT IDLE_TIME 2;

Database Type	Parameter	Remark
Informix	DEADLOCK_TIMEOUT	Modify the DEADLOCK_TIMEOUT parameter in ONCONFIG.std file. DEADLOCK_TIMEOUT = 120
Teradata	-	Modify the Command Timeout parameter in Edit Data Source page of AEM. Command Timeout = 120

4 Identifying Performance Bottlenecks

4.1 Overview

There are several methods to identify performance bottlenecks in your application. You can manually test your application or utilize Apeon's built-in performance reporting tool. Manually testing is the most time-consuming but also the most comprehensive and accurate. Nonetheless, the performance reporting tool, can help to identify most problematic Windows without a lot of work.

4.2 Apeon Performance Analyzer

Apeon Performance Analyzer is a tool in Apeon Server Web Component to help diagnose application performance by analyzing script calls, application RPC calls, application errors and application downloads, and thereby calculate the time used by function calls or object calls.

4.2.1 Getting Started

Before we start to work with Apeon Performance Analyzer, let's learn how to start it and what it looks like first.

- [Enabling Apeon Performance Analyzer](#)
- [Starting Apeon Performance Analyzer](#)
- [Getting to Know Apeon Performance Analyzer](#)
- [Removing Apeon Performance Analyzer](#)

4.2.1.1 Enabling Apeon Performance Analyzer

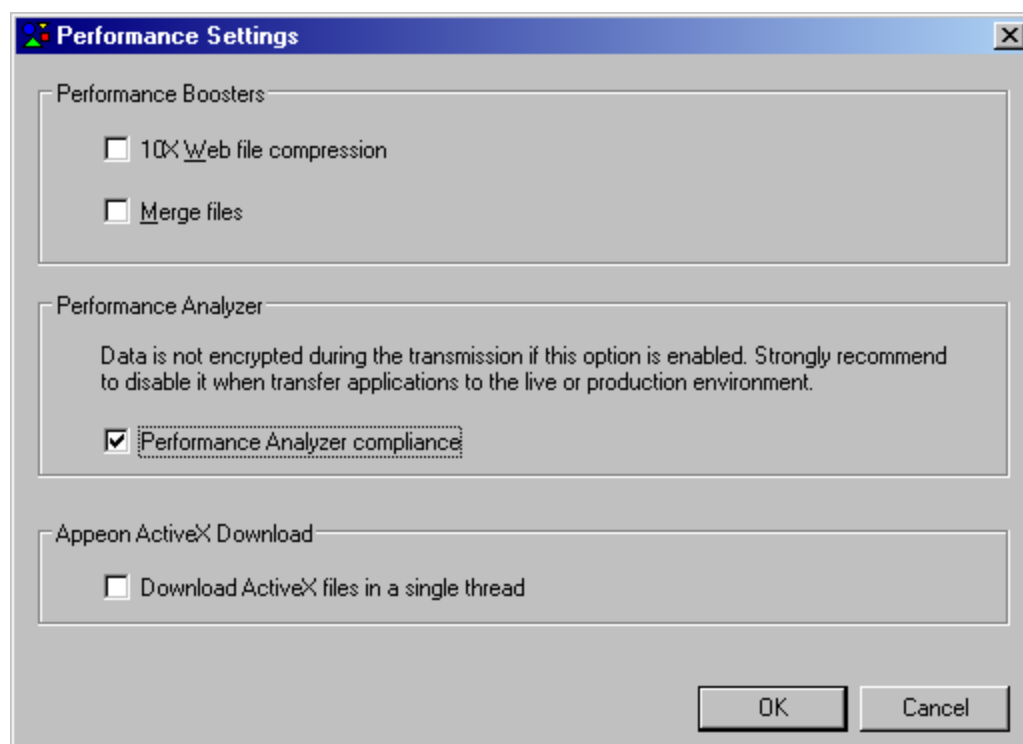
Apeon Performance Analyzer is turned on or off at application level. If you want to analyze an application by using Apeon Performance Analyzer, you need to deploy the application in a mode compliant with Performance Analyzer. To do this:

Step 1 -- Select the *Performance Analyze compliance* option in the Application Profile Configuration tool in Apeon Developer. It is not selected by default.

Step 2 -- Deploy the application using the Apeon Deployment Wizard in Apeon Developer.

The application files are deployed and generated in a mode compliant with the Performance Analyzer tool.

Note: as the data is not encrypted during transmission at runtime, therefore, the *Performance Analyze compliance* option is recommended to use only at the test or development stage. When the application is ready to go live in a production environment, turn off this option and then re-deploy the application, to ensure data is encrypted during transmission.

Figure 4.1: Performance Analyze compliance option

4.2.1.2 Starting Apeon Performance Analyzer

Performance Analyzer is a Web tool that can only be launched side by side with the Web application you want to analyze.

Notes:

1. Apeon Performance Analyzer can only run on a 32-bit operating system.
2. For the first time to run it, users should log into Windows as an administrator and turn off UAC (if using Windows Vista, Windows 7 etc.). To turn off UAC, go to Windows Control Panel | User Accounts, click *Turn User Account Control on or off*, then uncheck the check box of *Use User Account Control (UAC) to help protect your computer*.

You can start Apeon Performance Analyzer by the following steps:

Step 1 -- Run the Web application you want to analyze. The URL of the Web application should look like this: `http://hostname:port/applicationname/x32_index.htm`.

Note: Hostname indicates the IP address or machine name of the Web Server, and port indicates the HTTP port number of the Web Server. Port is optional and specifies the port number that your Web Server accepts for HTTP connections. If it is not specified, the default port is 80. If several Web Servers are running on the same machine, make sure that the port specified is a port of the Apeon Web Server.

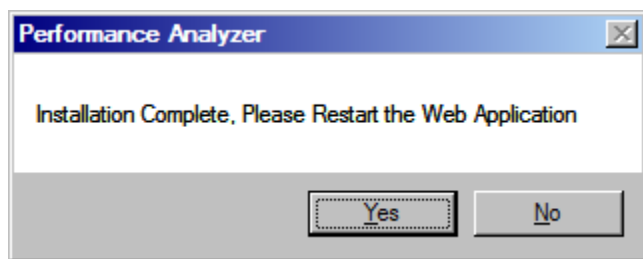
Step 2 -- When the application has started up, append **"?performance=1"** to the application URL in the address bar and press Enter to refresh the application.

So the complete URL should look like `http://hostname:port/applicationname/x32_index.htm?performance=1` or `http://localhost/pet_world/x32_application.htm?performance=1`.

Then the main window of the Performance Analyzer pops up.

Note: A prompt window pops up if the Performance Analyzer is run for the first time.

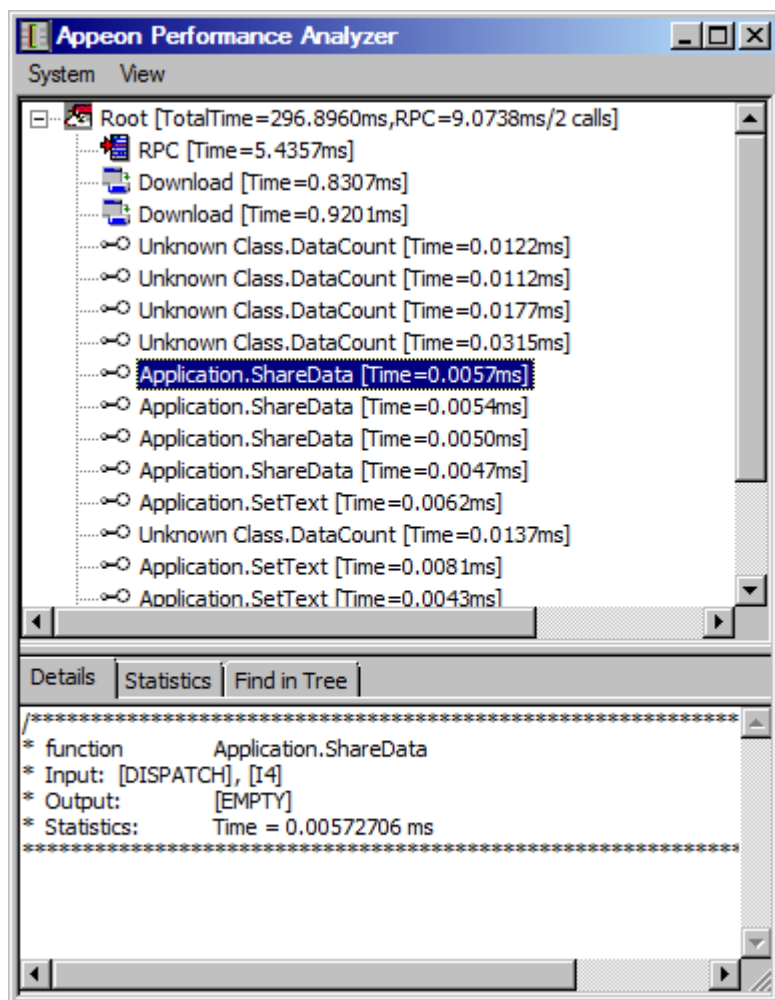
Figure 4.2: Performance analyze prompt



Click *Yes* to close the browser running the Web application; then re-do Step 1 and 2; Apeon Performance Analyzer will start up side by side with the Web application. Or click *No*, to let the Web application continue to run as it is.

The main window of Apeon Performance Analyzer looks like this.

Figure 4.3: Performance analyzer main window



Apeon Performance Analyzer will automatically open when the Web application runs by URL `http://hostname:port/applicationname/x32_index.htm?performance=1`, unless you deselect the *Show window when started* option in the Apeon Performance Analyzer Configuration dialog (from menu System | Config) See [System Configuration](#) for details.

4.2.1.3 Getting to know Apeon Performance Analyzer

Apeon Performance Analyzer window includes three parts:

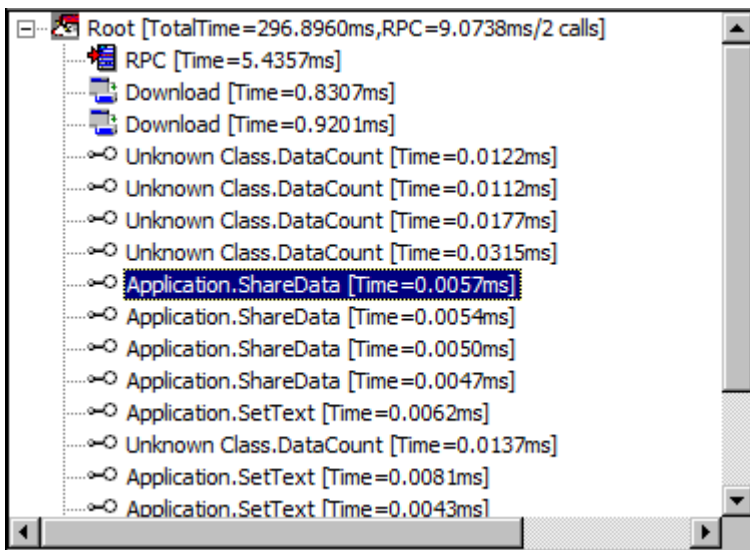
1 - The menu bar

The menu bar includes all the settings for Performance Analyzer. You can get detailed information from the sections below.

2 - Analyzing panel

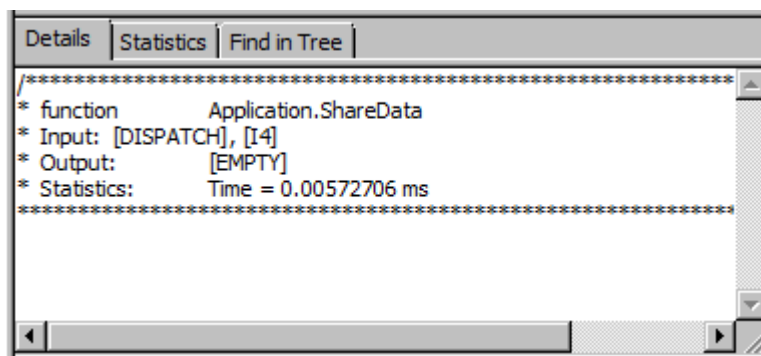
The Analyzing panel displays the data analyzed by the Performance Analyzer in a treeview. Each node of the tree represents a JS call, AX call, RPC call or Download.

Figure 4.4: Analyzing panel



3 - Detail view panel

Figure 4.5: Detail view panel



The Detail view panel shows the detailed information of the selected tree node, and also shows the statistics and search results.

4.2.1.4 Removing Apeon Performance Analyzer

In order to remove Apeon Performance Analyzer completely, you can follow the steps below:

Step 1: Make sure that the user has administrator permission, and then turn off UAC and IE.

Step 2: Open the command window and enter the following commands one by one:

```
regsvr32 -u "%systemroot%\downloaded program files\APBPanalysis.dll"
```

```
del "%systemroot%\downloaded program files\APBPanalysis.dll"
```

```
del "%systemroot%\downloaded program files\APBPanalysis.inf"
```

```
del "c:\performance\EonTracer.ini"
```

```
del "c:\performance\EonTracer.log"
```

```
rd "c:\performance"
```

After all the commands above are run, the Apeon Performance Analyzer is removed completely.

4.2.2 Working with Apeon Performance Analyzer

This section will talk about the following topics:

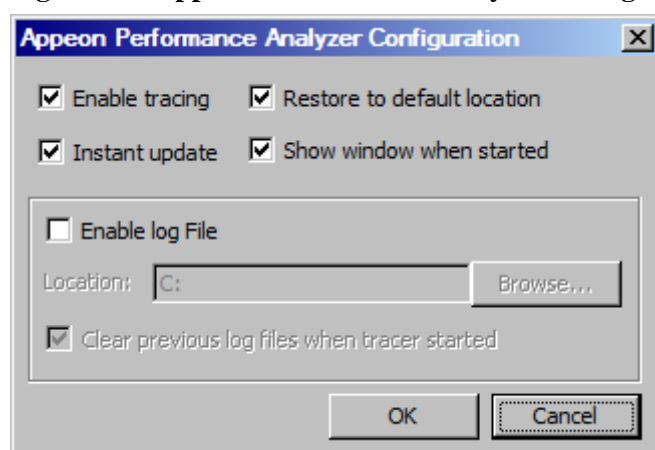
- [System Configuration](#)
- [Calls Analysis](#)
- [Download Analysis](#)
- [View Detail](#)
- [Additional functions](#)

4.2.2.1 System Configuration

In order to make Apeon Performance Analyzer more convenient for future use, you can make some configurations in the System menu.

Click menu System | Config. The Apeon Performance Analyzer Configuration dialog opens:

Figure 4.6: Apeon Performance Analyzer Configuration dialog



Enable Tracing

This option controls if Apeon Performance Analyzer works or not. If you want to work with Apeon Performance Analyzer to analyze an application program, the option must be selected. By default it is selected.

Instant update

By selecting Instant update, the analyzing data in the analyzing panel can be updated instantly when operation changes. When Instant update is not selected, Performance Analyzer will work faster; but users will need to manually click menu View | Update to see the latest data.

Restore to default location

By selecting this option, the main window of Apeon Performance Analyzer always opens at the default position. By unselecting this option, Apeon Performance Analyzer will remember its last position on the screen when it exits, and will open at the last location on the screen when it starts next time. By default, this option is selected.

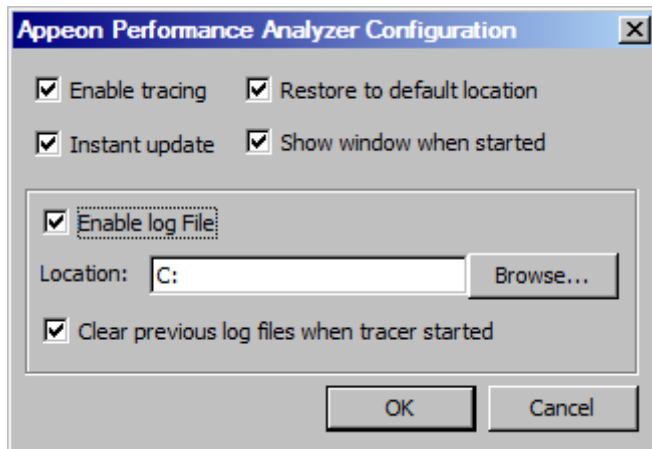
Show window when started

By selecting this option, Apeon Performance Analyzer will automatically start when the Web application runs. You can deselect this option to disable the automatic starting of Apeon Performance Analyzer, and manually Start Apeon Performance Analyzer by pressing Ctrl + Shift + F12. By default it is selected.

Enable log file

If you want to save the analyzing log in the local machine, select Enable log file. And the log file will be created after the Web application is closed.

Figure 4.7: Enable log file option



As shown above, the default destination is in C:\ disk. You can specify a different location by clicking *Browse* to select an existing folder on your computer.

Clear previous log files when tracer started

This option becomes selectable when Enable log file is selected. If you want to clear the analyzing log files saved in the last starting of Apeon Performance Analyzer, select this option.

After you finish the configuration, click *OK* to close the dialog.

4.2.2.2 Calls Analysis

Apeon Performance Analyzer enables you to perform the following analysis easily:

- [JavaScript Calls Analysis](#)

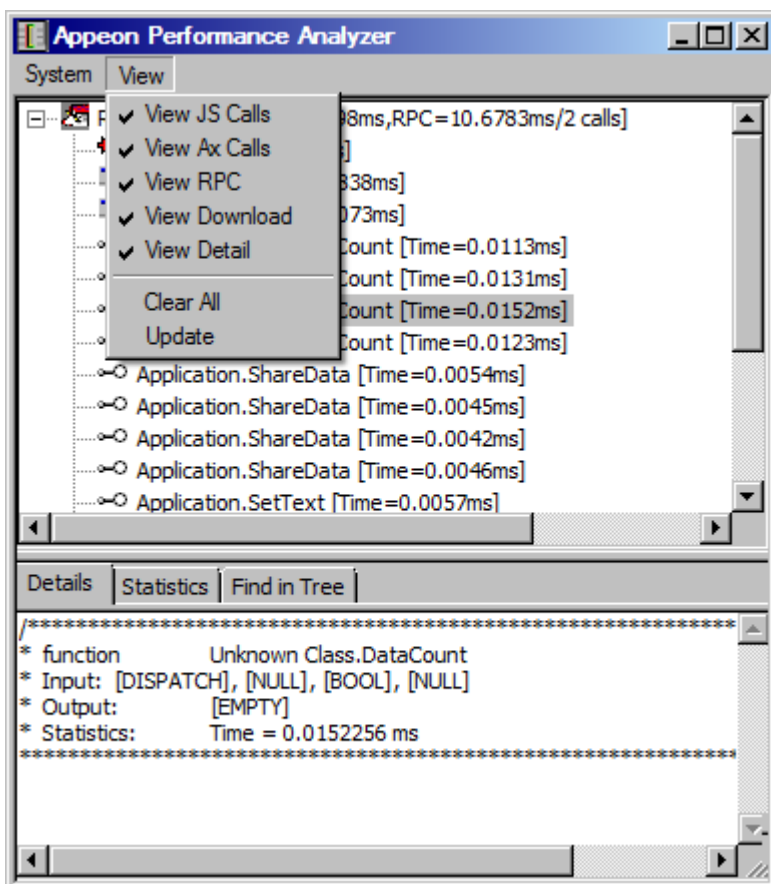
- [ActiveX Calls Analysis](#)
- [Remote Procedure Calls Analysis](#)

No matter what operation you execute on the Web application, e.g. a click on a button to open a dialog in the Web application, a root item Root will show in the first line of the analyzing panel to show the total executing time consumed by the operation.

By expanding Root, you can view the time consumed by different callings.

By default, the JS Calls, Ax Calls, RPC, Download, Detail View buttons are selected, which means, information related with them will be automatically displayed in the analyzing panel and the detail view panel.

Figure 4.8: View menu



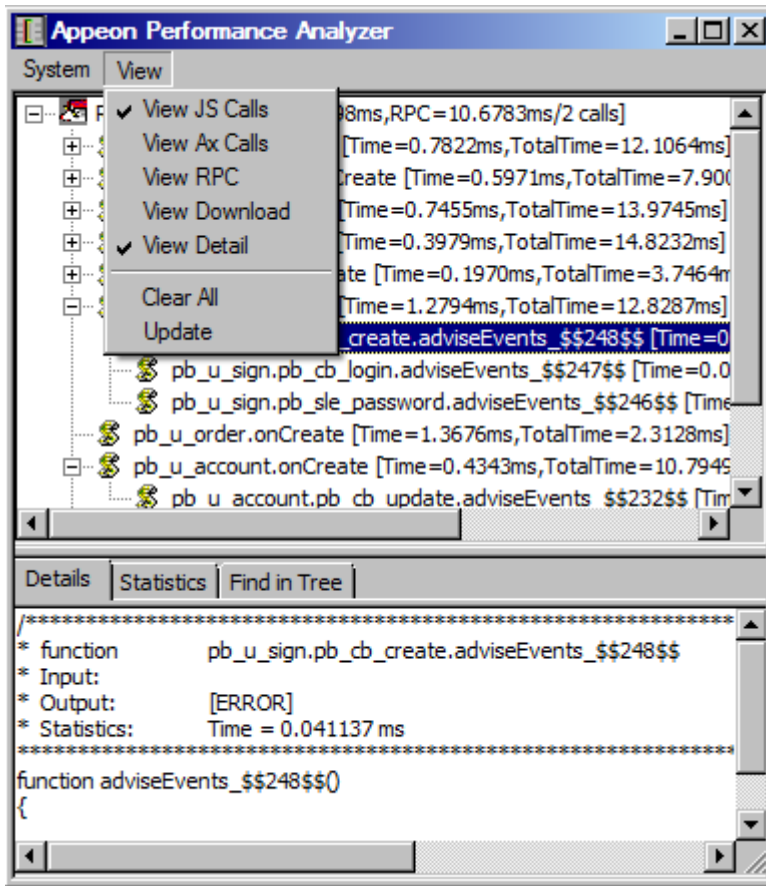
4.2.2.2.1 JavaScript Calls Analysis

By default, the View | View JS Calls menu item is selected, so the JavaScript calls are automatically listed in the analyzing panel. If you do not want to view the JavaScript calls in the analyzing panel, you can click *View JS Calls* menu item to unselect it. If you want to view the JavaScript calls only, you can click the other menu items in the View menu to unselect them, as shown in the figure below.

You can expand the sub-nodes in the JavaScript calls list to further find out the time consumed by each JavaScript function calls.

[You can see more details of JavaScript calls in the detail view panel.](#)

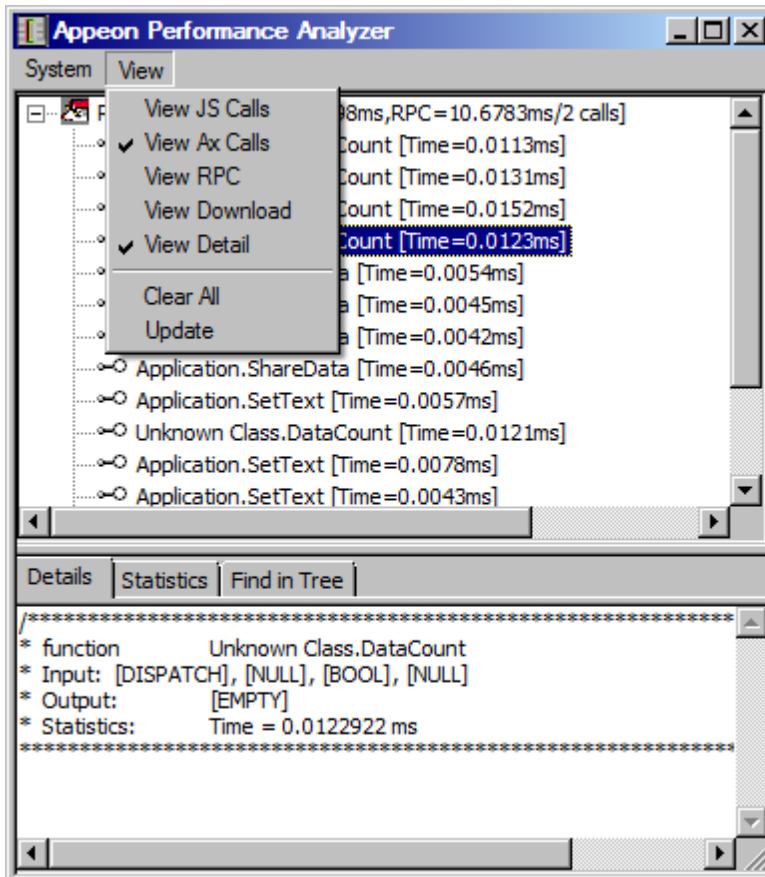
Figure 4.9: View JS Calls menu



4.2.2.2.2 ActiveX Calls Analysis

By default, View AX Calls menu item in the View menu is selected, so the ActiveX calls are automatically listed in the analyzing panel. If you do not want to view the ActiveX calls in the analyzing panel, you can click *View AX Calls* menu item to unselect it. If you want to view the ActiveX calls only, you can click the other optional menu items in the View menu to unselect them, as shown in the figure below.

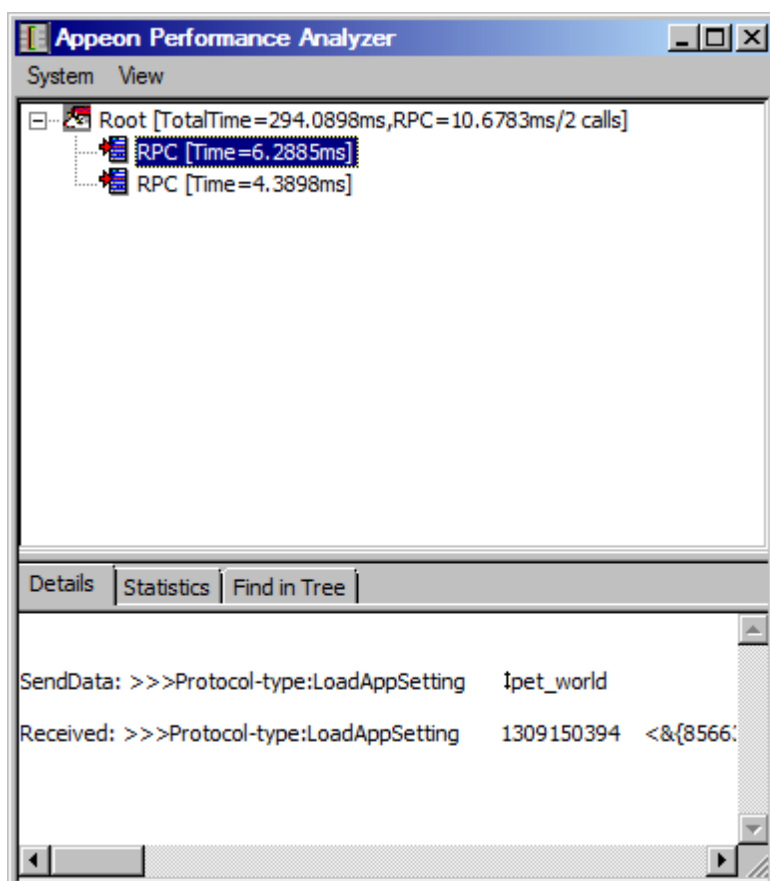
[You can see more details of the ActiveX calls in the Detail View panel.](#)

Figure 4.10: View AX Calls menu

4.2.2.2.3 Remote Procedure Calls Analysis

By default, View RPC in the View menu is selected, so the RPC calls are automatically listed in the analyzing panel. If you do not want to view the RPC calls in the analyzing panel, you can click *View RPC* menu item to unselect it. If you want to view the RPC calls only, you can click the other optional menu items in the View menu to unselect them, as shown in the figure below.

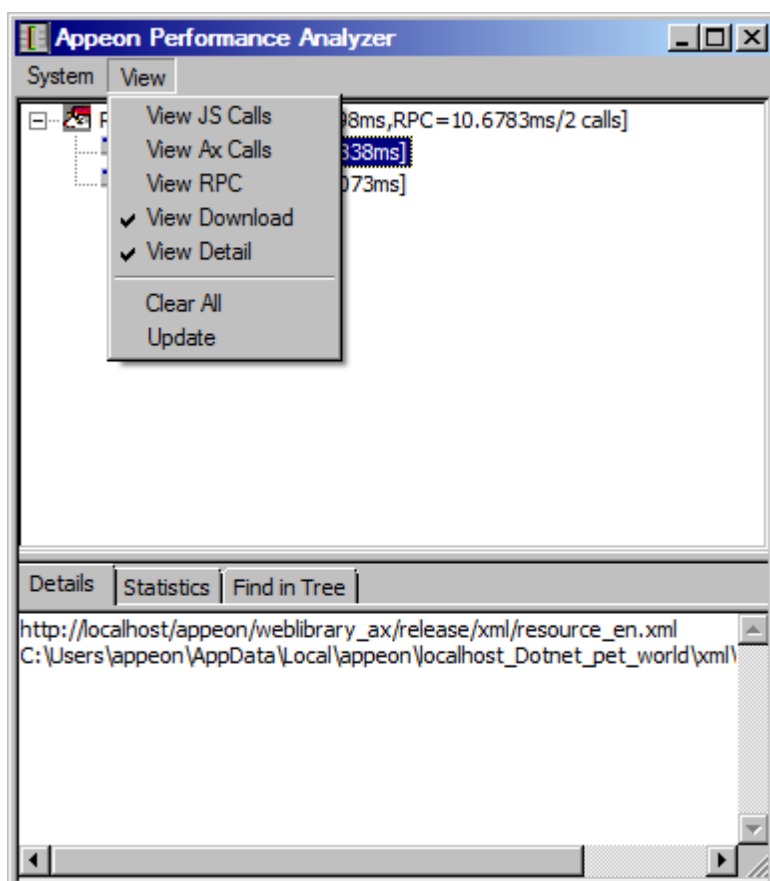
[You can see more details of the RPC calls in the Detail View panel.](#)

Figure 4.11: View RPC menu

4.2.2.3 Download Analysis

By default, View Download in the View menu is selected, so the downloads are automatically listed in the analyzing panel. If you do not want to view the downloads in the analyzing panel, you can click the *View Download* menu item to unselect it. If you want to view the downloads only, you can click the other optional menu items in the View menu to unselect them, as shown in the figure below.

[You can see more details of downloads in the Detail View panel.](#)

Figure 4.12: View Download menu

4.2.2.4 View Detail

By default, the View | View Detail menu item is selected, so the View Detail panel is automatically displayed beneath the analyzing panel. If you do not want to see the View Detail panel, you can click the *View Detail* menu item to unselect it.

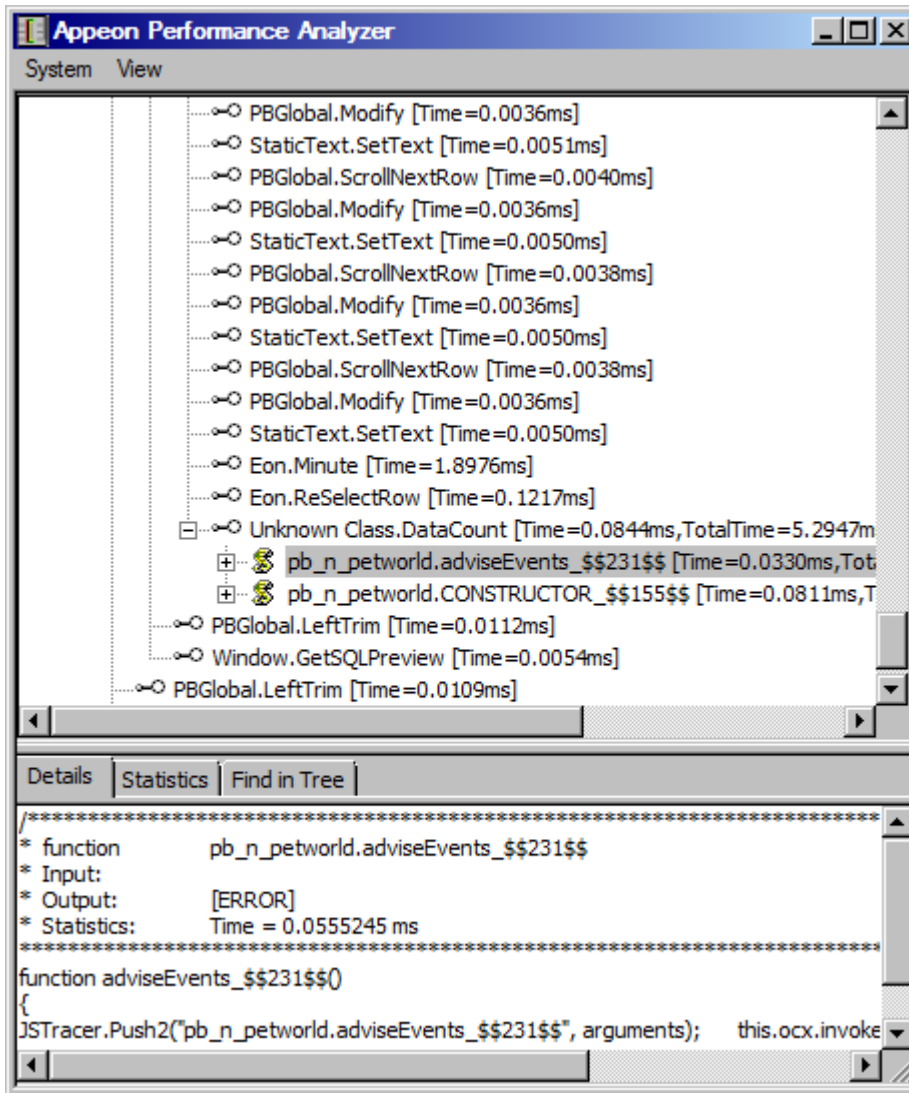
The detail view panel enables you to view the details and statistics of calls.

View details of JavaScript calls in the detail view panel:

Display the View Detail panel by clicking the *View Detail* menu item in the View menu.

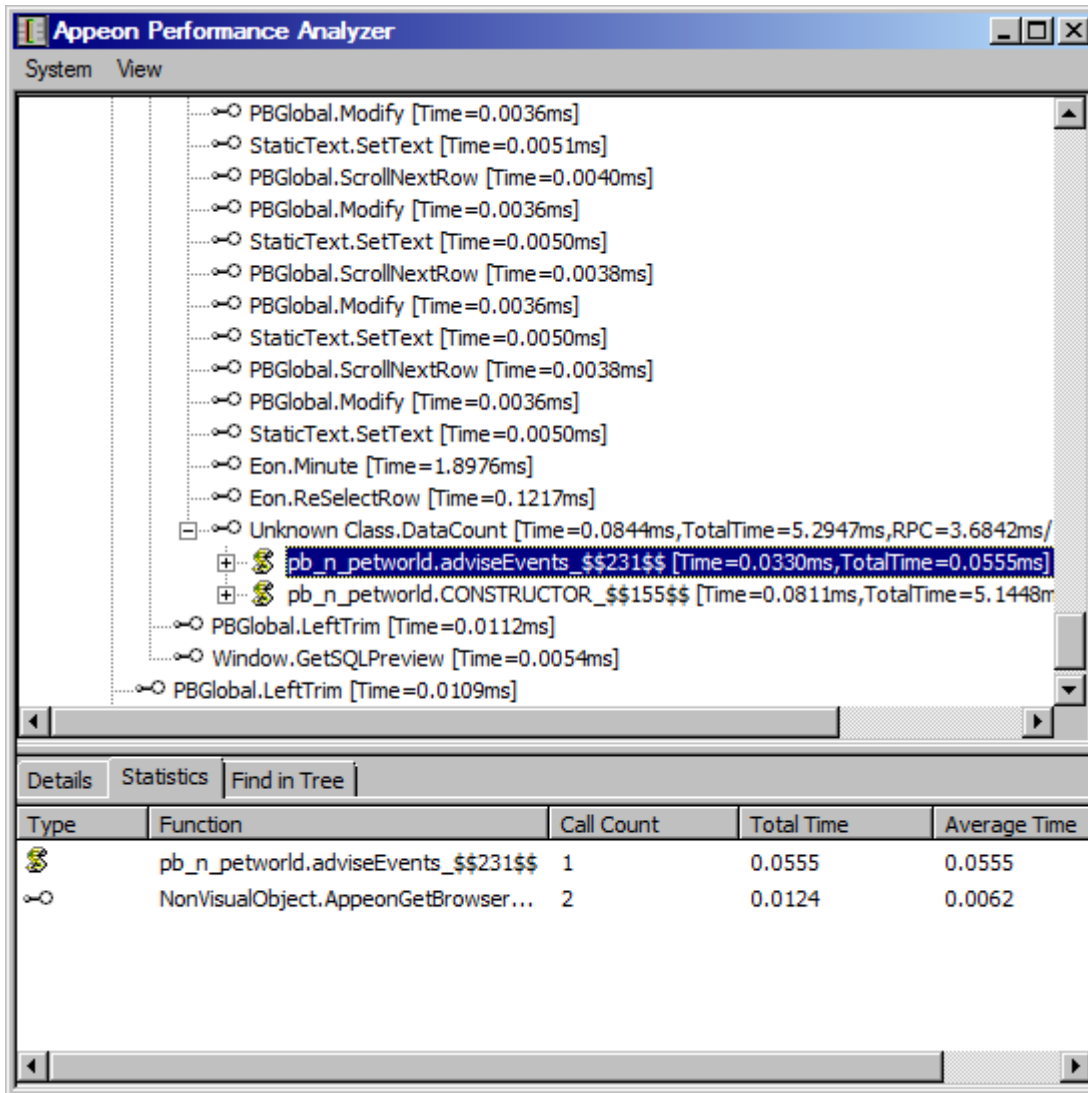
Click the *View JS Calls* menu item in the View menu to display the JavaScript calls in the analyzing panel, then select a JavaScript call, the details of the selected call are displayed in the Details tab of the detail view panel.

Figure 4.13: View details of JavaScript calls



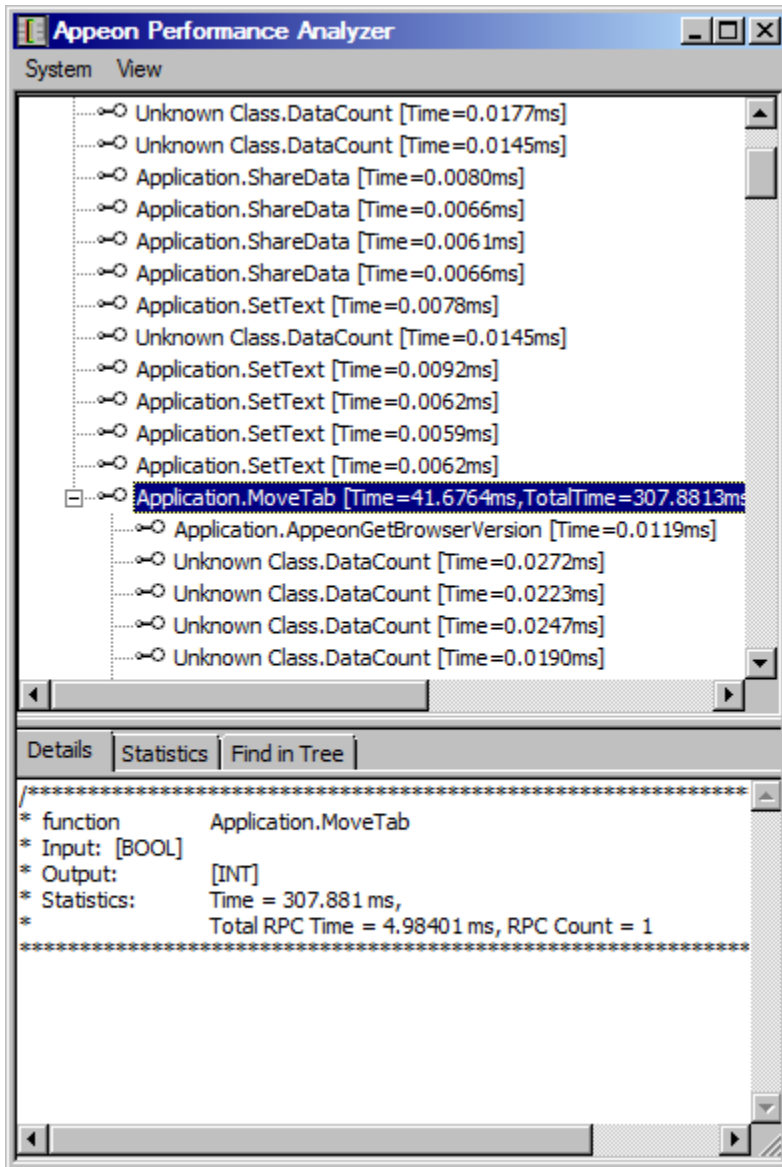
In the Statistics tab of the detail view panel, it shows the calls statistics as below:

Figure 4.14: View statistics of JavaScript calls



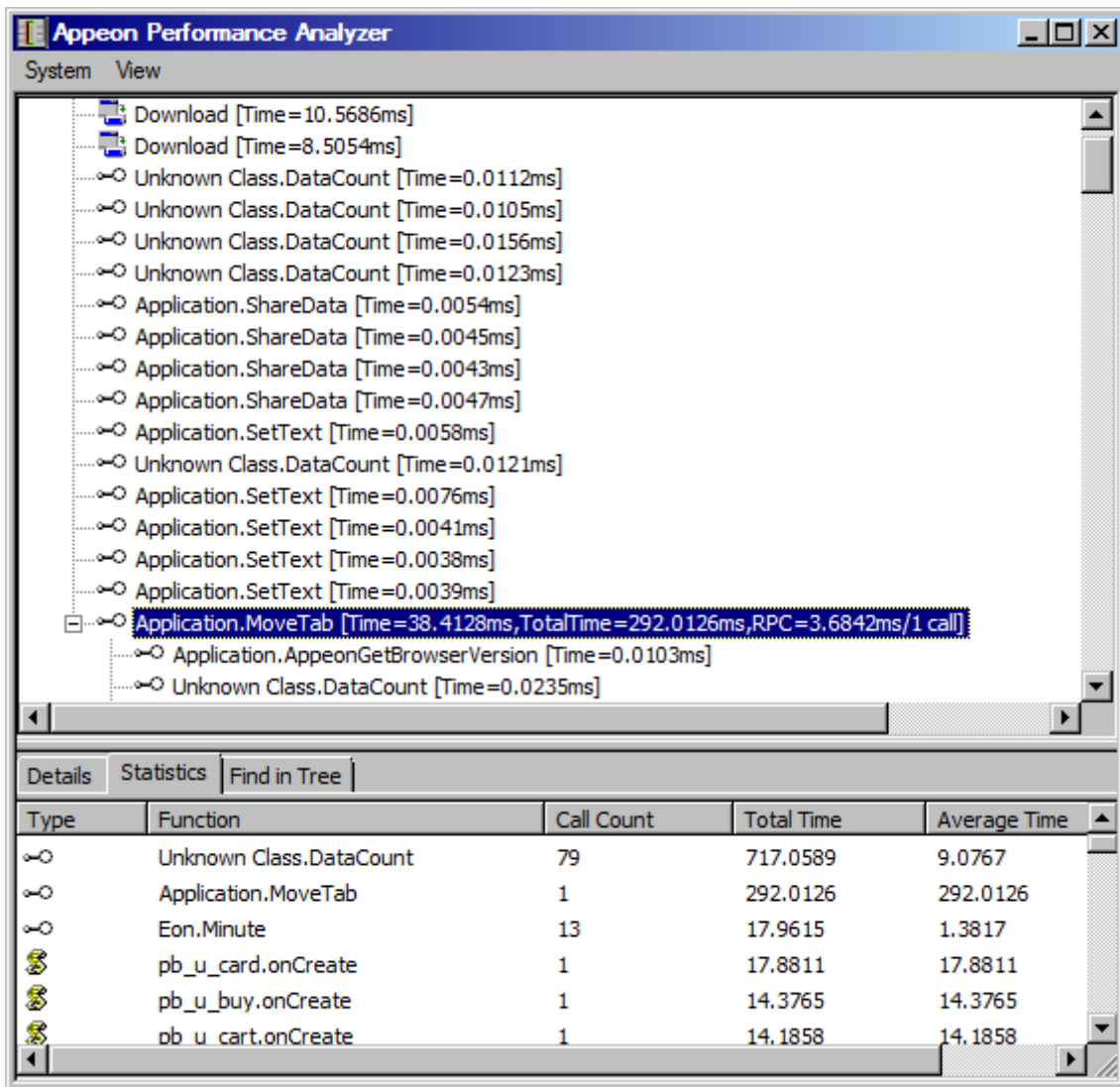
View details of ActiveX calls in the detail view panel in a similar way as JavaScript calls:

Figure 4.15: View details of ActiveX calls



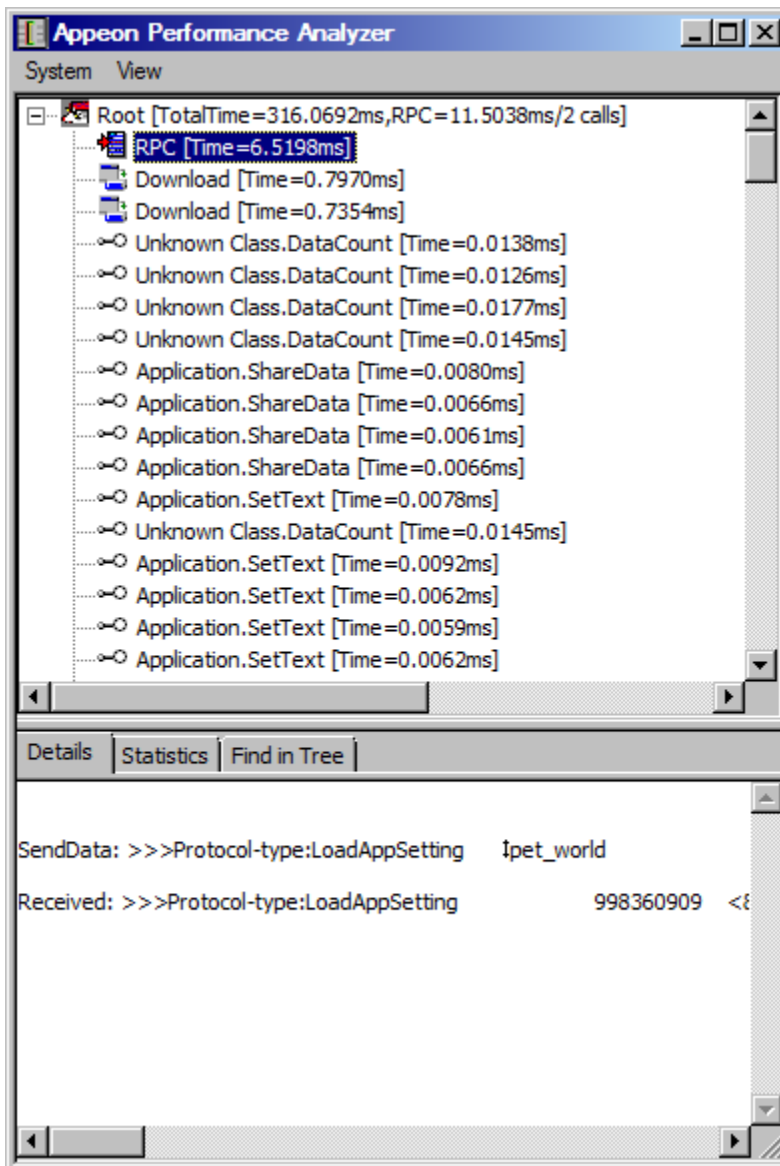
View statistics of ActiveX calls in the detail view panel in a similar way as JavaScript calls:

Figure 4.16: View statistics of ActiveX calls

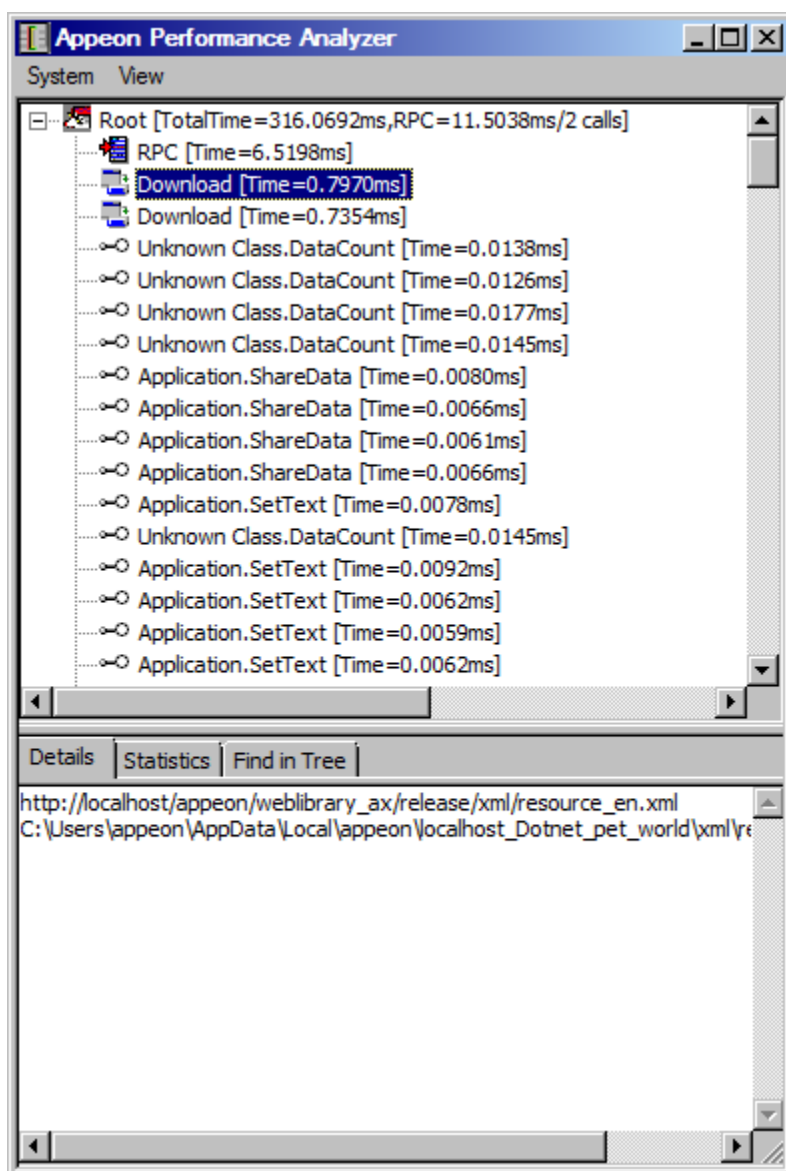


View details of RPC calls in the detail view panel in a similar way as JavaScript calls:

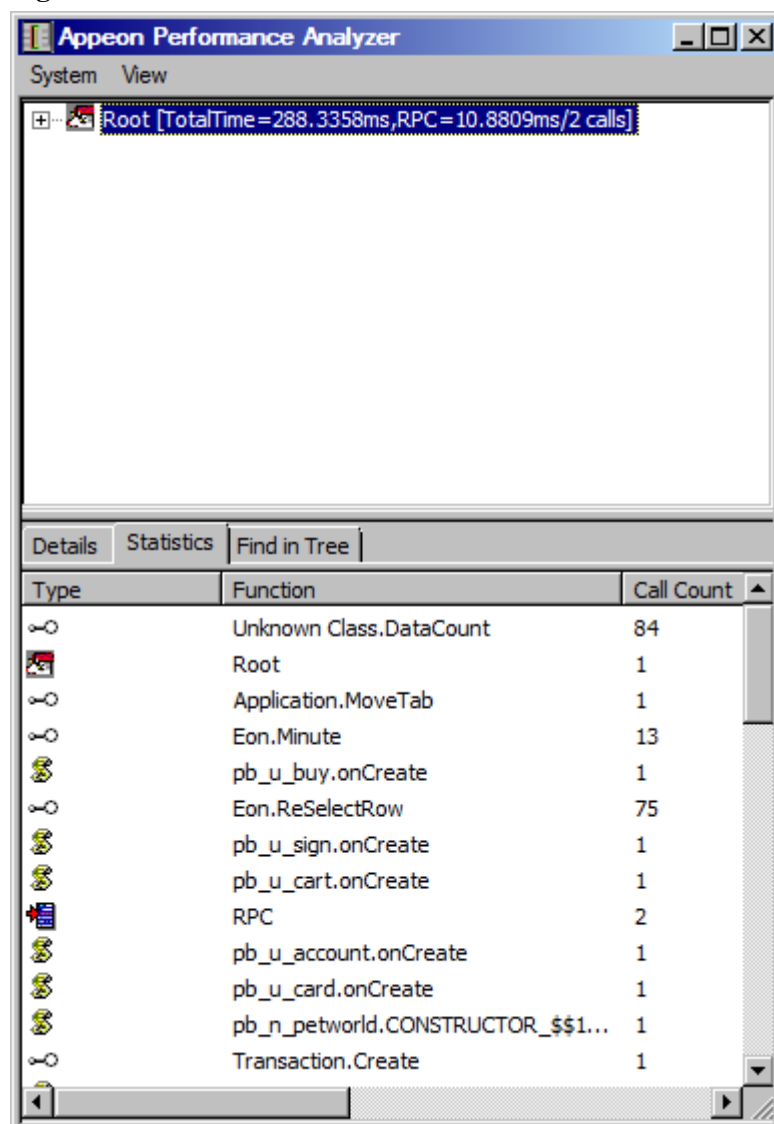
The sending and receiving procedure is roughly displayed in the Details tab, to help you check the RPC process.

Figure 4.17: View details of RPC calls**View details of downloads in the Detail View panel:**

The Details tab shows the download URL on the Web server and the storage location of the downloaded file.

Figure 4.18: View details of downloads**View statistics of root items in the detail view panel:**

When you click the item of Root, the Statistics tab shows the statistics for all the calls.

Figure 4.19: View statistics of root items

Apart from the above, the Detail View panel can also show the search results. Refer to the [Find function](#) for details.

4.2.2.5 Additional Functions

Apeon Performance Analyzer also provides the following additional functions:

- [Filter function](#)
- [Find function](#)
- [Save As XML function](#)
- [New Root Item function](#)

4.2.2.5.1 Filter function

Apeon Performance Analyzer enables you to filter the functions or objects which you do not want to focus on temporarily. Here, in Apeon Performance Analyzer, to filter means to remove.

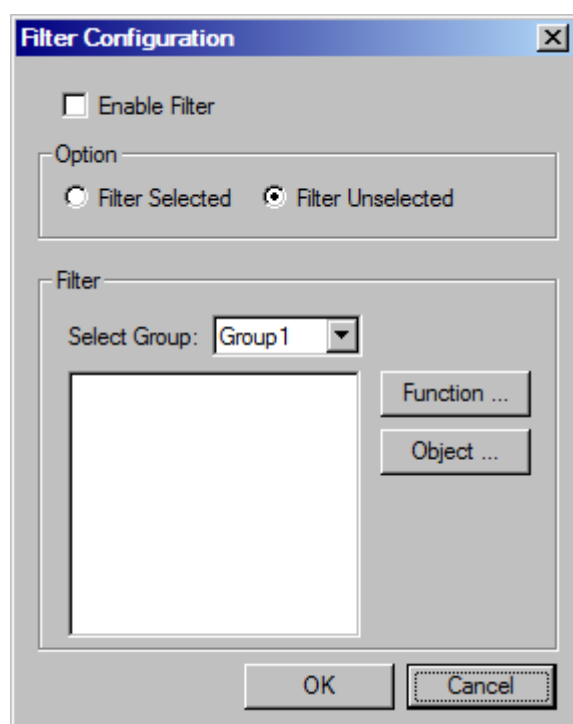
The filter function is only applicable to ActiveX calling analysis.

Click System | Filter menu item and the Filter Configuration dialog opens. Select Enable Filter.

Note: To enable the Filter function, you must make sure Enable Tracing is selected in System Configuration dialog.

If you want to analyze all the functions or objects in the application, make sure that Enable Filter is not selected.

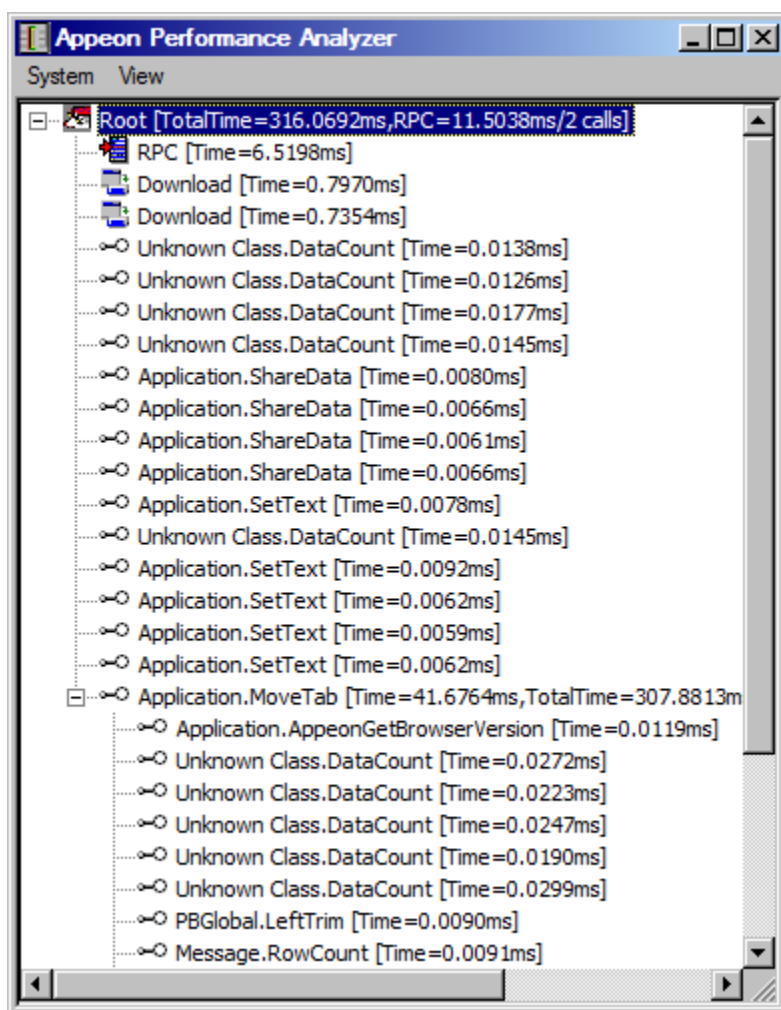
Figure 4.20: Filter Configuration dialog



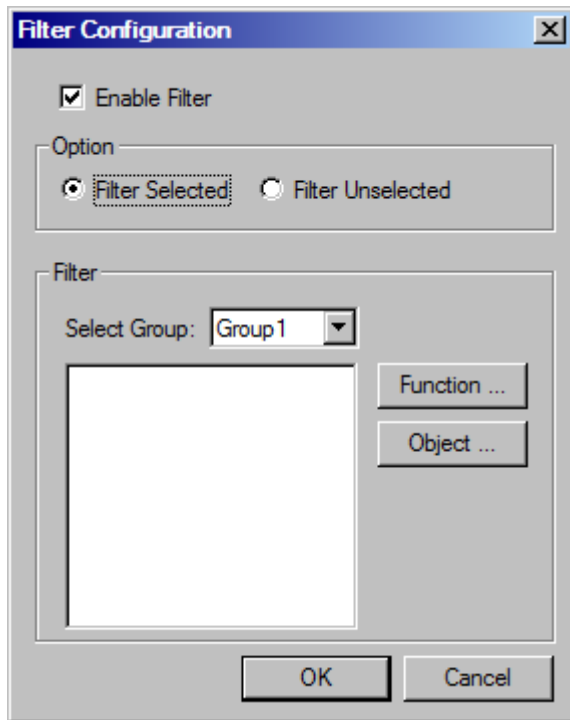
Filter function for ActiveX calls analysis

Go through the steps below to learn how to filter objects and functions for ActiveX calls analysis.

Step 1: Select View AX Calls under the View menu, all the ActiveX functions and objects called in the operation are listed.

Figure 4.21: View ActiveX calls

Step 2: Click menu System | Filter. In the Filter Configuration dialog, select Enable Filter.

Figure 4.22: Filter Configuration dialog

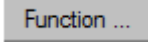
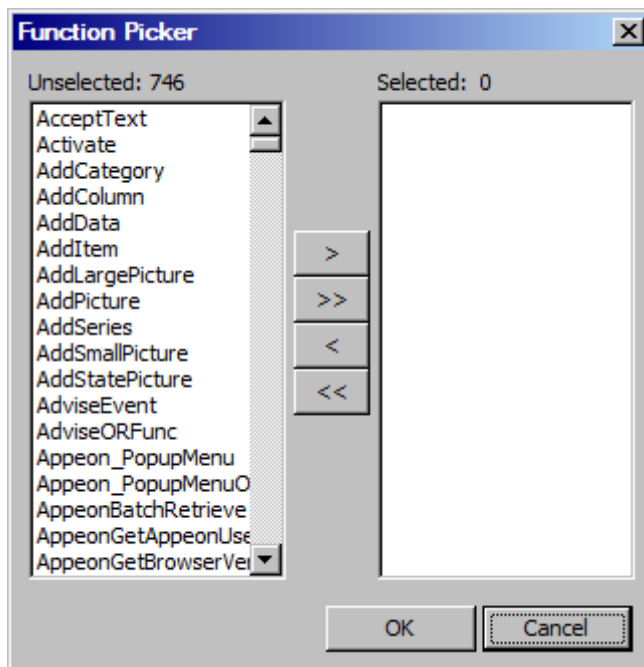
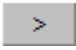
Step 3: In Filter, click the  button. The Function Picker dialog opens.

Figure 4.23: Function Picker dialog

Step 4: Select the functions and/or objects in the Unselected list. Click the arrow button  to move the selected items to the Selected list. Click *OK* to close the dialog.

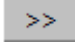
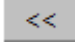
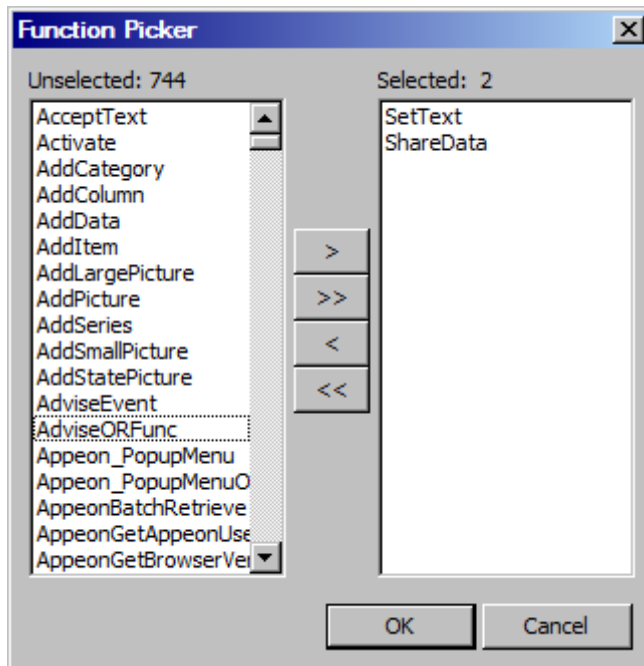
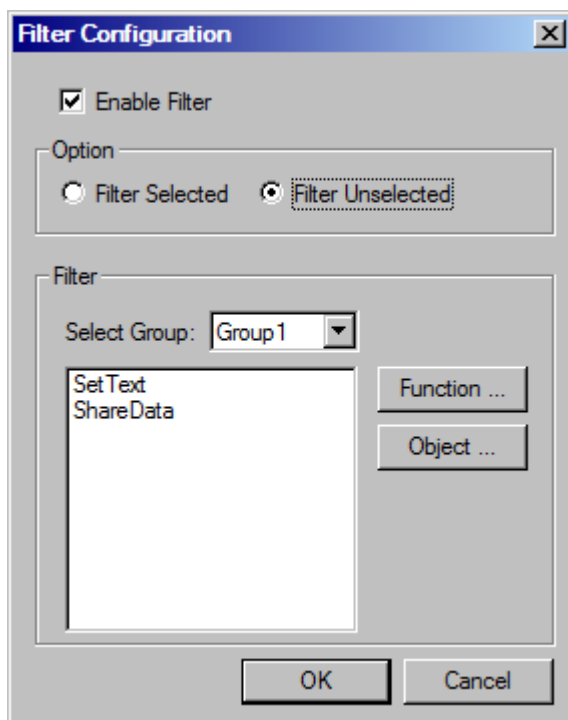
The double-arrow buttons  and  are used to move all items from one list to the other.

Figure 4.24: Selected functions and objects

Now, the selected items are in the Filter area.

Note that they are in Group 1. You can have different groups for storing different selected items. The different groups can be all functions, all objects, or mixed with functions and objects.

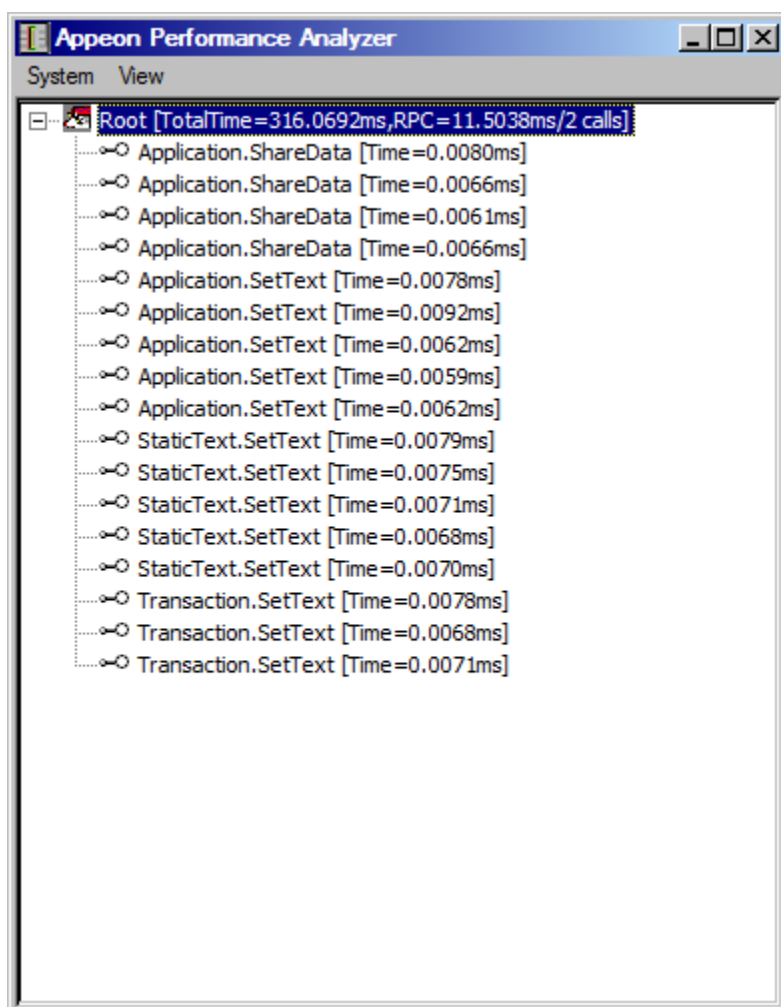
Figure 4.25: Filter Configuration dialog

Step 5: In Option area, select Filter Unselected. This will display the selected items only, and hide the unselected items. If you select Filter Selected, it will hide the selected items, and display the unselected items.

Step 6: Click *OK* to close the dialog.

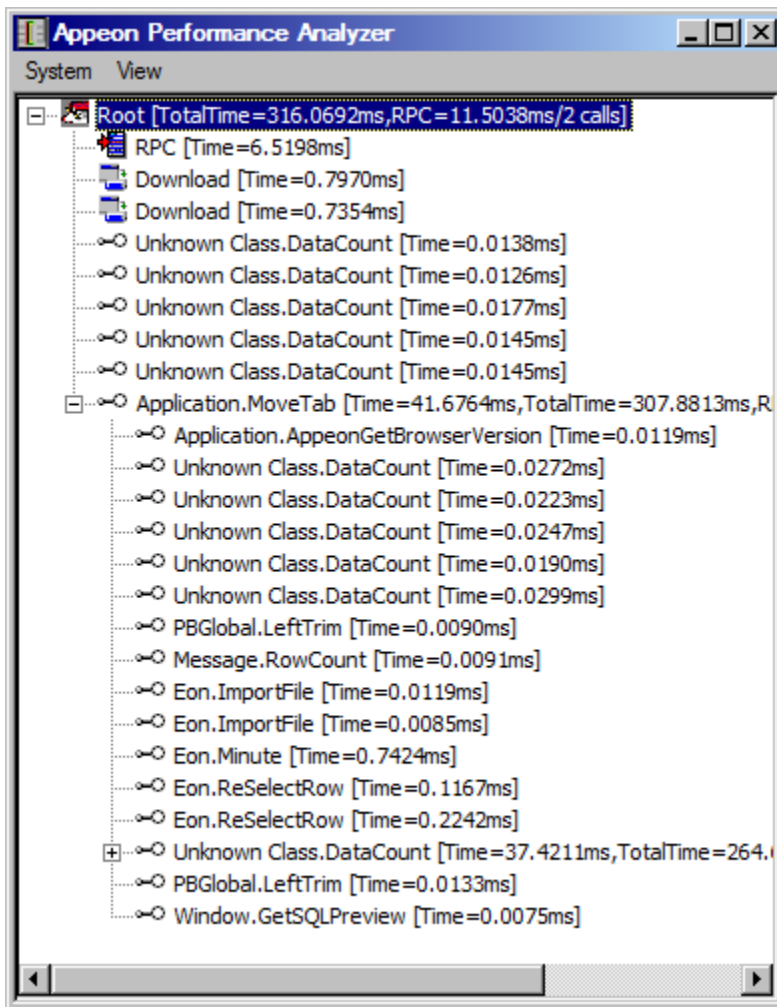
If Filter Unselected is selected, the analyzing panel is refreshed to show the selected items only (and hide the unselected items).

Figure 4.26: Result from Filter Unselected



If Filter Selected is selected, the analyzing panel is refreshed to show the unselected items only (and hide the selected items).

Figure 4.27: Result from Filter selected

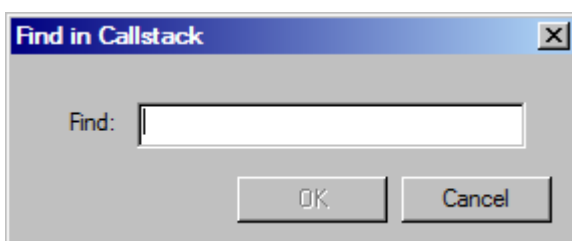


4.2.2.5.2 Find function

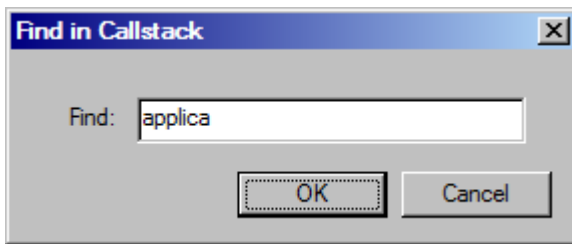
You can find functions or objects by typing part of or complete name of the function or object.

If you click menu System | Find, a dialog box will pop up as below:

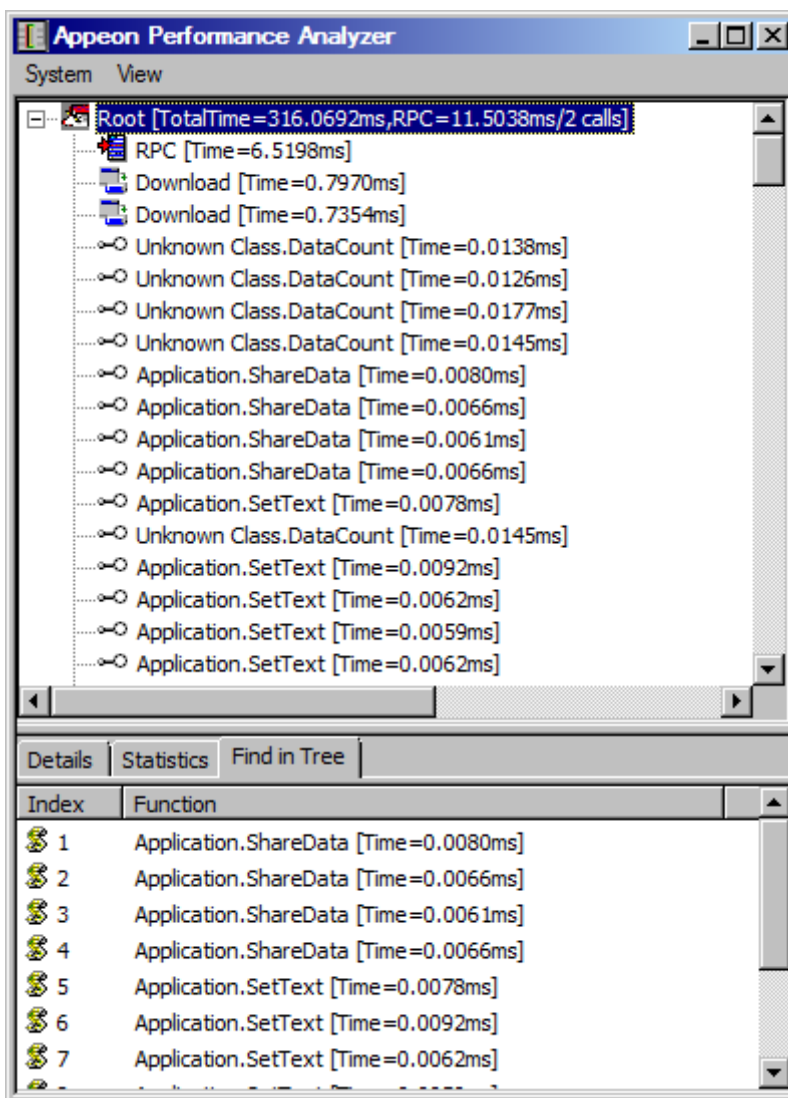
Figure 4.28: Find dialog



For example, type "applica" in the Find field, then click *Find*.

Figure 4.29: Find dialog

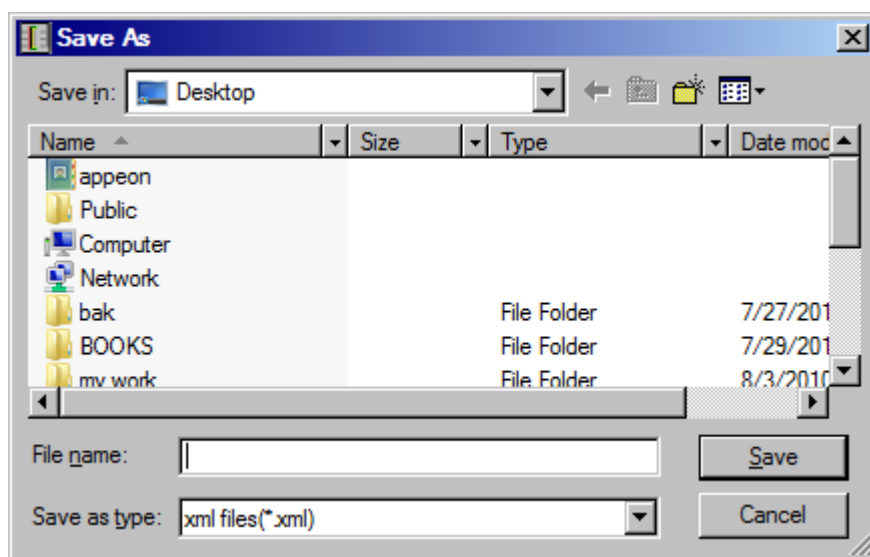
The Detail View window shows all the results related to "applica" in the Find in Tree tab.

Figure 4.30: Find results

4.2.2.5.3 Save As XML function

The Performance Analyzer allows you to save the analysis contents in the Analyzing panel as XML files.

If you click menu System | Save As XML, a dialog box will pop up as below:

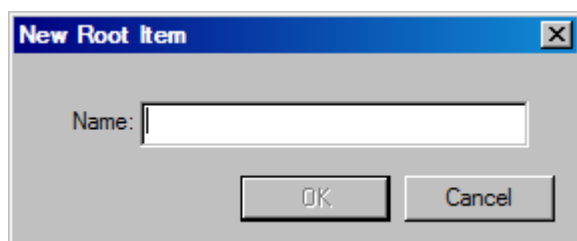
Figure 4.31: Save As dialog

Input the file name and select the path, and then click the *Save* button to save the XML file.

4.2.2.5.4 New Root Item function

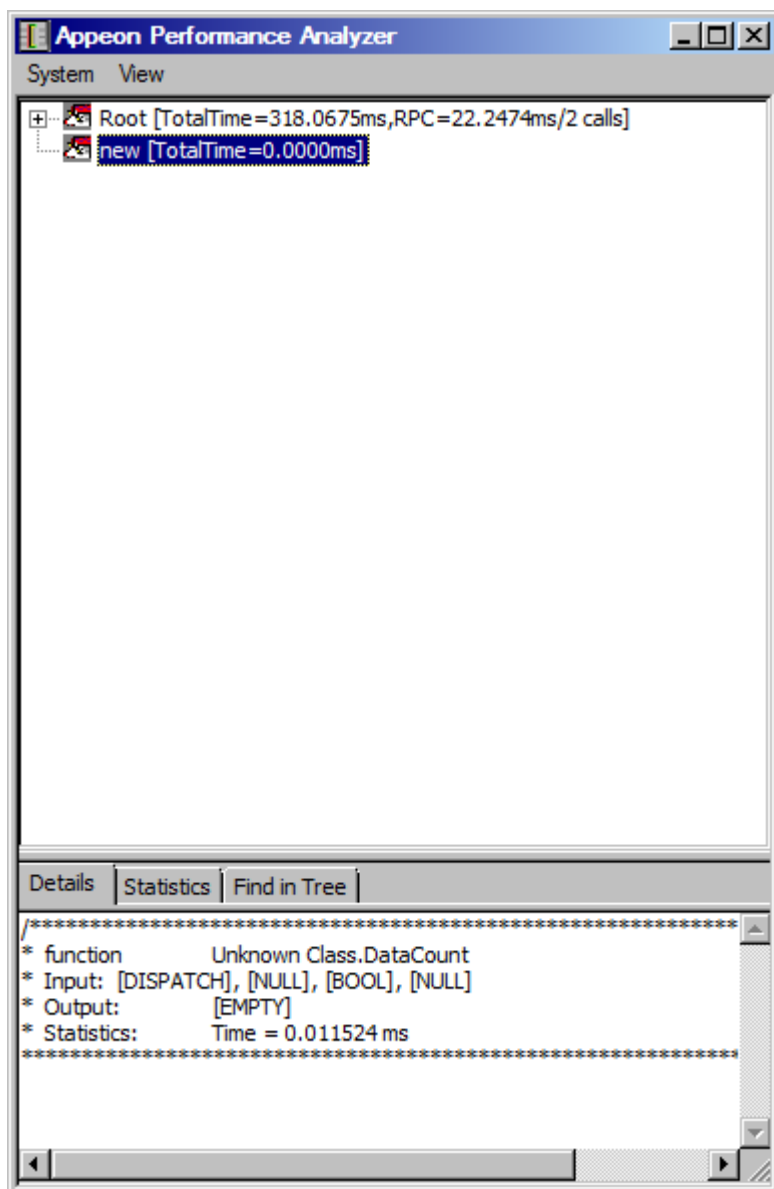
To obverse analysis data easily, you can click menu View | Clear All to clear the original analysis data, or create new root items.

If you click menu System | New Root Item, a dialog box will pop up as below:

Figure 4.32: New Root Item dialog

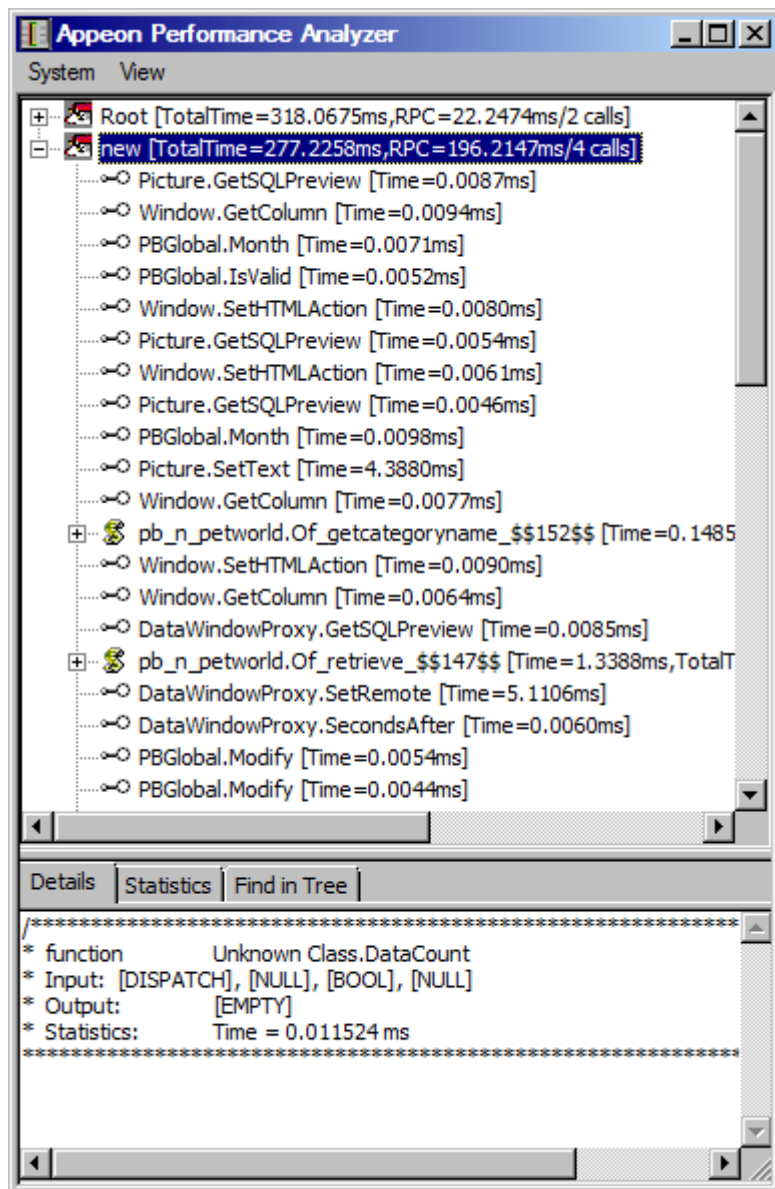
Input a root item name (eg. new) and click the *OK* button. A new root item named "new" is added in the Analysis panel.

Figure 4.33: New root item is added



After this, the root item "new" will be used to display the analysis data in a way similar to the default Root item.

Figure 4.34: Data in the new root item



4.3 Testing Apeon Web applications with LoadRunner

4.3.1 LoadRunner

LoadRunner is an automated performance and testing product for examining system behaviors and performance. HP LoadRunner can simulate hundreds or thousands of concurrent users to put the application through the rigors of real-life user loads, while collecting information from key infrastructure components (Web servers, database servers etc.) The results can then be analyzed in detail, to explore the reasons for a particular behavior.

4.3.2 General Limitations on Performance Testing

- 1) Web/HTTP protocol is used;
- 2) Only Web applications in English can be tested with LoadRunner 11.0;

3) Parameterization of embedded SQL statements are unsupported; Retrieve and Update operations are supported.

4.3.3 Testing Environment

Application Server & Database Server:

- Apeon for PowerBuilder
- PBVM 9.0.3 Build 8614, 10.2.1 Build 9537 or 10.5.0 Build 4523
- SAP Sybase EAServer 5.3 Build 53016 (Developer, Workgroup and Advanced Edition)
- Database: as needed

Client:

- Performance test tools: LoadRunner 11.0

4.3.4 Testing Steps

Put it concisely, performance test of Apeon for PowerBuilder with HTTP protocol in the test mode is to complete the following steps:

- 1) Set the record parameters and record the scripts;
- 2) Change the constants of Session ID in the scripts to variables;
- 3) If using NVO and EJB/JavaBean, you need to manually modify the handle. Refer to [Appendix](#) in this guide for details.
- 4) If testing the Update operation, you need to parameterize SQL statements (To avoid deadlock of database tables when there are many concurrent access);
- 5) Configure the Run-Time Settings;
- 6) Play back the scripts unless the tests succeed, otherwise return to 2), 3), 4);
- 7) Design and run the scenario according to the testing scheme.

4.3.4.1 Configuring AEM

- 1) Select the test mode:

Navigate to **AEM > Application > Client Features > YourApplicationName > Run Mode > Test Mode**, and then click **Save**.

- 2) Set the debug mode:

Navigate to **AEM > Server > Logging > Log Mode > Debug Mode**, and the click **Save**.

After playback scripts successfully in vugen.exe, change the Debug mode to Standard mode.

4.3.4.2 Data Preparation (for update only)

This is required only when testing the Update operation.

To simulate large number of concurrent access of Update, sufficient records should be prepared first.

Requirements on the modified table:

1. Recording Numbers must meet the following conditions: in table, Number of Records > (Vusers + 1) * Number of Modified Record/Users. For example, 10 users concurrently access and conduct the DW Update 10r x 7c with "use update" mode operation, the modified table must at least contain the following number of records: $(10 + 1) * 10 = 110$.
2. Requirements on keyword "id" in the table are: the initial value of id should be 0 (This is for simplifying the code process work for SQL statement parameterization in scripts).

4.3.4.3 Preparing Test Cases

Determine the scripts to be recorded and the actions to be executed in scripts.

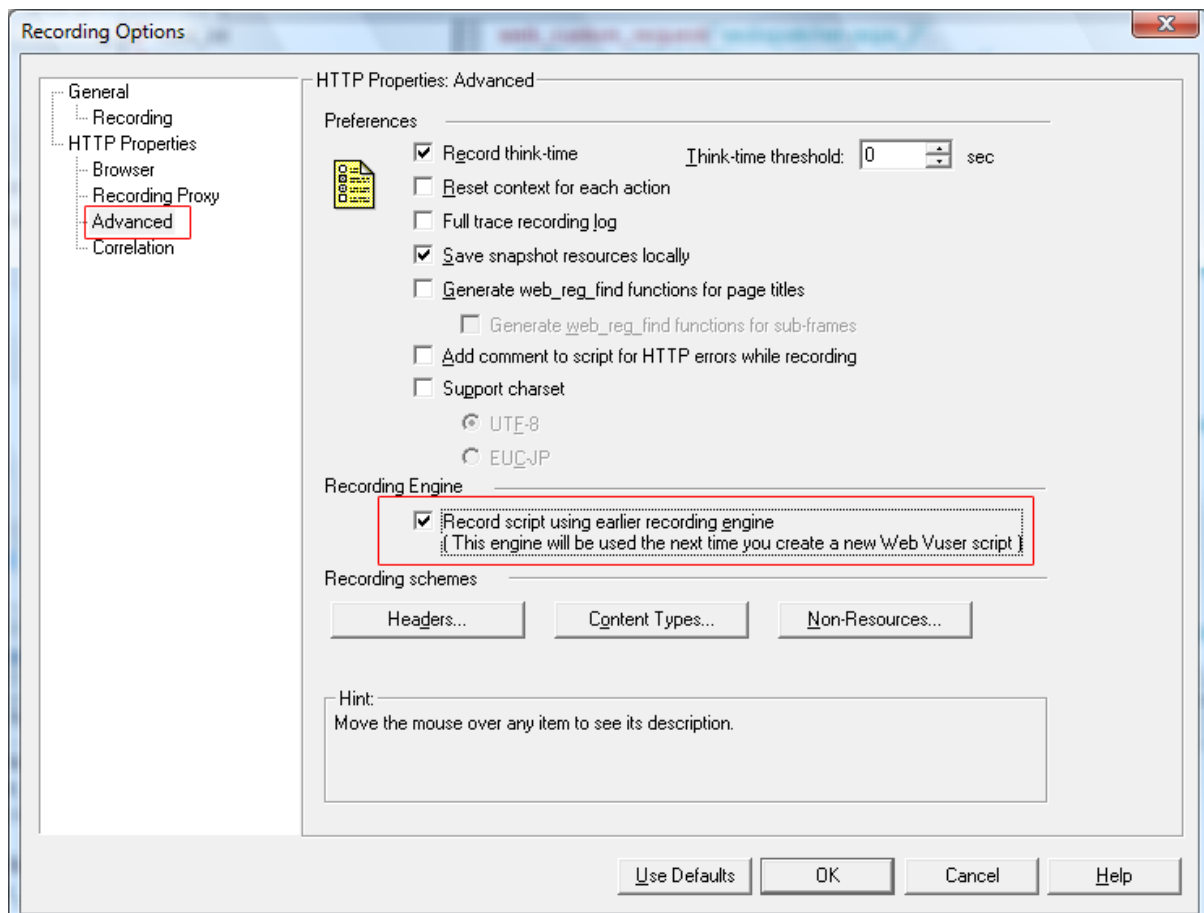
4.3.4.4 Recording Scripts

- 1) Set record engine: **Record script using earlier recording engine.**

Select from menu **File > Tools > Recording Options > Advanced.**

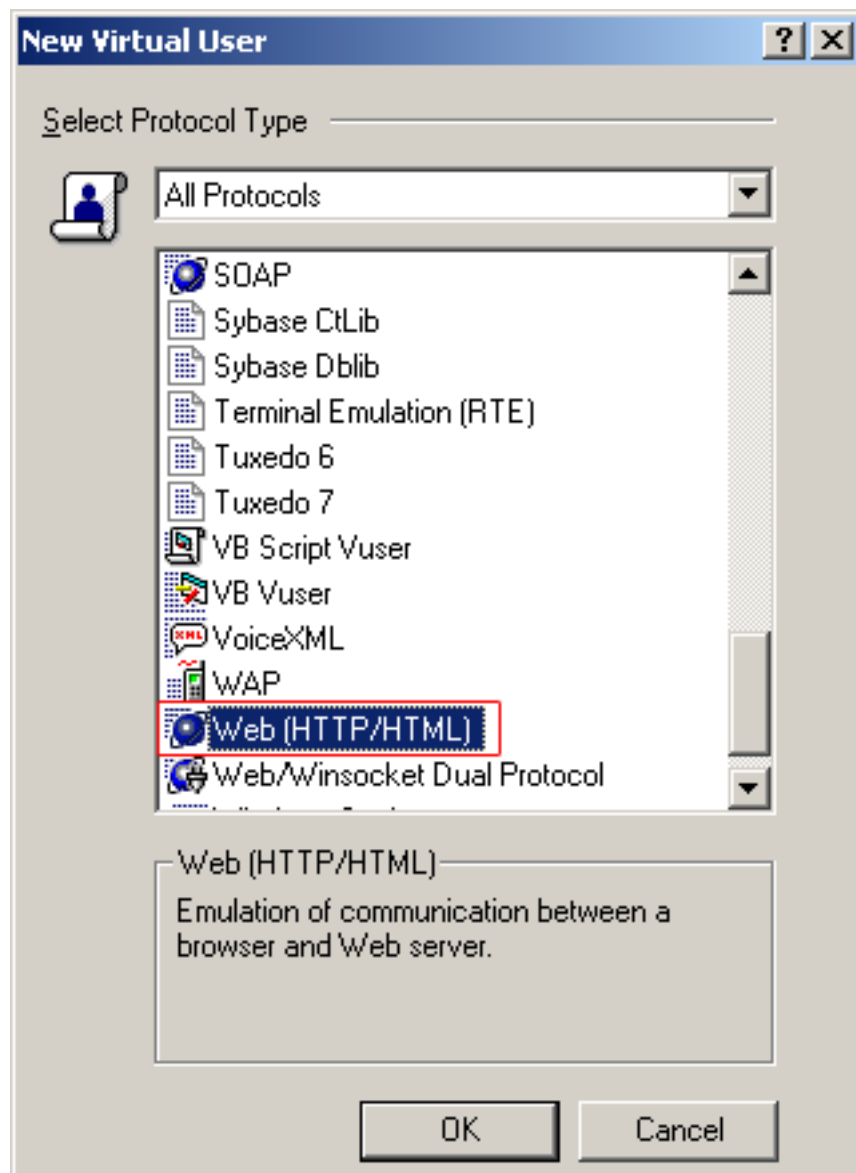
- 2) Check the **Record script using earlier recording engine** checkbox below Recording Engine as shown in the following figure. And then restart LoadRunner 11.0.

Figure 4.35: Recording Options



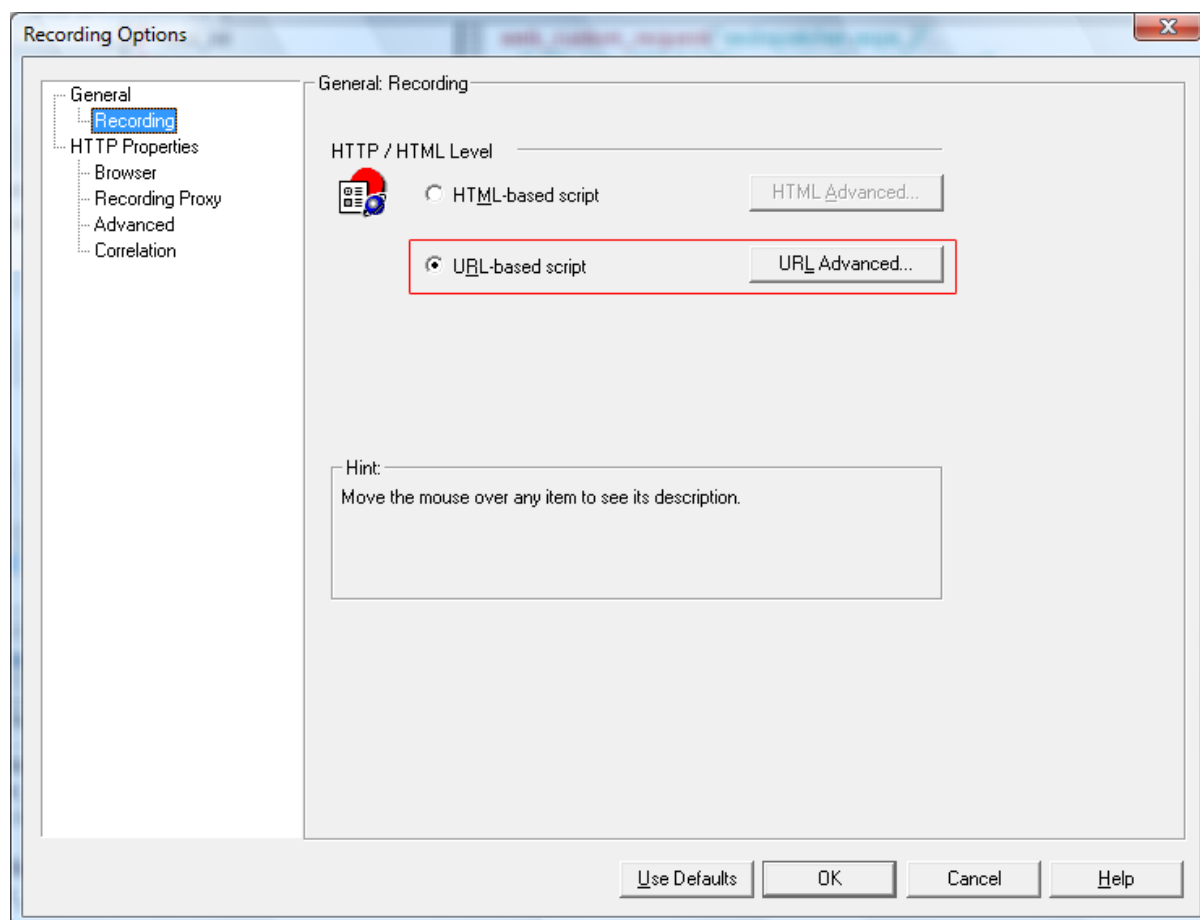
3) Set the protocol for recording: Web (HTTP/HTML): Select from menu **File > New**. In the New Virtual User dialog, select “Web (HTTP/HTML)” as shown in the following figure, and then click **OK**.

Figure 4.36: New Virtual User



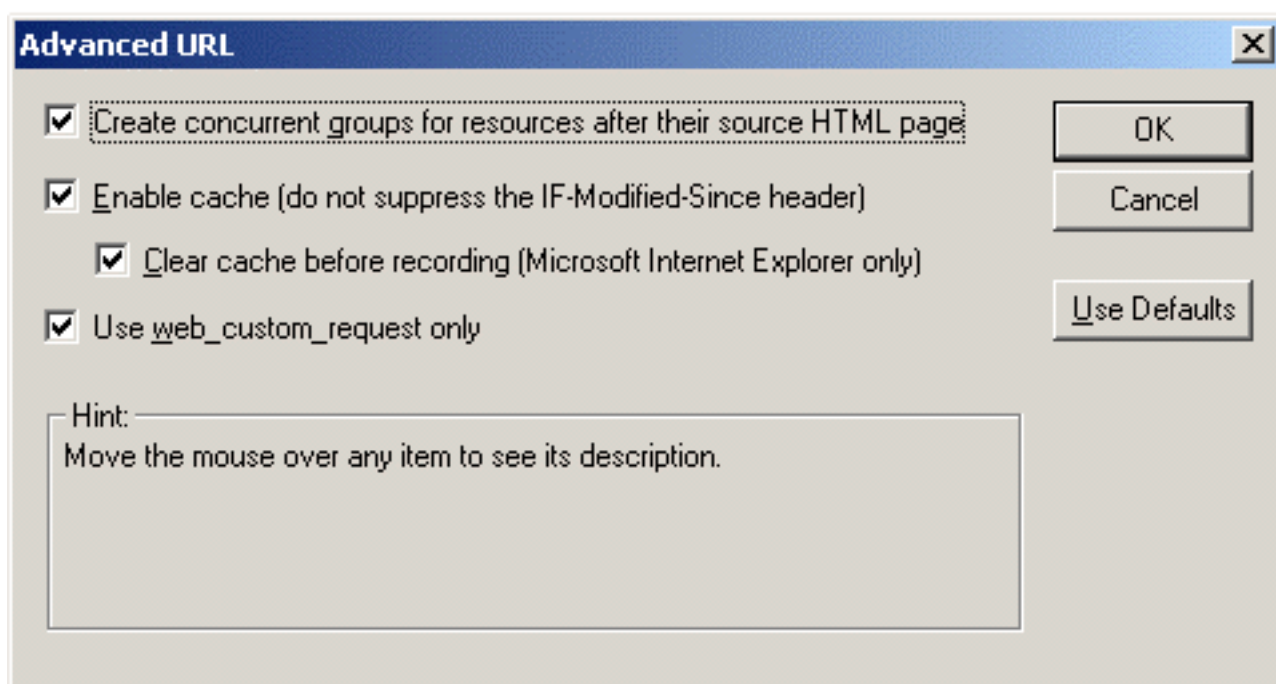
4) Set the Recording Options: Select from menu **Tools > Recording Options > General > Recording**.

In the Recording Options dialog, select the **URL-based scripts** radio button as shown in the following figure.

Figure 4.37: Recording Options

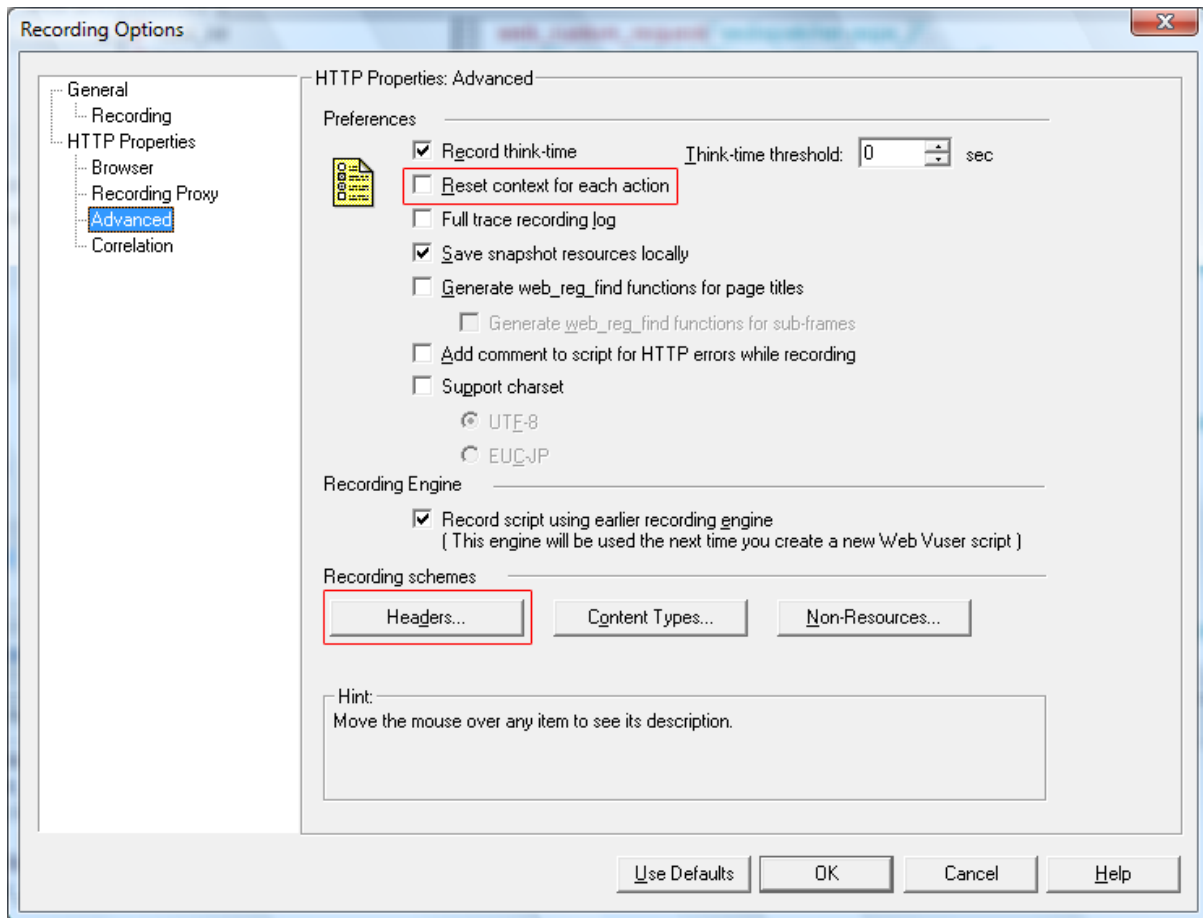
And then click the **URL Advanced** button on the same tab, the Advanced URL dialog box appears.

Specify the settings (check all the checkboxes) as shown in the following figure, and then click **OK**.

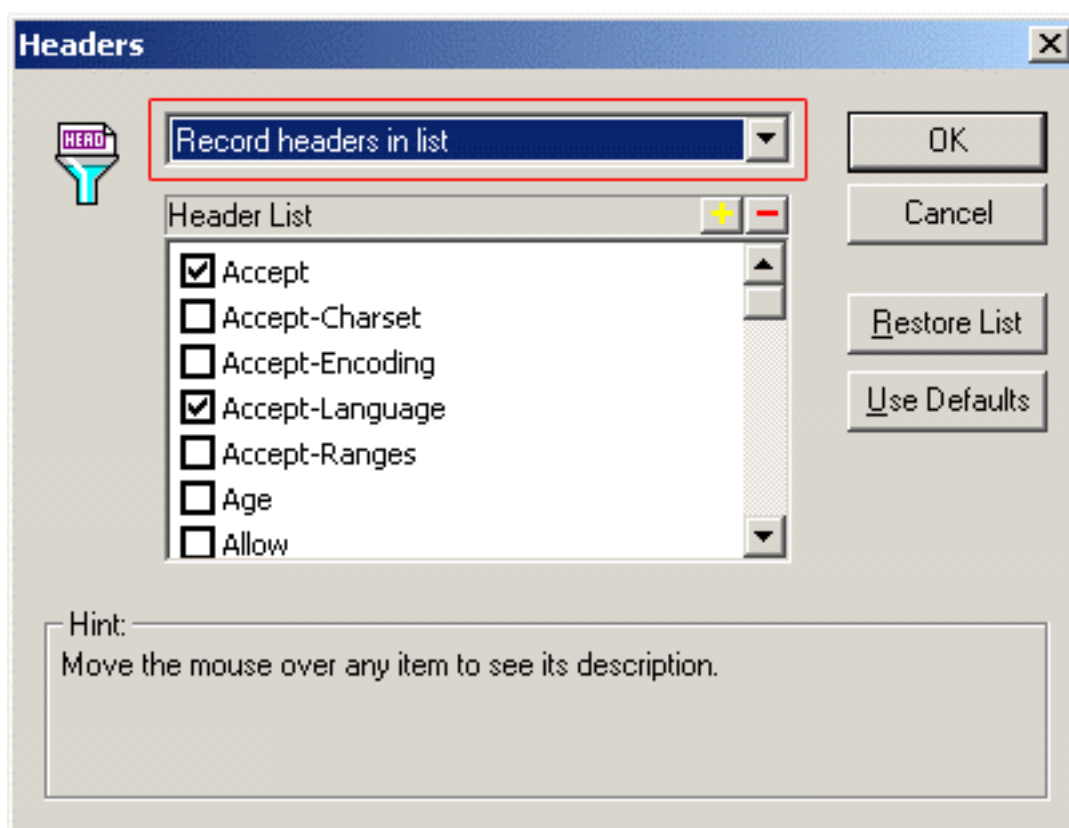
Figure 4.38: Advanced URL

5) Set the Advanced options: Select from menu **Tools > Recording Options > HTTP Properties**.

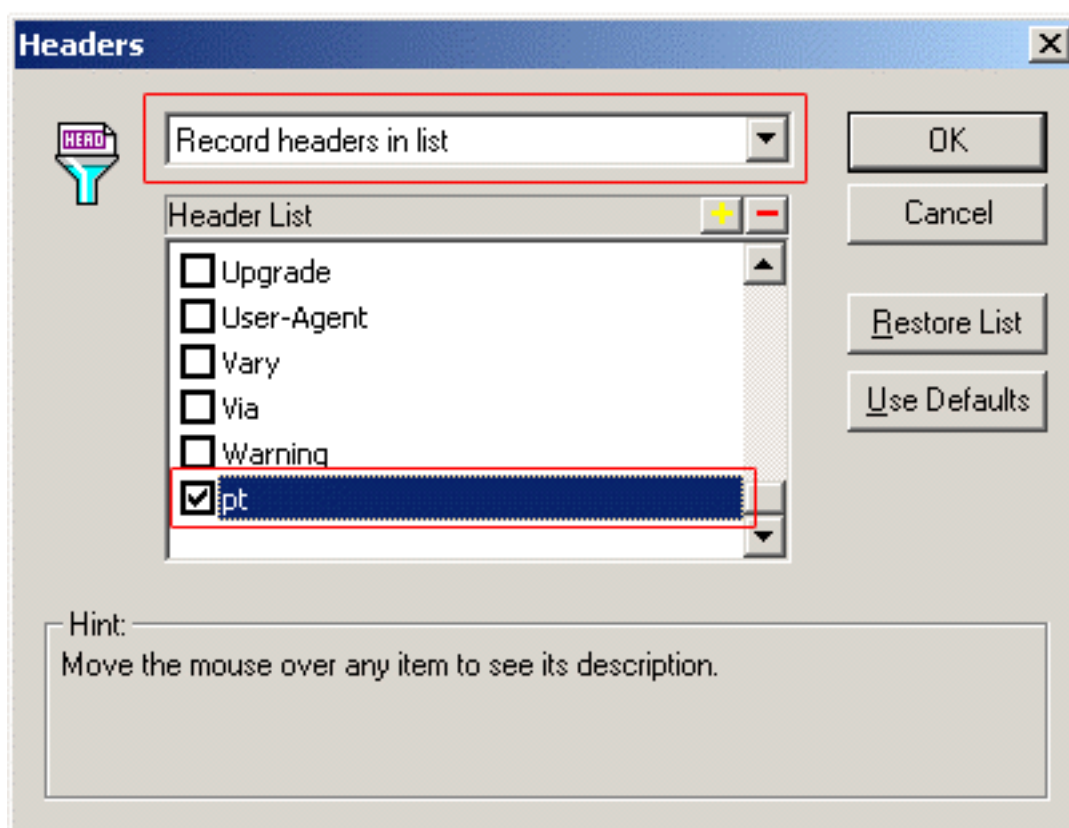
In the Recording Options dialog box, uncheck the **Reset context for each action** option, as shown in the following figure.

Figure 4.39: Recording Options

Click the **Headers** button in the same tab, then select the **Record headers in list** from the dropdown list box, and then check the **Accept** and the **Accept-Language** checkboxes, as shown in the following figure.

Figure 4.40: Headers

Click the "+" sign to add a Header List, as shown in the following figure.

Figure 4.41: Headers

Note: LoadRunner supports Apeon for PowerBuilder 2013 to do pressure tests, but a header "ProtocolMode" should be added first.

4.3.4.5 Modifying Scripts

Parameterize scripts of SessionID:

1. Search the servlet keyword in the scripts, add the following codes to the line previous to the line where the second servlet appears, so as to capture the current SessionID.

```
web_reg_save_param("SessionID", "LB=ID =", "RB=\r\n", LAST);
```

2. Search all the remaining servlet statements, modify the parameters starting with "Body=" in the following way: Find the location of "Session-ID =", replace the recorded value of SessionID with the character string "{SessionID}", for example,

Replace

```
"Session-ID = -318005152\r\n"
```

with

```
"Session-ID = {SessionID}\r\n"
```

Take the following block in red as an example:

```

web_custom_request("apeon.weblibrary.AXDispatcher_6",
"URL=http://172.17.1.108:8080/servlet/apeon.weblibrary.AXDispatcher",
"Method=POST",
"Resource=1",
"Referer=",
"EncType=",
"Body="
"\x1F\x8B\x08\x00\x00\x00\x00\x00\x00\x0B"
"ST"
"\x16"
"b0a0"
"\x06"
"b"
"\x0B\x06"
"K"
"\x06"
"C"
"\x06"
"3"
"\x06"
"# "
"\x06"
"S"
"\x06"
"1"
"\x86\x00"
"†T"
"\x86"
" "
"\x86"
"4†| ¨È#È#Ç"
"\x90\x0C\x14\x01\x01"
"1 fb"
"\x00\x00\x12\x02"
"½#8"
"\x00\x00\x00"
"-----apeon data\r\n"
"Name = Kill Session\r\n"
"Session-ID = {SessionID}\r\n"
"-----apeon data\r\n"
"D"
"\x00\x00\x00"
,
LAST);

```

4.3.4.5.1 Additional steps for Update operation

For Update operation, the script parameterization should meet the following three requirements:

- Parameterization of SessionID (which has already been described above)
- Parameterization of SQL statements (which will be described below)
- Add the Commit request to the end of each Update request, that is, move the Commit request in the recorded scripts from end.c to action.c.

4.3.4.5.2 Parameterization of SQL statements

1. The recorded SQL statements are as follows:

```

"UpDateSQL_1 = update \"PERF_TEST1\" set \"depid\" =
1,\"code\" = 'modify1',\"name\" = 'modify1',\"born\" = '2006-09-04
14:35:12.843',\"age\" = 1,\"salary\" = 1 where \"id\" = 0;update
\"PERF_TEST1\" set \"depid\" = 1,\"code\" = 'modify1',\"name\" =
'modify1',\"born\" = '2006-09-04 14:35:12.843',\"age\" =
1,\"salary\" = 1 where \"id\" = 1;update \"PERF_TEST1\" set
\"depid\" = 1,\"code\" = 'modify1',\"name\" = 'modify1',\"born\" =
'2006-09-04 14:35:12.843',\"age\" = 1,\"salary\" = 1 where \"id\"
= 2;update \"PERF_TEST1\" set \"depid\" = 1,\"code\" =
'modify1',\"name\" = 'modify1',\"born\" = '2006-09-04
14:35:12.843',\"age\" = 1,\"salary\" = 1 where \"id\" = 3;update
\"PERF_TEST1\" set \"depid\" = 1,\"code\" = 'modify1',\"name\"
= 'modify1',\"born\" = '2006-09-04 14:35:12.843',\"age\" =
1,\"salary\" = 1 where \"id\" = 4;update \"PERF_TEST1\" set
\"depid\" = 1,\"code\" = 'modify1',\"name\" = 'modify1',\"born\" =
'2006-09-04 14:35:12.859',\"age\" = 1,\"salary\" = 1 where \"id\"
= 5;update \"PERF_TEST1\" set \"depi
d\" = 1,\"code\" = 'modify1',\"name\" =
'modify1',\"born\" = '2006-09-04 14:35:12.859',\"age\" =
1,\"salary\" = 1 where \"id\" = 6;update \"PERF_TEST1\" set
\"depid\" = 1,\"code\" = 'modify1',\"name\" = 'modify1',\"born\" =
'2006-09-04 14:35:12.859',\"age\" = 1,\"salary\" = 1 where \"id\"
= 7;update \"PERF_TEST1\" set \"depid\" = 1,\"code\" =
'modify1',\"name\" = 'modify1',\"born\" = '2006-09-04
14:35:12.859',\"age\" = 1,\"salary\" = 1 where \"id\" = 8;update
\"PERF_TEST1\" set \"depid\" = 1,\"code\" = 'modify1',\"name\" =
'modify1',\"born\" = '2006-09-04 14:35:12.859',\"age\" =
1,\"salary\" = 1 where \"id\" = 9\r\n

```

- To make the field value change every time the same user executes, you need to parameterize the constant after the field: “modify1” in the above example.
- To ensure that the different virtual user modify different records, you must parameterize the id value after the Where keyword.

For this purpose, at least two parameters should be set: “Modified” and “ID”. To parameterize fields of number type and date type, it is also necessary to set the new parameters. In this example, the type of parameter “Modified” is iteration number, and the type of parameter “id” is UserID.

2. In scripts, for most field values, you must perform the following two replacements in SQL statements.

- " Replace "modify1" with "{modified}"
- " Replace "where \"id\" = "(Note: In this example, the last character included in the quotation mark must be a space) with "where \"id\" = {id}"

If the text to be replaced is split and displayed in two lines, for example, "modify1" is displayed as "modif" and "y1" in two separated lines, you need to manually modify or programmatically replace it, otherwise transaction failure will occur when there are many concurrent user access. Make sure that every SQL statement is correctly replaced.

```

.....,\"col8\" = '{modified}',\"col9\" = 'modif
\"y1',\"col10\" = 'modify1' where \"id\" = {id}06;.....

```

3. The parameterized SQL statements are as follows:

```

UpDateSQL_1 = update \"PERF_TEST1\" set \"depid\" = 1,\"code\" =
'{modified}',\"name\" = '{modified}',\"born\" = '2006-09-04
11:25:12.859',\"age\" = 1,\"salary\" = 1 where \"id\" =
{id}0;update \"PERF_TEST1\" set \"depid\" = 1,\"code\" =
'{modified}',\"name\" = '{modified}',\"born\" = '2006-09-04
11:25:12.859',\"age\" = 1,\"salary\" = 1 where \"id\" =
{id}1;update \"PERF_TEST1\" set \"depid\" = 1,\"code\" =
'{modified}',\"name\" = '{modified}',\"born\" = '2006-09-04
11:25:12.859',\"age\" = 1,\"salary\" = 1 where \"id\" =
{id}2;update \"PERF_TEST1\" set \"depid\" = 1,\"code\" =
'{modified}',\"name\" = '{modified}',\"born\" = '2006-09-04
11:25:12.875',\"age\" = 1,\"salary\" = 1 where \"id\" =
{id}3;update \"PERF_TEST1\" set \"depid\" = 1,\"code\" =
'{modified}',\"name\" = '{modified}',\"born\" = '2006-09-04
11:25:12.875',\"age\" = 1,\"salary\" = 1 where \"id\" =
{id}4;update \"PERF_TEST1\" set \"depid\" = 1,\"code\" =
'{modified}',\"name\" = '{modified}',\"born\" = '2006-09-04
11:25:12.875',\"age\" = 1,\"salary\" = 1 where \"id\" =
{id}5;update \"PERF_TEST1\" set \"depid\" = 1,\"code\" =
'{modified}',\"name\" = '{modified}',\"born\" = '2006-09-04
11:25:12.875',\"age\" = 1,\"salary\" = 1 where \"id\" =
{id}6;update \"PERF_TEST1\" set \"depid\" = 1,\"code\" =
'{modified}',\"name\" = '{modified}',\"born\" = '2006-09-04
11:25:12.875',\"age\" = 1,\"salary\" = 1 where \"id\" =
{id}7;update \"PERF_TEST1\" set \"depid\" = 1,\"code\" =
'{modified}',\"name\" = '{modified}',\"born\" = '2006-09-04
11:25:12.890',\"age\" = 1,\"salary\" = 1 where \"id\" =
{id}8;update \"PERF_TEST1\" set \"depid\" = 1,\"code\" =
'{modified}',\"name\" = '{modified}',\"born\" = '2006-09-04
11:25:12.890',\"age\" = 1,\"salary\" = 1 where \"id\" = {id}9\r\n"

```

4. When playback the scripts after replacement, the SQL statements executed are as follows:

```

UpDateSQL_1 = update "PERF_TEST1" set "depid" = 1,"code" =
'modify1',"name" = 'modify1',"born" = '2006-09-04
11:25:12.859',"age" = 1,"salary" = 1 where "id" =
10;update "PERF_TEST1" set "depid" = 1,"code" =
'modify1',"name" = 'modify1',"born" = '2006-09-04
11:25:12.859',"age" = 1,"salary" = 1 where "id" =
11;update "PERF_TEST1" set "depid" = 1,"code" =
'modify1',"name" = 'modify1',"born" = '2006-09-04
11:25:12.859',"age" = 1,"salary" = 1 where "id" =
12;update "PERF_TEST1" set "depid" = 1,"code" =
'modify1',"name" = 'modify1',"born" = '2006-09-04
11:25:12.875',"age" = 1,"salary" = 1 where "id" =
13;update "PERF_TEST1" set "depid" = 1,"code" =
'modify1',"name" = 'modify1',"born" = '2006-09-04
11:25:12.875',"age" = 1,"salary" = 1 where "id" =
14;update "PERF_TEST1" set "depid" = 1,"code" =
'modify1',"name" = 'modify1',"born" = '2006-09-04
11:25:12.875',"age" = 1,"salary" = 1 where "id" =
15;update "PERF_TEST1" set "depid" = 1,"code" =
'modify1',"name" = 'modify1',"born" = '2006-09-04
11:25:12.875',"age" = 1,"salary" = 1 where "id" =
16;update "PERF_TEST1" set "depid" = 1,"code" =
'modify1',"name" = 'modify1',"born" = '2006-09-04
11:25:12.875',"age" = 1,"salary" = 1 where "id" =
17;update "PERF_TEST1" set "depid" = 1,"code" =
'modify1',"name" = 'modify1',"born" = '2006-09-04
11:25:12.890',"age" = 1,"salary" = 1 where "id" =
18;update "PERF_TEST1" set "depid" = 1,"code" =
'modify1',"name" = 'modify1',"born" = '2006-09-04
11:25:12.890',"age" = 1,"salary" = 1 where "id" = 19

```

5. In the iterative operations, the SQL statements executed at the third time are as follows:

```
UpDateSQL_1 = update "PERF_TEST1" set "depid" = 1,"code" =
'modify3',"name" = 'modify3',"born" = '2006-09-04
11:25:12.859',"age" = 1,"salary" = 1 where "id" =
10;update "PERF_TEST1" set "depid" = 1,"code" =
'modify3',"name" = 'modify3',"born" = '2006-09-04
11:25:12.859',"age" = 1,"salary" = 1 where "id" =
11;update "PERF_TEST1" set "depid" = 1,"code" =
'modify3',"name" = 'modify3',"born" = '2006-09-04
11:25:12.859',"age" = 1,"salary" = 1 where "id" =
12;update "PERF_TEST1" set "depid" = 1,"code" =
'modify3',"name" = 'modify3',"born" = '2006-09-04
11:25:12.875',"age" = 1,"salary" = 1 where "id" =
13;update "PERF_TEST1" set "depid" = 1,"code" =
'modify3',"name" = 'modify3',"born" = '2006-09-04
11:25:12.875',"age" = 1,"salary" = 1 where "id" =
14;update "PERF_TEST1" set "depid" = 1,"code" =
'modify3',"name" = 'modify3',"born" = '2006-09-04
11:25:12.875',"age" = 1,"salary" = 1 where "id" =
15;update "PERF_TEST1" set "depid" = 1,"code" =
'modify3',"name" = 'modify3',"born" = '2006-09-04
11:25:12.875',"age" = 1,"salary" = 1 where "id" =
16;update "PERF_TEST1" set "depid" = 1,"code" =
'modify3',"name" = 'modify3',"born" = '2006-09-04
11:25:12.875',"age" = 1,"salary" = 1 where "id" =
17;update "PERF_TEST1" set "depid" = 1,"code" =
'modify3',"name" = 'modify3',"born" = '2006-09-04
11:25:12.890',"age" = 1,"salary" = 1 where "id" =
18;update "PERF_TEST1" set "depid" = 1,"code" =
'modify3',"name" = 'modify3',"born" = '2006-09-04
11:25:12.890',"age" = 1,"salary" = 1 where "id" = 19
```

In this way, the value changes every time the same user executes an Update operation.

4.3.4.6 Playing back Script to test the correctness of scripts

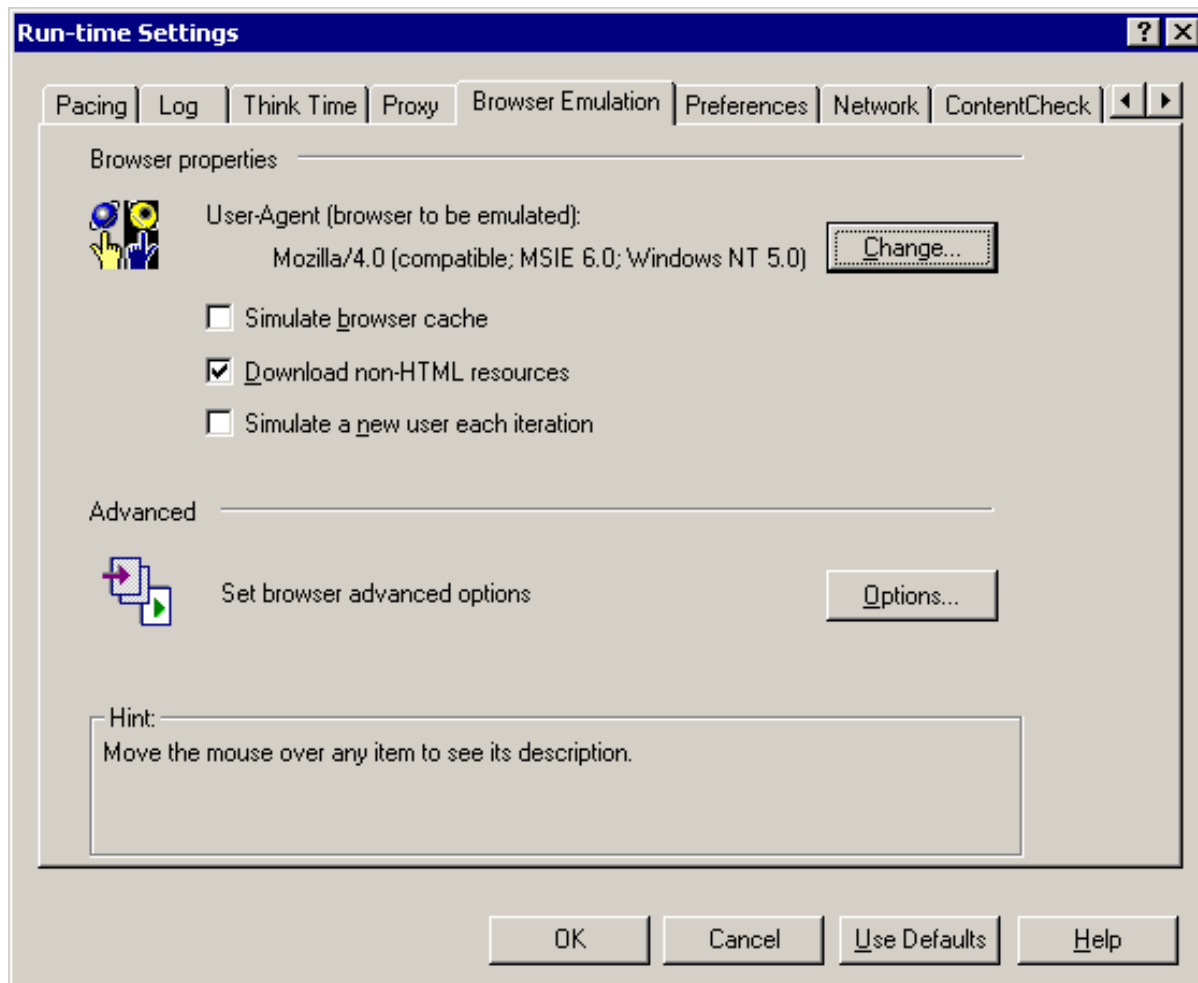
Before playing back scripts, set as follows from the menu: **Vuser > Run-Time Settings > Browser Emulation > Options > Check new resources when simulating browser cache = Yes.**

Check the log of AEM to see if the log of recorded scripts is the same as the log of playback (SessionID values can be different), otherwise, go back to the previous step to check and modify the scripts and settings again.

4.3.4.7 Setting Scenarios

- 1) Select from menu **Tools > Create controller scenario;**
- 2) Set the schedule of scenario according to your needs;
- 3) Configure the Parameter Settings for Scenario:

Navigate to **Browser Emulation**, and then uncheck then the **Simulate browser cache** and the **Simulate a new user each iteration** checkboxes, and check the **Download non-HTML resources** checkbox checked, as shown in the following figure;

Figure 4.42: Run-times Settings

4.3.4.7.1 Additional steps for Update operation

Set the Update operation being committed when 10 virtual users access concurrently. Make sure that the IDs of virtual users are the successive integers starting from 1. For example, 1~10. and keep running for 5 minutes.

When you run the scenario, ensure that it runs correctly without any error or error messages in AEM log, and check the corresponding tables in the database and make sure the values of records (id 10-109) have been changed.

4.3.4.8 Running Scenarios

Select to run the scenario and the test report will be generated.

4.3.5 Appendix

4.3.5.1 Modifying the scripts of NVO

Follow instructions below to modify scripts of NVO:

1) Place the following statement before the request script statement used to acquire Serverhandle.

```
web_reg_save_param("Serverhandle","LB=Server-Handle =", "RB=\r\n",LAST);
```

2) Place the following two statements after the request script statement used to acquire Serverhandle.

```
lr_output_message( "{Serverhandle}");
lr_output_message(lr_eval_string( "{Serverhandle}"));
```

3) Place the following statement before the request script statement used to acquire NVOhandle.

```
web_reg_save_param( "NVOhandle", "LB=Handle =", "RB=\r\n", LAST);
```

4) Place the following two statements after the request script statement used to acquire Serverhandle.

```
lr_output_message( "NVOhandle");
lr_output_message(lr_eval_string( "{NVOhandle}"));
```

4.3.5.2 Modifying the scripts of EJB/JavaBean

Follow instructions below to modify scripts of EJB & JavaBean:

1) Place the following statement before the request script statement used to acquire Serverhandle.

```
web_reg_save_param( "Serverhandle", "LB=Proxy-Handle =", "RB=\r\n", LAST);
```

2) Place the following two statements after the request script statement used to acquire Serverhandle.

```
lr_output_message( "{Serverhandle}");
lr_output_message(lr_eval_string( "{Serverhandle}"));
```

3) Place the following statement before the request script statement used to acquire EJBhandle.

```
web_reg_save_param( "EJBhandle", "LB=EJBBean-Handle =", "RB=\r\n", LAST);
```

4) Place the following two statements after the request script statement used to acquire EJBhandle.

```
lr_output_message( "EJBhandle");
lr_output_message(lr_eval_string( "{EJBhandle}"));
```

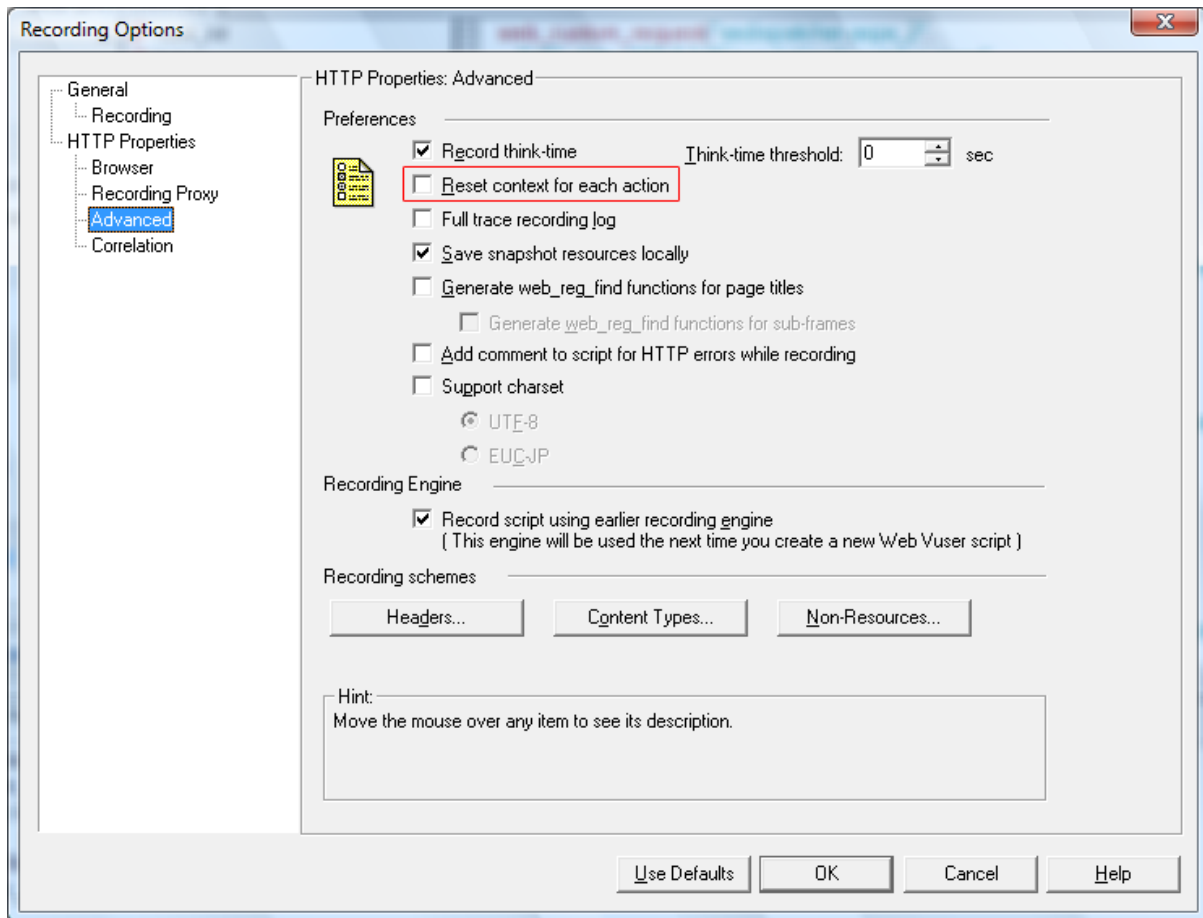
4.3.5.3 Troubleshooting

4.3.5.3.1 "The session does not exist" error

Phenomena: Scripts run correctly after it being recorded and modified, but after a while or after the server is restarted, the following error messages appear in the log of Apeon if playing back the script:

```
1150101302078:0 [06-06-12 16:35:02.078]
[com.appeon.server.services.controller.JRouterImpl (call())] The
session does not exist."
```

Solution: Check and make sure that the Reset context for each action option is unchecked, and then record the scripts again. In this way, scripts will remain usable even after application server is restarted.

Figure 4.43: Recording Options

4.3.5.3.2 Errors appear when playing back scripts with LoadRunner 8.0

Phenomena: The following error messages Error messages will appear in the ApeonServer or ApeonError log when scripts playback with LoadRunner 8.0 version:

```
1154707726562:0 [06-08-04 09:08:46.562]
[com.appeon.server.services.controller.JRouterImpl (call())] The
session does not exist.
```

Solution: It is recommended to use LoadRunner 7.5.1 to test applications in English. (LoadRunner 7.5.1 does not support applications in Chinese.)

If you use LoadRunner 8.0 to test scripts in Apeon Web applications, the server log will report errors frequently. While no error will occur with LoadRunner 7.51 under the same process.

4.3.5.3.3 The value of sessionID is null

Phenomena: If you use the following statements to debug the value of SessionID, the SessionID value will be null in the Execution Log after scripts playback.

```
lr_output_message(lr_eval_string("SessionID----->"));
lr_output_message(lr_eval_string("{SessionID}"));
```

Solution: The function (as follows)

```
web_reg_save_param("SessionID", "LB=ID =", "RB=\r\n", LAST);
```

to obtain Session ID should be placed before the second HTTP request. Do not place it before the first request.

```
web_custom_request("AXDispatcher.aspx_2", "URL=http://172.17.1.29/servlet/ AXDispa
tcher",
"Method=POST",
"Resource=1",
"RecContentType=text/plain",
"Referer=",
"Binary=1",
"EncType=",
"Body="
"\x1F\x8B\x08\x00\x00\x00\x00\x00\x00\x0B"
"SPf`"
"\xD0"
"cHd("
"\x00\xC2"
"T"
"\x86"
"| "
"\x86"
"<"
"\x86"
"x"
"\x86"
"d "
"\x9D\x02\xE4\xC5\x03"
"q"
"\x05"
"P."
"\x17"
("("
"\x97\x03"
"d"
"\x17\x03"
"E"
"\x12\x81"
"\ "
"\x8C\x0C"
"@ "
"\xC0\x02\xC4"
"L"
"\x0C\x00\x9D\x84xA2xD6"
"? "
"\x00\x00\x00"
", "
LAST);
```

4.3.5.3.4 Error message appears in script playback

Phenomena: After recording, modifying, and playing back script, the following messages appear in the Execution log.

```
vuser_init.c(236): Error: No match found for the requested
parameter "SessionID". If the data you want to save exceeds 256
bytes, use web_set_max_html_param_len to increase the parameter size
vuser_init.c(236): Error: The above "not found" error(s) may be
explained by header and body byte counts being 0 and 0, respectively.
Abort was called from an action
```

Solution: This is probably caused by the Web cache setting. If you will not test Web cache, be sure to cancel the settings for simulating cache in the Run-Time Settings, by selecting

menu: **Vuser > Run-Time Settings > Browser Emulation > Options > Check for newer resources when simulating browser cache = Yes.**

4.3.5.3.5 Error message in Apeon Log

Phenomena: After script playback, set the pacing>1 and playback again, the following error messages appear in the ApeonServer log for AEM:

```
1154707726562:0 [06-08-04 09:08:46.562]
[com.appeon.server.services.controller.JRouterImpl (call())]
The session does not exist.
1154707726593:0 [06-08-04 09:08:46.593]
[com.appeon.server.services.controller.JRouterImpl (call())]
The session does not exist.
1154707726625:0 [06-08-04 09:08:46.625]
[com.appeon.server.services.controller.JRouterImpl (call())]
The session does not exist.
1154707726687:0 [06-08-04 09:08:46.687]
[com.appeon.server.services.controller.JRouterImpl (call())]
The session does not exist.
1154707726718:0 [06-08-04 09:08:46.718]
[com.appeon.server.services.controller.JRouterImpl (call())]
The session does not exist.
```

Solution: Make sure that the Simulate a new user each iteration option for Run-Time Settings is unchecked.

4.3.5.3.6 Failed to parameterize scripts

Phenomena: After scripts are recorded, the plain text cannot be found in all web_custom_request, for example:

```

web_custom_request("apeon.weblibrary.AXDispatcher3",
  "URL=http://172.17.1.29/servlet/apeon.weblibrary.AXDispatcher",
  "Method=POST",
  "Resource=1",
  "RecContentType=text/plain",
  "Referer=",
  "Binary=1",
  "EncType=",
  "Body="
  "\\x1F\\x8B\\x08\\x00\\x00\\x00\\x00\\x00\\x00\\x0B"
  "kQ"
  "\\x16"
  "a"
  "\\xD0"
  "e"
  "\\xB0"
  "d0c0e0"
  "\\x07\\xD3\\xE6\\x0C"
  "&"
  "\\x0C\\xC6\\x0C\\x5C\\xC5\\x0C\\x85\\x0C"
  "g"
  "\\x0C\\xC9\\x0C\\x89\\x0C\\x5C\\x0C\\xFF\\x19\\x19\\x98\\x18"
  "Y"
  "\\x18"
  "8"
  "\\x81"
  "ln"
  "\\x06\\x1E\\x06"
  "^"
  "\\x06"
  ">"
  "\\x06\\x10\\x90\\x00"
  "b&"
  "\\x06\\x00\\xE6\\x89"
  "_xB"
  "\\x00\\x00\\x00"
  ",
  LAST);

```

Solution: Before running the scenario, make sure that you have select Test Mode in the Run Mode setting of AEM and that you have set the log mode to Standard. Then the plain text will appear as the red fonts shown below.

```

web_custom_request("apeon.weblibrary.AXDispatcher3",
  "URL=http://172.17.1.29/servlet/apeon.weblibrary.AXDispatcher",
  "Method=POST",
  "Resource=1",
  "RecContentType=text/plain",
  "Referer=",
  "Binary=1",
  "EncType=",
  "Body="
  "\\x1F\\x8B\\x08\\x00\\x00\\x00\\x00\\x00\\x00\\x0B"
  "kQ"
  "\\x16"
  "c"
  "\\xD0"
  "e0d0a0g0c0"
  "\\x05"
  "BK"
  "\\x06"
  "# "
  "\\xCF\\x90\\x81\\xAB\\x98\\xA1\\x90"
  "!"
  "\\x87"
  "!"
  "\\x99"
  "!"
  "\\x91\\x81\\x8B\\xE1"
  "?#"
  "\\x03\\x13"
  "#"
  "\\x0B\\x03"
  " "
  "\\x90\\xC9\\xCD\\xC0\\xC3\\xC0\\xCB\\xC0\\xC7\\x00\\x02"
  "R@"
  "\\xCC\\xC4\\x00\\x00"
  "HO"
  "\\xC9"
  "&D"
  "\\x00\\x00\\x00"
  "-----apeon data\r\n"
  "Name = Connect\r\n"
  "Session-ID = -1476559241\r\n"
  "-----apeon data\r\n"
  "P"
  "\\x00\\x00\\x00"
  " ",
  LAST);

```

4.3.5.3.7 Out of memory error and application server shut down

Phenomena: On the Solaris platform, WebLogic reports the out of memory error, and then shuts down. This is because the physical memory of the server is too low.

Solution: Increase the virtual memory of server. For Windows, set the virtual memory to 2G; for Solaris, set the swap space to 2G.

The commands to set swap on Solaris are

```

Mkfile /beaswap
swap -a /beaswap

```

To add new swap space, this command must be run every time a Solaris server is restarted.

4.3.5.3.8 Field values do not change after parameterization and playback

Phenomena A: Corresponding field values in the records do not change after SQL parameterization and scripts playback, using ASA database.

Solution A:

Steps to reproduce:

1. Record in the Test Mode: **DataWindow > Updating > Change Employee Salary** function.

```
"UpDateSQL_1 = update \"employee\" set \"salary\" = ? where \"emp_id\" =?....."
```

2. In the record scripts, create a new parameter “Salary” for incremental change, and parameterize SQL statements, as shown below:

```
"UpDateSQL_1 = update \"employee\" set \"salary\" = {salary} where  
\"emp_id\" = 105....."
```

3. Playback scripts.

Phenomena B: Open another URL, the value of salary in records such as \"emp_id\" = 105 are found unchanged.

Solution B: The connection parameters (fonts in red) should be set in PowerBuilder for ASA database, then deploy the application source code and record scripts again.

```
ConnectionString='DSN=ApeonSample;UID=dba;PWD=sql',DisableBind=1
```

4.3.5.3.9 Runtime errors causing scenario failure

For Apeon DOT NET version, after errors occur in running, the scenario cannot run correctly as before.

Phenomena: The following errors are reported in the server log:

```
2006-08-17 14:41:36.609 : Object reference not set to an instance of an object.  
at Apeon.Server.Commands.CommitCommand.Execute()  
at Apeon.Server.Commands.Command.ConstructAndExecute(CommandData commandData)  
at Apeon.Server.Services.Controller.JRouterImpl.ExecuteInTransaction  
(CommandData commandData)  
at Apeon.Server.Services.Controller.JRouterImpl.ExecuteCommand  
(HttpResponse response, CommandData superCommand, SessionAccessInfo session)  
at Apeon.Server.Services.Controller.JRouterImpl.Call(CommandData  
superCommand, HttpRequest request, HttpResponse response)  
at Apeon.Server.Services.Controller.JRouterImpl.Call(Int32  
clientType, Object requestData, Hashtable clientContext)
```

LoadRunner will report the following error:

```
Action1.c(190): Error: Page download timeout (120 seconds) has expired.
```

Solution: Restart IIS, SQL Server, and LoadRunner.

Check the PowerBuilder source code and change `autocommit=false` to `autocommit=true`, or move the Commit operation after the Retrieve operation, so as to ensure the commit operation will be executed for every Retrieve.

4.3.5.3.10 Transactions failed

Many transactions in test fail when there are large amount of concurrent access with Update or Retrieve.

Phenomena: The script playback is successful in Virtual User Generator, and the logs in AEM report no error. But the transaction fails when there are large amount of concurrent access.

Solution: Move the Commit request after the Update request, that is, move the Commit request in recorded scripts from end.c to action.c.

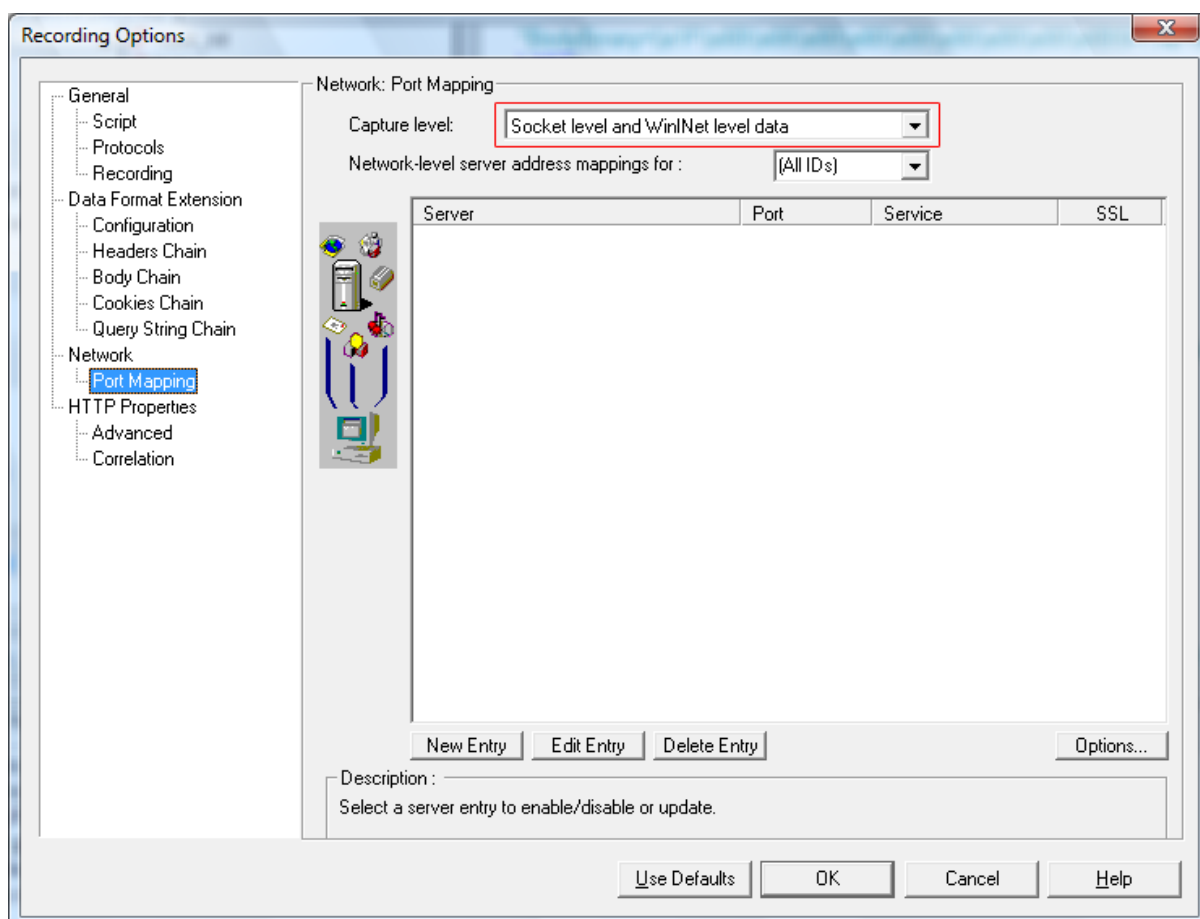
4.3.5.3.11 Unable to connect to remote servers

Phenomena: Load runner is not able to generate the scripts after record and appear below error in log:

(Service=) NOT PROXIED! (REASON: Unable to connect to remote server: rc = -1 , le = 0)

Solution: Go to [Tools > Recording options] and look at port mapping. Select " socket level and wininet level data" for Capture level. See below image.

Figure 4.44: Port Mapping

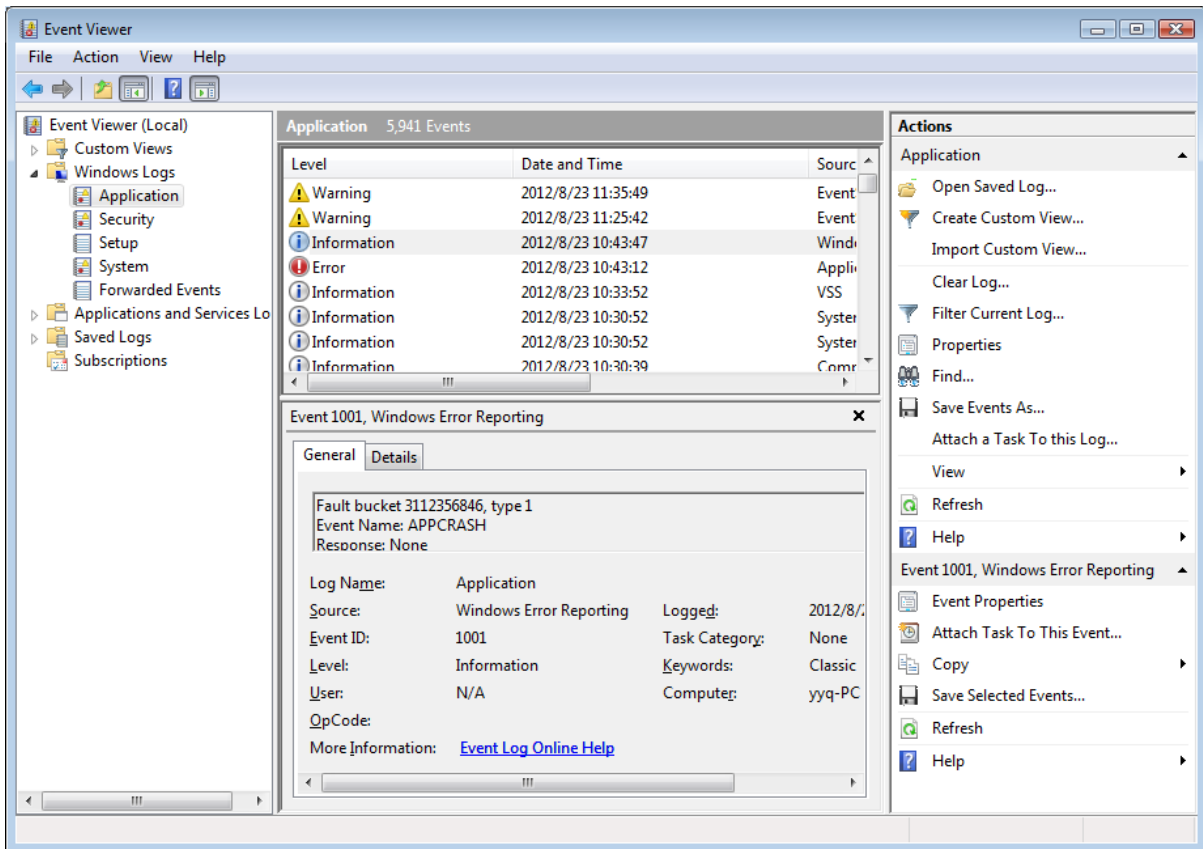


4.4 Analyzing log files

4.4.1 Analyzing Windows application log files

Check whether there are log files about the application server in the Event Viewer, then go to the application server web site to get the detailed solution to solve those Errors.

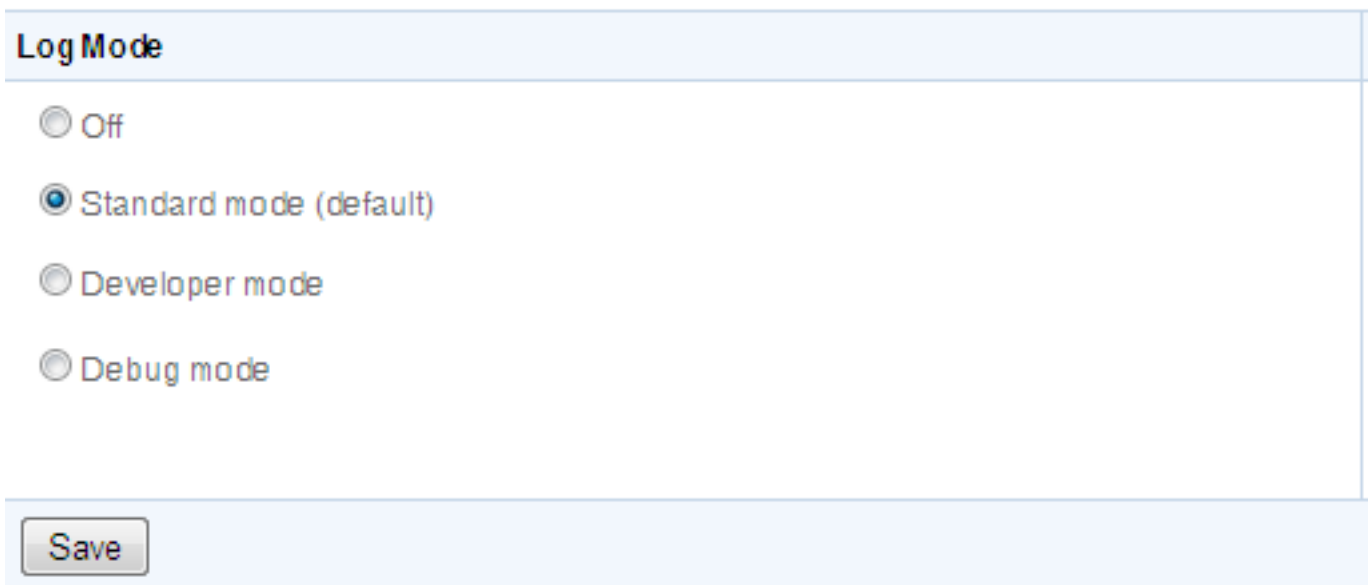
Figure 4.45: Event Viewer



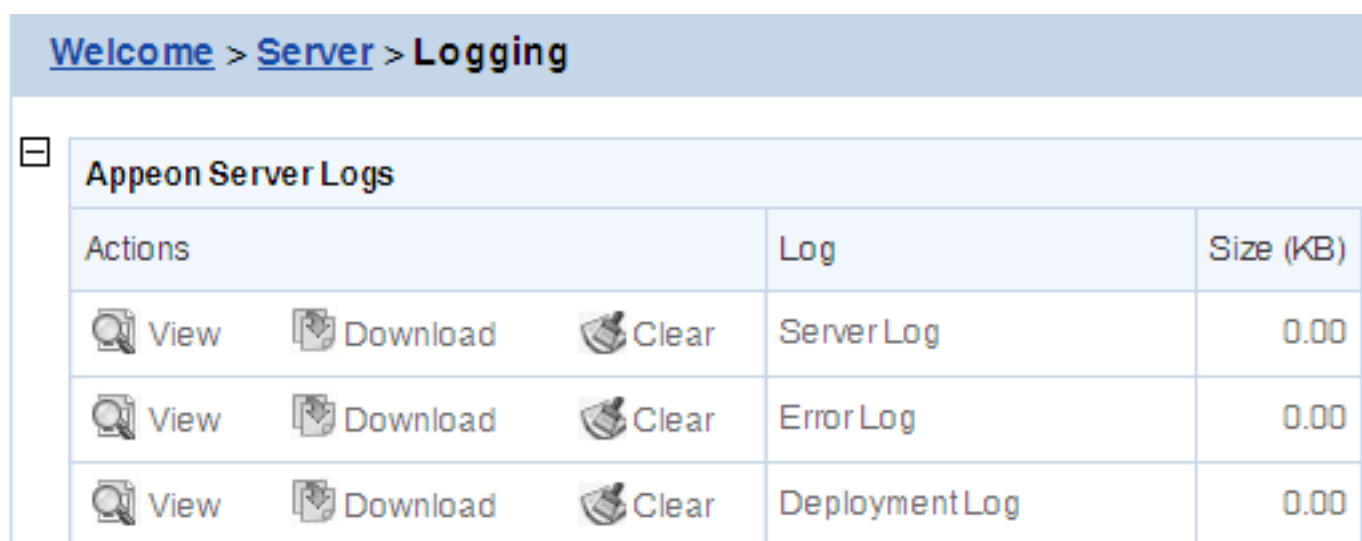
4.4.2 Analyzing Apeon Server log files

Step 1 -- Select Debug Mode as the Log Mode.

Figure 4.46: Event Viewer



Step 2 -- View the ApeonServer and ApeonError.log.

Figure 4.47: Log Viewer


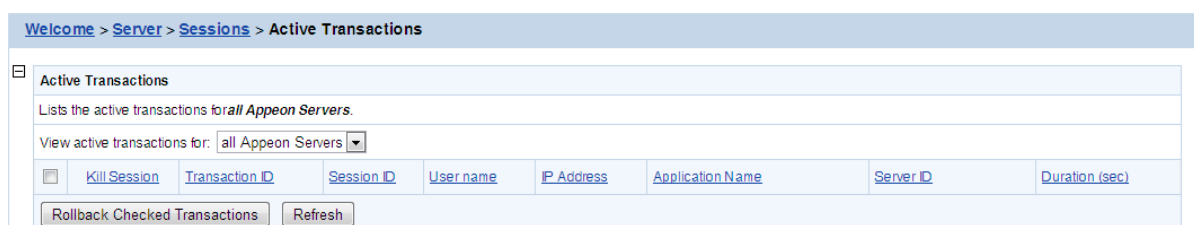
The screenshot shows a web interface with a breadcrumb trail: [Welcome](#) > [Server](#) > [Logging](#). Below the breadcrumb is a section titled "Apeon Server Logs" with a collapse icon. It contains a table with three columns: "Actions", "Log", and "Size (KB)".

Actions	Log	Size (KB)
View Download Clear	Server Log	0.00
View Download Clear	Error Log	0.00
View Download Clear	Deployment Log	0.00

Read ApeonServer.log and find out operations which are time consuming and redundant.

4.4.3 Analyzing active transaction log

Step 1: Go to Active Transactions screen and select the intended Transaction ID.

Figure 4.48: Active Transactions


The screenshot shows a web interface with a breadcrumb trail: [Welcome](#) > [Server](#) > [Sessions](#) > [Active Transactions](#). Below the breadcrumb is a section titled "Active Transactions" with a collapse icon. It contains a table with a header row and a body row. The header row has columns: Kill Session, Transaction ID, Session ID, User name, IP Address, Application Name, Server ID, and Duration (sec). The body row has a checkbox and a button labeled "Rollback Checked Transactions".

<input type="checkbox"/>	Kill Session	Transaction ID	Session ID	User name	IP Address	Application Name	Server ID	Duration (sec)
<input type="checkbox"/>	Rollback Checked Transactions Refresh							

Step 2: Go to Active Transaction Log, you can view more details about what this transaction acted on the database recently.

Figure 4.49: Active Transaction Log

Active Transaction Log				
Display the detail information of the transaction.				
Session ID	Transaction ID	Logged Time	Action	Details
2061427769	sqlca	2012-04-28 00:54:49.77	Datawindow retrieve start	SQLWrapper[SQLType=Select, SQL=SELECT "department"."dept_id", "department"."dept_name", "department"."dept_head_id" FROM "department" ORDER BY "department"."dept_id" ASC, SubSections=[SELECT "department"."dept_id", "department"."dept_name", "department"."dept_head_id" FROM "department" ORDER BY "department"."dept_id" ASC]]
2061427769	sqlca	2012-04-28 00:54:49.77	Datawindow retrieve end	✔ The Datawindow retrieve has been executed successfully.
2061427769	sqlca	2012-04-28 00:54:51.807	Embedded SQL start	SQLWrapper[SQLType=Insert, SQL=INSERT Into department (dept_id, dept_name, dept_head_id) Values (1000 , 'ApeonTest', 100), SubSections=[INSERT Into department (dept_id, dept_name, dept_head_id) Values (1000 , 'ApeonTest', 100)]]
2061427769	sqlca	2012-04-28 00:54:51.807	Embedded SQL end	✔ The Embedded SQL has been executed successfully.
2061427769	sqlca	2012-04-28 00:54:52.150	Embedded SQL start	SQLWrapper[SQLType=Select, SQL=SELECT dept_name From department Where dept_id = 100, SubSections=[SELECT dept_name From department Where dept_id = 100]]
2061427769	sqlca	2012-04-28 00:54:52.165	Embedded SQL end	✔ The Embedded SQL has been executed successfully.

Check to view the detailed information of the transaction, maybe you can figure out which SQL statements is blocked and then optimize you PB code for Apeon.

4.5 Identifying Performance Bottlenecks of Web Server and Application Server

You can use tools like Load Runner to identify the performance bottlenecks of your web server and application server. Usually you should consider checking these places: server runtime environment, network connectivity conditions, and performance relevant parameter settings (such as timeout settings and cache settings).

Or you can refer to the information provided by your web server and application server vendor, it will help you more accurately locate the performance bottlenecks and make appropriate settings according to your actual workload.

4.6 Identifying Performance Bottlenecks of DB Server

4.6.1 Deadlock analysis

If you are doing the stress test and you find some problems during the test, you should check if there are deadlock of the database before you quite the stress test mode. By the way, if you find the performance problem when doing the database related operation, you should also check the deadlock in database.

Take SQL Server database as an example, if you want to check whether there are deadlocks or not, you can use the following way:

- Execute `sp_lock` in SQL query analyzer. If you find there are 'X' or 'IX' of the Mode field, then it means there are deadlocks. You can find out the deadlocks occurred in which tables by the information in Resource field.
- Execute `sp_who spid` in SQL query analyzer, then you can find out the host name of spid and commands being executed.

4.7 Identifying Performance Bottlenecks of PB application

If your PB application includes poorly written SQL and extensive use of non-datawindow based (direct SQL statements) SELECTs, UPDATEs, DELETEs and INSERTs, of course your application runs slow. Tune the performance of PB application is the last but the most important step. Usually the performance can be obviously improved after modifying the codes of the PB application.

4.7.1 Analyzing performance bottlenecks of PB application

Output time log for the code and find out time-consuming ones during execution. Please refer to the following Scripts and load it into PowerBuilder Application. A log with time interval regarding code will be generated while the object of _log(string arg) is called.

Please check the start time and end time of the code and find out time-consuming ones.

```
string is_LogFile="C:\debug\logservice.log"
string is_workdir="C:\debug\"
long il_LogFileHandle
IF NOT directoryexists(is_workdir) THEN
  createdirectory(is_workdir)
END IF
il_LogFileHandle = FileOpen(is_LogFile,StreamMode!,write!,shared!,append!)
FileWrite(il_LogFileHandle,"~r~n~r~n")
of_log("====Log service initialized====")

public function integer of_log (string as_message);
IF FileExists(is_LogFile) THEN
  IF FileLength(is_LogFile) > 2097152 THEN//2M
    FileClose(il_logfilehandle)
    FileCopy(is_LogFile,is_LogFile+".bak",true)
    FileDelete(is_LogFile)
    il_LogFileHandle = FileOpen(is_LogFile,StreamMode!,write!,shared!,append!)
  END IF
END IF
as_message = "~r~n"+string(now(),"yyyy-mm-dd hh:mm:ss.fff") +as_message
FileWrite(il_logfilehandle,as_message)
return 1
end function
```

5 Tuning: DB Server

5.1 Database

The database performance will be improved from the following aspects:

- Choose proper database driver. Refer to [Recommended database driver](#) in *Database performance settings* for details.
- Set reasonable timeout settings. Refer to [Command Timeout](#) in *Recommended database setting* for details.
- Optimize the table structure.
- Use proper index.
- Optimize SQL statements.

6 Tuning: Excessive Server Calls

6.1 Overview

Excessive server calls in a given operation can create performance issues for that operation on slow and high-latency networks. If you are not familiar with the concept of "server calls", please refer to [Impact of the Internet and slow networks](#) and then proceed with this section.

This section will provide four different techniques including code examples to minimize server calls and thereby optimize the performance of your PowerBuilder application for a WAN or the Internet.

1. Partition transactions utilizing stored procedures
2. Partition non-visual logic utilizing server-side non-visual objects (NVOs)
3. Eliminating Recursive Embedded SQL
4. Group multiple server calls into one "group" call with Apeon Labels

6.2 Technique #1: partitioning transactions via stored procedures

Imagine your PowerBuilder client contains the following code:

```
long ll_rows, i
decimal ldec_price, ldec_qty, ldec_amount

ll_rows = dw_1.retrieve(arg_orderid)
for i = 1 to ll_rows
    dw_1.SetItem(i, "price", dw_1.GetItemDecimal(i, "price")*1.2)
next

if dw_1.update() < 0 then
    rollback;
    return
end if

for i = 1 to ll_rows
    ldec_price = dw_1.GetItemDecimal(i, "price")
    ldec_qty = dw_1.GetItemDecimal(i, "qty")

    if ldec_price >= 100 then
        ldec_amount = ldec_amount + ldec_price*ldec_qty
    end if
end if
Next

ll_rows = dw_2.Retrieve(arg_orderid)
dw_2.SetItem(dw_2.GetRow(), "amount", ldec_amount)

If dw_2.update() = 1 then
    Commit;
else
    rollback;
end if
```

This is not only problematic from a runtime performance perspective since there would be numerous server calls over the WAN, but also it could result in a "long transaction" that would tie up the database resulting in poor database scalability.

The business logic and the data access logic (for saving data) are intermingled. When the first "Update()" is submitted to the database, the related table in the database will be locked until the entire transaction is ended by the "Commit()". The longer a transaction is the longer other clients must wait, resulting in fewer transactions per unit of time.

To improve the performance and scalability of the application, the above code can be partitioned in two steps:

1. First, move the business logic (or as much possible) outside of the transaction. In other words, the business logic should appear either before all Updates of the transaction or after Commit of the transaction. This way the transaction is not tied up while the business logic is executing.
2. Second, partition the transaction whereby all the Updates are moved into a stored procedure. The stored procedure will be executed on the database side and only return the final result. This would eliminate the multiple server calls from the multiple updates to just one server call over the WAN for saving all the data in one shot.

It is generally best to actually divide the original transaction into three segments or procedures: "Retrieve Data", "Calculate" (time-consuming logic), and "Save Data". The "Retrieve Data" procedure retrieves all required data for the calculation. This data usually would be cached in a DataWindow(s) or a DataStore(s). In the "Calculate" procedure, the data cached in DataStore will be used to perform the calculation instead of retrieving data directly from the database. The calculation result would be cached back to a DataStore and then saved to the database by the "Save Data" procedure.

Example of the new PB client code partitioned into three segments and invoking a stored procedure to perform the Updates:

```

long ll_rows, i
decimal ldec_price, ldec_qty, ldec_amount
//Retrieve data
dw_2.Retrieve(arg_orderid)
ll_rows = dw_1.retrieve(arg_orderid)
//Calculate (time-consuming logic)
for i = 1 to ll_rows
    dw_1.SetItem(i, "price", dw_1.GetItemDecimal(i, "price")*1.2)
next

for i = 1 to ll_rows
    ldec_price = dw_1.GetItemDecimal(i, "price")
    ldec_qty = dw_1.GetItemDecimal(i, "qty")

    if ldec_price >= 100 then
        ldec_amount = ldec_amount + ldec_price*ldec_qty
    end if
Next

dw_2.SetItem(dw_2.GetRow(), "amount", ldec_amount)
//Save data
declare UpdateOrder procedure for up_UpdateOrder @OrderID = :arg_orderid,
@amount = :ldec_amount;
execute UpdateOrder;

```

Example of code for the stored procedure to Update the database:


```
create procedure up_UpdateOrder(
@orderid integer,
@amount decimal(18, 2)
)
as
begin
update order_detail set price = price*1.2
where ordered = @orderid

if @@error <> 0
begin
    rollback
    return dba.uf_raiseerror()
end

update orders set amount = @amount
where ordered = @orderid

if @@error <> 0
begin
    rollback
    return dba.uf_raiseerror()
end

commit
end
```

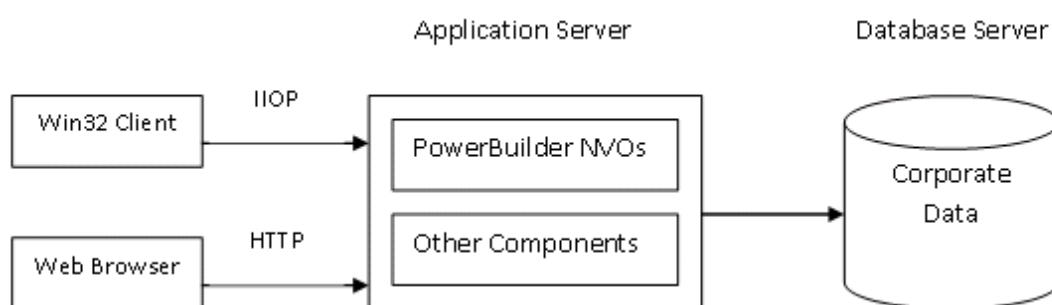
In summary, with the above performance optimization technique, the performance and scalability is improved since the transaction is shorter. The server call-inducing Updates are all implemented on the server-side rather than the client-side, improving the response time. Secondly, moving the business logic out of the transaction further shortens the transaction. If the business logic cannot be moved out of the transaction, one may want to consider implementing the business logic together with the transaction as a stored procedure. In summary, shorter transactions equals better scalability and faster performance.

6.3 Technique #2: partitioning non-visual logic via NVOs

Partitioning non-visual logic and encapsulating it within PowerBuilder NVOs has been a long-time best practice among PowerBuilder developers. What's relatively new, however, is utilizing middleware or application server, such as SAP Sybase EAServer, Microsoft IIS, IBM WebSphere*, Oracle WebLogic*, TmaxSoft JEUS*, or JBoss* to deploy these NVOs to the server (i.e. server-side NVOs) and invoke them from the client over IIOP or HTTP.

** Requires an SAP Sybase plug-in that is purchased separately from SAP or authorized resellers.*

To give you a better idea of what this looks like, the following diagram shows a very high-level architecture of PowerBuilder applications utilizing server-side NVOs when deployed as a Windows Client/Server application as well as an n-tier Web (.NET* or J2EE) application with Appeon for PowerBuilder.

Figure 6.1: Architecture with server-side NVOs

Deploying your non-visual logic as server-side NVOs is an excellent way to boost the performance of your application over a WAN; however, some thought must be given as what to partition. On one hand, consolidating your business logic within NVOs will significantly thin out client-side processing and move all those server call-inducing statements to the server-side running in a low-latency LAN environment. On the other hand, each invocation of the server-side NVO is a server call in itself.

If the non-visual logic you are partitioning contains multiple statements that result in server calls, then this would be a good candidate. However, if your non-visual logic does not contain any statements that would result in server calls, then by partitioning this you have not only created more work for yourself but actually added an additional server call that didn't exist before. So unfortunately it's not as simple as moving all non-visual logic to the server-side.

Imagine your PowerBuilder client contains the following code:

```

long ll_id

dw_1.Retrieve()
dw_1.SetSort("#1 A, #2 D")
dw_1.Sort()

declare order_detail cursor for
select id from order_detail where orderid = :arg_orderid;
open order_detail;
fetch order_detail into :ll_id;

do while sqlca.sqlcode = 0
  update order_detail set price = price*1.2
  where orderid = :arg_orderid and id = :ll_id;

  if sqlca.sqlcode < 0 then
    rollback;
    return
  end if

  fetch order_detail into :ll_id;
loop
close order_detail;
commit;

dw_2.Retrieve()
dw_2.SetFilter("price >= 100")
dw_2.Filter()
  
```

The code in bold above would be good candidate for partitioning as server-side NVOs while the rest of the code should remain at the PB client. After partitioning this logic, the new PB client code, which would invoke the server-side NVO, would be as follows:

```
n_order ln_order
long ll_rc

dw_1.Retrieve()
dw_1.SetSort("#1 A, #2 D")
dw_1.Sort()

ll_rc = myconnect.CreateInstance(ln_order, "PB_pkg_1/n_order")
if ll_rc = 0 then
    ln_order.of_UpdateOrderPrice(arg_orderid)
end if

dw_2.Retrieve()
dw_2.SetFilter("price >= 100")
dw_2.Filter()
```

With this technique we have reduced those numerous server calls of the database transaction to just one single call to the NVO, and at the same time created a re-usable component that can be shared by other modules in our PowerBuilder application or shared by other applications.

6.4 Technique #3: eliminating recursive Embedded SQL

It's actually quite common to find Embedded SQL in a loop, especially Select and Insert statements. As explained previously, server calls that are recursive in nature are quite dangerous, potentially generating tremendous number of server calls. If your application requires loops or recursive functions, it would be best to replace any code resulting in server calls with code that does not.

For this technique, we will assume we have Select and Insert SQL statements in a loop. The general idea is to first create a DataWindow/DataStore using the SQL. Then replace the SQL statements contained in the loop with PowerScript modifying the DataWindow/DataStore, which does not result in server calls. If the SQL statement contained in the loop is an Insert statement, we would want to replace that with PowerScript that would insert data into the DataWindow/DataStore. Once all the data has been inserted, then in one shot we would update the DataWindow/DataStore to the database (outside the loop), resulting in only one server call. If the SQL statement contained in the loop is a Select statement, we would retrieve data into a DataWindow/DataStore before executing the loop, and then write PowerScript in the loop to select the desired data from the DataWindow/DataStore.

The following is a code example that increases the price of a specific order by 20%, where Embedded SQL is used to update the change row-by-row (hence the loop), and then save those changes to the database:

```
long ll_id

declare order_detail cursor for
select id from order_detail where orderid = :arg_orderid;
open order_detail;
fetch order_detail into :ll_id;

do while sqlca.sqlcode = 0
  update order_detail set price = price*1.2
  where orderid = :arg_orderid and id = :ll_id;

  if sqlca.sqlcode < 0 then
    rollback;
    return
  end if

  fetch order_detail into :ll_id;
loop
close order_detail;
commit;
```

Now we will replace the Embedded SQL with a DataWindow. Specifically, we will cache the data in a DataWindow and update the database with a single DataWindow Update, resulting in just once server call:

```
long ll_rows, i

ll_rows = dw_1.retrieve(arg_orderid)
for i = 1 to ll_rows
  dw_1.SetItem(i, "price", dw_1.GetItemDecimal(i, "price")*1.2)
next

if dw_1.update() = 1 then
commit;
else
rollback;
end if
```

With this technique we have just eliminated server calls from inside the loop, reduced the number of server calls to just one, and created a data caching mechanism at the client-side that can be used to feed data to other controls of the PowerBuilder client.

6.5 Technique #4: grouping multiple server calls with Appeon Labels

Part of this section, mainly including introduction to Appeon Labels and the two examples, are quoted from an article titled [Appeon Performance Tuning](#) published in [ISUG Journal - October 2011 Edition](#) written by [Yakov Werde](#).

Appeon deployment is a multiphase process. In the first phase PowerScript code is analyzed and converted into two categories of code (1) HTML and JavaScript that interact with the Browser and (2) JavaScript that interacts with the Appeon ActiveX component. During this phase the deployment tool converts embedded SQL and DataWindow database centric code (retrieves and updates) into RPCs (remote procedure calls) that interact with Appeon components in the Application Server. The important fact to understand is that both the Appeon deployment and runtime engines distinguish between the different categories of code. Additionally, Appeon engineers, recognizing the importance of performance tuning RPC code, provided language constructs that allow an application developer to demarcate

and group RPC code in ways that will allow the runtime engine to performance enhance browser/server communication. These performance enhancing language extensions are called Appeon Labels.¹

Appeon for PowerBuilder provides seven "Appeon Label" functions, which can be found in the `appeon_nvo_db_update` object in `appeon_workaround.pbl` (Although the PBL is named `workarounds`, it also contains many useful utility classes and methods). When you examine the code of these functions, you will find the code either looks like the same nested PowerScript you have already written (such as `of_update()`), or has no implementation (such as `of_startqueue()`). The fact is: Appeon Label functions serve as markers (hence, the name Label) to the deployment tool; and during the deployment process, Appeon generates efficient JavaScript ActiveX component call code that implements bandwidth saving functionality in the Web tier client. Therefore, Appeon Labels do not execute any code or modify how your PowerBuilder application works in a Client/Server environment. Rather, when used on the Web it will notify Appeon's runtime Web libraries to handle certain database operations differently than PowerBuilder with the aim of reducing the number of server calls.

Below are descriptions of the seven "Label" functions about how they handle the database operation. For details about the syntax and return values of these functions, please refer to the "Appeon Labels" section in the *Appeon Workarounds Guide*.

Table 6.1: Appeon Label functions

Label	Function	Description
Commit/ Rollback Label	<code>of_autocommitrollback</code>	Notifies the Appeon Web application to automatically commit or roll back the first database operation statement after the label.
Commit Label	<code>of_autocommit</code>	Notifies the Appeon Web application to automatically commit the first database operation.
Rollback Label	<code>of_rollback</code>	Notifies the Appeon Web application to automatically roll back the first database operation statement if the operation fails.
Queue Labels (Consists of Start Queue Label and Commit Queue Label)	<code>of_startqueue</code> <code>of_commitqueue</code>	These two labels must be used in pairs. They notify the Appeon Web application not to commit database operations after the Start Queue Label until the Commit Queue Label is called (and unless an Appeon Immediate Call Label is called).
Immediate Call	<code>of_imdcall</code>	Notifies the Appeon Web application to immediately commit a database operation.
Update Label	<code>of_update</code>	It is used to reduce the number of interactions with the server caused by "interrelated updates". "Interrelated updates" usually occurs when the

¹Quoted from an article titled [Appeon Performance Tuning](#) published in [ISUG Journal - October 2011 Edition](#) written by [Yakov Werde](#).

Label	Function	Description
		update result of one DataWindow determines whether another DataWindow should be updated.

Appeon Commit/Rollback Label

The Appeon Commit/Rollback Label (of_autocommitrollback) notifies Appeon to automatically commit or roll back operations to the database after updating or inserting.

For example:

```
gmv_appeonDbLabel.of_AutoCommitRollback()
update tab_a .....
if sqlca.sqlcode=0 then
..... //code independent of database operations
commit;
.....
else
.....
rollback;
.....
endif
```

Appeon Commit Label

The Appeon Commit Label (of_autocommit) notifies Appeon to commit operations to database after updating and inserting.

For example:

```
gmv_appeonDbLabel.of_AutoCommit()
update tab_a .....
```

Appeon Queue Labels

There are two Appeon Queue Labels, the Start Queue Label (of_startqueue) and the Commit Queue Label (of_commitqueue). These two labels must be used in pairs. They notify Appeon not to commit database operations after the Start Queue Label until the Commit Queue Label is called (and unless an Appeon Immediate Call Label is called).

For example:

```
gmv_appeonDbLabel.of_StartQueue()
dw_1.retrieve(arg1,arg2)
dw_2.retrieve(arg3,arg2)
.....
dw_3.retrieve(arg4)
gmv_appeonDbLabel.of_CommitQueue()
```

Appeon Immediate Call Label

The Appeon Immediate Call Label (of_imdcall) is used between the Appeon Start Queue Label and Appeon Commit Queue Label, when the return value of an operation that is called after the Appeon Start Queue Label determines the subsequent business logic, for example, the return value is used in a CASE or IF...THEN expression.

For example:

```

gnv_appeonDbLabel.of_StartQueue()
dw_1.retrieve()
gnv_appeonDbLabel.of_ImdCall()
select ... into :var_1,:var_2 .....

if var_1>0 then
  para = "ok"
else
  para = "false"
end if
dw_2.retrieve(para)
gnv_appeonDbLabel.of_CommitQueue()

```

Apeon Update Label

The Apeon Update Label (of_update) is used to reduce the number of interactions with the server caused by "interrelated updates". "Interrelated updates" usually occurs when the update result of one DataWindow determines whether another DataWindow should be updated.

The following example shows how Apeon uses the Update Label to reduce client-server interactions:

Example of interrelated updates:

```

if dw_1.Update()=1 then
  if dw_2.Update()=1 then
    commit;
    MessageBox("Success","Update success!")
  else
    rollback;
    MessageBox("Failure","Update all failure!")
  end if
else
  rollback;
  MessageBox("Failure","Update dw_1 failure!")
End if

```

Use the Apeon Update Label to rewrite the example:

```

l_rtn = gnv_appeonDb.of_Update(dw_1,dw_2)
if l_rtn=1 then
  MessageBox("Success","Update success!")
elseif l_rtn= -102 then
  MessageBox("Failure","Update all failure!")
Else
  MessageBox("Failure","Update dw_1 failure!")
End if

```

Script defined in the Update Label associated function, of_Update(dw_1,dw_2):

```

if dw_1.Update()=1 then
  if dw_2.Update()=1 then
    commit;
    return 1
  else
    rollback;
    return -102
  end if
else
  rollback;
  return -101
end if

```

The more database operations utilize Apeon Labels, the faster the performance will be. For PowerBuilder applications deployed to the Web with Apeon for PowerBuilder, in many cases you will achieve acceptable runtime performance simply by utilizing this technique. The reason is that there are a number of features built into Apeon's infrastructure framework that automatically boost the performance of PowerBuilder applications over the Web. The performance boosting features are discussed in [Automatic performance boosting](#).

Two Examples¹

Now, let's see two situations where Apeon Labels reduce network traffic.

The first example illustrates performance enhancements when chaining DataWindow updates. Oftentimes, data contained in multiple data controls (datawindow, datastore or childdatawindow) must be grouped into a logical unit of work (LUW).

The following figure shows the pseudocode update algorithm. This code necessitates three browser to server round trips, one for each data control.

Figure 6.2: Nested Update Algorithm

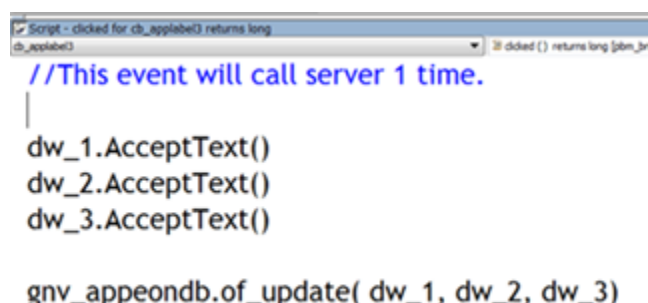
```

|
IF dw_1.update( true, false) then
  IF ds_1.update( true, false) then
    IF dwc_1.update( ) then
      commit;
    ELSE
      rollback; //dwc failed
    ELSE
      rollback; //ds failed
  ELSE
    rollback; //dw failed
END IF

```

(Apeon groups all changed data into a single transmission). As you can see from the following figure, refactoring the code to use the Apeon Label of_update() method, reduces three round trips one. In the event of a failed update the method returns a result code indicating which update failed.

Figure 6.3: Call Apeon of_update method()



```

Script: clicked for cb_applabel() returns long
cb_applabel()
  clicked() returns long [dbm_jn]
  //This event will call server 1 time.
  |
  dw_1.AcceptText()
  dw_2.AcceptText()
  dw_3.AcceptText()

  gnv_appeondb.of_update( dw_1, dw_2, dw_3)

```

Sometimes a script has multiple embedded SQL statements grouped into a single LUW. Each SQL statement causes a browser to server round trip. The following figure illustrates one such (simplified) scenario.

Figure 6.4: Five Round Trips

```

Script - clicked for cb_original2 returns long
cb_original2
//This event will call server 5 times.

Long ll_count1, ll_count2, ll_count_all
Long ll_dept_id1, ll_dept_id2

Select Count(1) Into :ll_count_all From department;
Select Top 1 dept_id Into :ll_dept_id1 From department Where dept_name = 'Sales' ;
Select Top 1 dept_id Into :ll_dept_id2 From department Where dept_name = 'Marketing' ;

Select Count(1) Into :ll_count1 From employee Where dept_id = :ll_dept_id1;
Select Count(1) Into :ll_count2 From employee Where dept_id = :ll_dept_id2;

MessageBox('ll_count1', ll_count1)
MessageBox('ll_count2', ll_count2)
MessageBox('ll_count_all', ll_count_all)

```

In this case you can use the Apeon Labels of `_startqueue()` and `_endqueue()` to demarcate logical statement groupings thereby reducing the number of server round trips. The code shown in the following figure reduces the number of server round trips by over 50% by dividing the SQL into two logical groups; the first group of statements acquires values necessary for statements in the second group.

Figure 6.5: Reduced to 2 Round Trips

```

Script - clicked for cb_applabel2 returns long
cb_applabel2
//This event will call server 2 times
Long ll_count1, ll_count2, ll_count_all
Long ll_dept_id1, ll_dept_id2

//Get the dept_id in the first group
gnv_appeondb.of_startqueue( )
    Select Count(1) Into :ll_count_all From department;
    Select Top 1 dept_id Into :ll_dept_id1 From department Where dept_name = 'Sales' ;
    Select Top 1 dept_id Into :ll_dept_id2 From department Where dept_name = 'Marketing' ;
gnv_appeondb.of_commitqueue( )

//get the employee data in the next group
gnv_appeondb.of_startqueue( )
    Select Count(1) Into :ll_count1 From employee Where dept_id = :ll_dept_id1;
    Select Count(1) Into :ll_count2 From employee Where dept_id = :ll_dept_id2;
gnv_appeondb.of_commitqueue( )

```

7 Tuning: Heavy Client

7.1 Overview

If you find your Appeon Web application performs poorly even when run in a local environment, then chances are the JavaScript interpreter of the Web browser is slowing you down. Generally, a newer or more high-power computer will clear up many situations. But if it is not an option to utilize a late model computer or if the performance issue still persists, then you would want to consider optimizing your PowerBuilder code to make it more efficient when running in the Web browser. This section provides several different techniques for dealing with several specific types of inefficient PowerBuilder coding practices.

7.2 Technique #1: thin-out #heavy# Windows

Redesign the navigation strategy to present a lighter-weight Client user interface. Specifically, you would want to focus on reduce the number of DataWindows and DropDownDataWindows in a particular window or tab page. In many situations, the DataWindows in a Window can be spread out across multiple Windows or tabs, thereby reducing the "weight" of the Window. It may be possible to rework your DropDownDataWindows as DropDownListBoxes. By thinning out the UI, it will not only make the Window run faster but your users will not be overwhelmed by so much data.

7.3 Technique #2: thin-out #heavy# UI logic

This section is broken down into several subsections, utilizing the same technique to deal with various types of "heavy" UI logic.

7.3.1 Manipulating the UI in loops

Excessive and unnecessary loops have a negative impact on performance. Some PowerBuilder code will trigger your Appeon Web application to redraw visual objects, such as DataWindows, controls, etc. If such functions are put into a loop, it will redraw the visual objects numerous times and therefore negatively affecting performance.

Appeon recommends the following:

- Do not put functions that operate on DataWindow rows into a loop.
- Avoid placing functions that result in the repaint of visual control(s) into a loop; otherwise, the visual control(s) will be repainted many times while the loop is executed.
- Use the Find function for DataWindow search instead of using the loop statement.

The following is an example:

```

Long ll_row
String ls_expression
String ls_Name
ls_Name = "Mike"
For ll_row = 1 To dw_1.RowCount()
  ls_expression =
    dw_1.GetItemString(ll_row,"name")
  If ls_expression = ls_Name Then

    Exit
  End If
Next

```



```

Long ll_row
Long ll_rowcount
String ls_expression
String ls_Name
ls_Name = "Mike"
ll_rowcount = dw_1.RowCount()
For ll_row = 1 To ll_rowcount
  ls_expression = +
    dw_1.GetItemString(ll_row,"name")
  If ls_expression = ls_Name Then
    ...
  End If
Next

```



```

Long ll_row
Long ll_rowcount
String ls_expression
String ls_Name
ls_Name = "Mike"
ll_rowcount = dw_1.RowCount()
ls_expression = "name = " + ls_Name + ""
ll_row = dw_1.Find(ls_expression,1,ll_rowcount)
...

```

7.3.2 Triggering events repeatedly

Frequent triggering of events such as Timer, MouseMove, and SelectionChanging slows down performance. For example, once a Timer event is triggered, it occurs repeatedly at a specified interval that can be set to even milliseconds (1/1000 of a second). Minimize the usage of events with high repetition such as Timer, MouseMove, SelectionChanging, GetFocus, LoseFocus, Activate, and Deactivate.

7.3.3 Performing single repetitive tasks

Use batch operations instead of performing a single operation many times. For example, the execution of the following "batch" code is two to three times faster than the original code.

```
For I = 1 To 100
  dw_1.SetItem(11_i,+
              "name",+
              dw_2.GetItemString(11_i,"name"))
  ...
Next
```



```
dw_1.RowsCopy(1,100,Primary!,dw_2,1,100,Primary!)
```

7.3.4 Initializing #heavy# tabs

For windows containing Tab controls, if the Tab control contains more than five tab pages or the initialization of each tab page is complex, Apeon recommends you use the `CreateOnDemand` method of Tab control to improve the runtime performance of these windows.

When `CreateOnDemand` is enabled, only the current tab page that is created will be initiated. The initialization of the hidden tab pages takes place only when they are selected. Therefore the window will operate more efficiently.

Please keep in mind that as you make this change you may also need to modify other code of the Tab control. For example, if the current tab page uses data from another page, you need to:

1. Move the script that is used for obtaining data, to the `SelectionChanged` event.
2. Add a condition to validate whether the tab page carrying the data has been initiated. If initiated, the current tab page will successfully obtain the data; if not initiated, the user must select the tab page for initialization purposes, and the current tab page will successfully obtain the data.

7.3.5 Using `ShareData` or `RowsCopy/RowsMove` for data synchronization

The following PowerBuilder functions can synchronize data between DataWindows: `ShareData`, `RowsCopy/RowsMove`, `Object.Data`, and `SetItem`. `ShareData` is the fastest and it is recommended to use it whenever you need to synchronize data between DataWindows. `SetItem` is the slowest and should be avoided as much as possible. If `ShareData` cannot be or should not be used for some reason, then consider using `RowsCopy/RowsMove` followed by `Object.Data`.

7.3.6 Using computed fields

Computed columns involve a lot of recalculation in many situations; for example, when a column is deleted, added, or renamed. This recalculation is a process-intensive task, which negatively impacts performance and can be worked around. Therefore, Apeon recommends the following:

- Avoid using computed columns in detail bands. Instead, add expressions in the SQL statements for getting specific data.
- Avoid embedding a computed column in an existing computed column.

- If a computed column is "Text: Sum or Expression", it is recommended that you divide the column into two columns: an edit style column with the "Text", and a computed column with "Sum or Expression".

7.3.7 Using DataWindow expressions

Generally speaking, DataWindow expressions will slow-down the initial display or subsequent refresh of DataWindows. As such, Apeon recommend you reduce the usage of DataWindow expressions if possible, especially in the following situations:

- Avoid using DataWindow expressions for computing and setting column properties.
- Avoid setting sort and filter criteria directly for a DataWindow object. Instead, write the sort and filter criteria in the SQL statement of the DataWindow object. As noted previously, it is faster to use SQL statements than DataWindow functionality.

7.3.8 Using complex filters

Filters are considered "complex" if the filter criteria contain one or more expressions that call to one or more functions. It is recommended that you not use complex filtering on a DataWindow, especially on a DataWindow that has large amounts of data.

7.3.9 Using RowsFocusChanging/RowsFocusChanged events

The DataWindow RowsFocusChanging and RowsFocusChanged events can be triggered under many situations, especially when a DataWindow retrieves data. Since data is usually automatically retrieved into DataWindows when a Window is opened, if a lot of code is written into the RowsFocusChanging and RowsFocusChanged events, it will significantly prolong the time it takes to open the Window and display the DataWindow. Apeon recommends that you do not write code into RowsFocusChanging and RowsFocusChanged events unless it is necessary.

7.4 Technique #3: offload #heavy# non-visual logic

Instead of trying to write "heavy" logic more efficiently or avoiding use of "heavy" logic, the simplest way is just to offload all that "heavy" logic to the application server, which is designed to handle the most daunting tasks. The only catch is that only non-visual logic can be run at the application server.

The following types of non-visual logic can be encapsulated in PowerBuilder NVOs and deployed to the application server to eliminate "heavy" logic from the Web browser:

- Complex non-visual events and functions, especially non-visual events and functions that contain dynamic SQL, Cursor statements, Stored Procedure calls, and other SQL statements.
- Validation of updated data.
- A series of data computations or a complex data computation.

8 Tuning: Large Data Transmissions

This section introduces two common-used techniques to reduce the size of data transmission:

8.1 Overview

Suppose you have worked hard to make an application Web-ready using Apeon, and, using your test data, it seemed to perform acceptably. Then, when your users provide "live" test data in realistic volumes, you discover that the application takes a long time to load, and worse, a long time to respond to your user's input. What to do?

Well first you should confirm that your issue is not being caused by excessive server calls (see [Tuning: Excessive Server Calls](#)). The reason is that majority of the time, PowerBuilder applications are coded such that as additional rows of data are retrieved logic is executed to validate, manipulate, or otherwise handle the data, which can result in server calls. As such, the more rows of data are retrieved the more server calls are made.

Once you are certain the slow-down is not caused by excessive server calls then you can consider reducing the size of data transmission. So what can do practically? Well at a high-level there are several techniques you can employ:

- The first and most popular is staging the data retrieval into manageable increments. For example, you can expose a Next button, and have the application respond to this button click by getting the next logical segment of the result set just like typical Websites or Web applications. [Technique #1: retrieving data incrementally](#) gives you instructions on how to achieve this.
- Another technique is to create multiple smaller "specific" views rather than one larger "general" view. Consider adding SQL WHERE clauses based on more search criteria, thus retrieving only the amount of data that is absolutely necessary for a particular view of interest.
- If you have a choice between reducing the number of rows retrieved, and reducing the number of columns, note that a small reduction in columns (described below in [Technique #2: minimizing excessive number of columns](#)) can improve performance to an even greater extent than a reduction in rows. This is because most of the time, loops, whether in the application code or in the virtual machine, visit columns first and then rows.

Anything you do to reduce the size of the result set in one way or another can only improve performance and possibly improve usability of your application as well.

8.2 Technique #1: retrieving data incrementally

8.2.1 For Oracle database server

Oracle includes a pseudo-column called ROWNUM which allows you to generate a list of sequential numbers based on ordinal row. If your application uses Oracle database, apply your Oracle skills and ROWNUM to limit the number of returned rows. For example, this query selects the TOP 10 rows from a table:

```
SELECT *
FROM (SELECT * FROM my_table ORDER BY col_name_1)
WHERE ROWNUM BETWEEN 1 AND 10;
```

You can impose a NEXT button to the DataWindow. In the Clicked event of the NEXT button, the query changes with ROWNUM increments by 10. Therefore, when the NEXT button is clicked, the DataWindow displays next 10 rows.

8.2.2 For all other database servers

If your application uses a non-Oracle database (for example, Microsoft SQL server) you can use the following SQL syntax to limit the number of returned rows to the DataWindow:

```
SELECT TOP 10 *
FROM my_table
WHERE Table.primary_key > = bottom
ORDER BY Table.primary_key;
```

"bottom" is a variable that contains the row number of the first row you want to retrieve, where rows are ordered by the primary key for the table. Before retrieving the first page of data, "bottom" should be set to a value smaller than any primary key value in the table.

Based on this SQL statement, you can implement Next and Previous buttons for the DataWindow. Their Clicked events increment or decrement the bottom variable so that its value matches the primary key value in the first row you want to retrieve then execute the above SQL statement.

8.3 Technique #2: minimizing excessive number of columns

As the number of rows in the result set increased, the number of columns will cause greater degradation on performance, especially for nested loops in your application which process rows in the outer loop, and columns in the inner loop. Sometimes the excessive number of columns is intentional and other times it is unintentional.

A sign of unintentionally excessive columns would be the SQL syntax `Select * From`: consider modifying this syntax to `Select fieldList From`, where `fieldList` is the comma-separated list of all, and only, those fields your application will actually need. The performance of the SQL syntax using asterisk will be automatically degraded any time your database administrator modifies the database design by adding columns.

A sign of intentionally excessive columns is simply a long list of columns in your SQL `Select` statement. Consider analyzing your actual needs to make certain all columns are necessary. It may be possible to request certain columns (needed only in exceptional circumstances) in a separate SQL operation. Please keep in mind if the `Visible` property of a column is set to zero (the control is not visible), even though the Column cannot be seen, it is still impacting performance.

9 Conclusion

PowerBuilder applications that perform well today in your local network may not perform well in a distributed architecture tomorrow. Likewise, typical PowerBuilder development practices may not be suitable for a distributed architecture. The several techniques outlined in this guide are intended to steer you in general directions. It is recommended to extrapolate from these examples and apply to your particular situation. Please keep in mind that excessive server calls is the single biggest culprit of performance issues over the Internet, which is a relatively high latency connection.

Purchasing expensive network connectivity and faster hardware can make up for suboptimal code. Sometimes the cost of doing this is less than the cost of optimizing the code. If you do take this route, keep in mind that a low-latency network connection is generally the key rather than a high-bandwidth connection. Reason being, for most PowerBuilder applications and deployments, it is the network latency that kills the runtime performance not bandwidth limitations.

Index

Symbols

"The session does not exist" error, [60](#)

A

additional functions, [36](#)

Additional steps for Update operation, [55](#), [59](#)

advanced thread settings

 execution Timeout, [16](#)

 maxconnection, [15](#)

 maxWorkerThreads and maxIoThreads, [15](#)

 minFreeThreads and

 minLocalRequestFreeThreads, [15](#)

 minWorkerThreads, [15](#)

 recommended thread settings, [16](#)

AEM performance settings

 Custom Libraries download settings, [11](#)

 DataWindow data caching, [11](#)

 Log file settings, [12](#)

 Multi-thread download settings, [11](#)

 Timeout settings, [10](#)

Analyzing log files

 Analyzing log files, [67](#)

Appendix, [59](#)

appendix

 Modifying the scripts of EJB/JavaBean, [60](#)

 Modifying the scripts of NVO, [59](#)

 Troubleshooting, [60](#)

Appeon Developer performance settings, [9](#)

Appeon Enterprise Manager performance settings, [10](#)

Appeon performance

 automatic performance boosting, [4](#)

 expected performance level, [4](#)

 impact of heavy client-side logic, [6](#)

 impact of large data transmission, [7](#)

 impact of the Internet and slow networks, [5](#)

Appeon performance analyzer

 additional functions, [36](#)

 calls analysis, [24](#)

 download analysis, [28](#)

 enable, [19](#)

 get to know, [22](#)

 remove, [22](#)

 start, [20](#)

 system configuration, [23](#)

 view detail, [29](#)

 automatic performance boosting, [4](#)

C

cache size, [13](#)

calls analysis, [24](#)

configure data sources

 cache size, [13](#)

 JDBC driver, [12](#)

Configuring AEM, [47](#)

Custom Libraries download settings, [11](#)

D

Data preparation, [47](#)

DataWindow data caching, [11](#)

download analysis, [28](#)

E

eliminate recursive Embedded SQL, [77](#)

enable Appeon performance analyzer, [19](#)

error message appears in script playback, [62](#)

Error message in Appeon Log, [63](#)

Errors appear when playing back scripts with LoadRunner 8.0, [61](#)

excessive server calls

 eliminate recursive Embedded SQL, [77](#)

 group multiple server calls with Appeon Labels, [78](#)

 partition non-visual logic via NVOs, [75](#)

 partition transactions via stored procedures, [73](#)

execution Timeout, [16](#)

expected performance level, [4](#)

F

Failed to parameterize scripts, [63](#)

Field values do not change after parameterization and playback, [66](#)

Filter function, [36](#)

Find function, [42](#)

G

General Limitations on Performance Testing, [46](#)

get to know Appeon performance analyzer, [22](#)

group multiple server calls with Appeon Labels, [78](#)

H

Heavy Client

- offload heavy non-visual logic, [87](#)
- thin-out heavy UI logic, [84](#)
- thin-out heavy windows, [84](#)

I

identify performance bottlenecks

- Identifying Performance Bottlenecks of PB application, [71](#)

identifying performance bottlenecks

- Analyzing performance bottlenecks of PB application, [71](#)

- Appeon performance analyzer, [19](#)

- Deadlock analysis, [70](#)

- identifying Performance Bottlenecks of DB Server, [70](#)

- Identifying Performance Bottlenecks of Web Server and Application Server, [70](#)

- Testing Appeon Web applications with LoadRunner, [46](#)

If you need help, [3](#)

IIS server performance settings

- advanced thread settings, [14](#)
- recommendations for avoiding common errors, [13](#)

impact of heavy client-side logic, [6](#)impact of large data transmission, [7](#)impact of the Internet and slow networks, [5](#)initialize heavy tabs, [86](#)Internet Explorer performance settings, [12](#)**J**JDBC driver, [12](#)JVM startup option, [12](#)**L**

large data transmissions

- minimize excessive number of columns, [89](#)
- retrieve data incrementally, [88](#)

Log file settings, [12](#)**M**manipulate the UI in loops, [84](#)maxconnection, [15](#)Maximum Rollback Retries, [11](#)maxIoThreads, [15](#)maxWorkerThreads, [15](#)minFreeThreads, [15](#)minimize excessive number of columns, [89](#)minLocalRequestFreeThreads, [15](#)minWorkerThreads, [15](#)Modifying scripts, [54](#)

modifying scripts

- additional steps, [55](#)

- parameterization, [55](#)

Modifying the scripts of EJB/JavaB, [60](#)Modifying the scripts of NVO, [59](#)Multi-thread download settings, [11](#)**N**New Root Item function, [44](#)**O**offload heavy non-visual logic, [87](#)Oracle database server, [88](#)other database servers, [89](#)Out of memory error and application server shut down, [65](#)**P**Parameterization of SQL statements, [55](#)partition non-visual logic via NVOs, [75](#)partition transactions via stored procedures, [73](#)perform single repetitive tasks, [85](#)

performance settings

- AEM, [10](#)

- Appeon Developer, [9](#)

- Internet Explorer, [12](#)

- Web and application server, [12](#)

Playing back Script to test the correctness of scripts, [58](#)preparing test cases, [48](#)**R**recommendations for avoiding common errors on IIS, [13](#)recommended thread settings, [16](#)Recording scripts, [48](#)Related documents, [1](#)remove Appeon performance analyzer, [22](#)

retrieve data incrementally

- Oracle database server, [88](#)

- other database servers, [89](#)

Rollback Completion time, [11](#)Running Scenarios, [59](#)

Runtime errors causing scenario failure, [66](#)

S

Save As XML function, [43](#)

Session timeout, [10](#)

Session Timeout Detection Interval, [10](#)

Setting Scenarios, [58](#)

setting scenarios

 additional steps for update operation, [59](#)

 start Apeon performance analyzer, [20](#)

 Sybase EAServer performance settings

 configure data sources, [12](#)

 JVM startup option, [12](#)

 system configuration, [23](#)

T

testing Apeon Web applications with

 LoadRunner

 Appendix, [59](#)

 general limitations, [46](#)

 loadrunner, [46](#)

 testing, [47](#)

 testing steps, [47](#)

 testing environment, [47](#)

 testing steps, [47](#)

 modifying, [54](#)

 playing back, [58](#)

 preparing test cases, [48](#)

 recording, [48](#)

 Running scenarios, [59](#)

 Setting scenarios, [58](#)

 Testing steps

 Configuring AEM, [47](#)

 data preparation, [47](#)

The value of sessionID is null, [61](#)

thin-out heavy UI logic, [84](#)

 initialize heavy tabs, [86](#)

 manipulate the UI in loops, [84](#)

 trigger events repeatedly, [85](#)

 use complex filters, [87](#)

 use computed fields, [86](#)

 use DataWindow expressions, [87](#)

 use RowsFocusChanging/

 RowsFocusChanged events, [87](#)

 use ShareData or RowsCopy/RowsMove

 for data synchronization, [86](#)

thin-out heavy windows, [84](#)

thin-out #heavy# UI logic

 perform single repetitive tasks, [85](#)

Timeout settings

 Maximum Rollback Retries, [11](#)

 Rollback Completion time, [11](#)

 Session timeout, [10](#)

 Session Timeout Detection Interval, [10](#)

 Transaction timeout, [10](#)

 Transaction Timeout Detection Interval,
 [10](#)

Transaction timeout, [10](#)

Transaction Timeout Detection Interval, [10](#)

Transactions failed, [66](#)

trigger events repeatedly, [85](#)

Troubleshooting, [60](#)

troubleshooting

 error message, [62](#)

 error message in apeon log, [63](#)

 Errors appear, [61](#)

 Failed to parameterize scripts, [63](#)

 Field values, [66](#)

 Out of memory error, [65](#)

 Runtime errors, [66](#)

 The session, [60](#)

 The value, [61](#)

 Transactions failed, [66](#)

 Unable to connect, [67](#)

Tuning: DB server

 Database, [72](#)

U

Unable to connect to remote servers, [67](#)

use complex filters, [87](#)

use computed fields, [86](#)

use DataWindow expressions, [87](#)

use RowsFocusChanging/

RowsFocusChanged events, [87](#)

use ShareData or RowsCopy/RowsMove for
data synchronization, [86](#)

V

view detail, [29](#)

W

Web and application server performance
settings

 Microsoft IIS server, [13](#)

 SAP Sybase EAServer, [12](#)