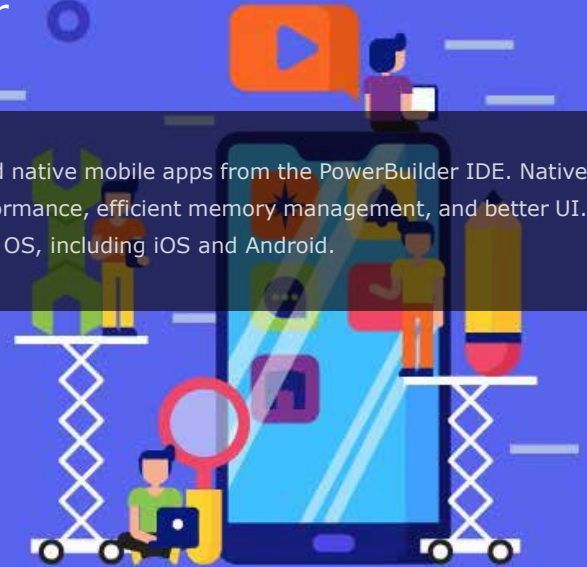


PowerServer Mobile

Build Cross-OS Native Mobile Apps 10x faster
with PowerServer Mobile

PowerServer Mobile enables PowerBuilder developers to rapidly and easily build native mobile apps from the PowerBuilder IDE. Native mobile apps, unlike HTML5, offer powerful native mobile functionality, fast performance, efficient memory management, and better UI. Appeon Mobile Apps, although native, can be run on virtually all mobile device OS, including iOS and Android.



Develop Mobile Apps Rapidly & Easily



Develop 10x faster

Thanks to the high productivity of PowerBuilder and the familiar development environment (PowerBuilder IDE), developers can perform virtually all the coding and integration tasks required to develop rich data-driven apps.



Debug in PowerBuilder

Feature Analyzer and Code Insight make it easy to make your project compliant for the mobile device, taking the guess work out of development.



Compile natively

Choose to generate either an Xcode project that can be compiled to a standard IPA or download the Appeon WorkSpace from the Apple Store and let Appeon do all the work.

Go Cross-Device With A Single Code Set



Cross-OS Native Mobile

Deploy a SINGLE code set as native mobile apps to leading mobile OS (iOS, Android), even if using the mobile device SDK (camera, GPS, printer, etc.).



Codeless UI Resizing

Adapt applications, quickly and easily, to display properly on any mobile device without having to modify any code or perform any calculations, and preview changes in the Appeon Emulator to ensure your apps render properly on target devices.



Cross-platform Server

Deploy natively to either leading Java or .NET application servers as well as leading public clouds powered by Amazon, Microsoft, VMWare or Rackspace.

PowerServer Mobile

Feel the Power of Native Technology



Powerful Desktop-like Apps

Develop powerful data-driven business apps with virtually the same level of functionality and performance as traditional desktop applications, plus take advantage of mobile-specific functionality, such as GPS, camera, microphone, etc.



Multitasking User Interface

Take advantage of the highly productive MDI multitasking user interface on mobile devices, which is uniquely offered in a familiar yet touch-optimized manner.



Always Up-to-Date

Keep apps automatically up-to-date (including on iOS) without any additional client software or user intervention.

Safeguard Your Corporate Data



SSL Encryption

Secure all mobile communication with SSL over industry-standard HTTPS with peer & host verification.



Binary Encryption

Appeon add an additional layer of encryption to all mobile communication utilizing binary encryption.



User Authentication

Allow only authorized users to install and run your mobile apps by verifying login credentials, IP address, and/or hardware ID.

Pricing

Development licenses (IIS version) is already included in PowerBuilder Universal Edition with no extra cost. Production server licenses depend on the # of users, and can be as low as [USD 25/user](#). [Find more](#).

The license fees are one-time purchase and allow you to use the product for as long as you like and deploy an unlimited # of mobile apps. OEM partnership is also available for qualified software vendors. Please check with Appeon Inc. or authorized Appeon partners to receive a price quotation.

System Requirements

Developer PC

Appeon PowerBuilder 2017 / Microsoft Windows 10, 8, 7

Mobile Device

Apple iOS 10 or above
Google Android 6.x or above

Mobile Server

Microsoft IIS 7.5-10, JBoss EAP 6.0.1 or 6.4, WildFly 10, IBM WebSphere 6.x - 8.x, Oracle WebLogic 8i - 12c

Database Server

SQL Anywhere 8-17, ASE 12.x/15.x, IQ 12.x/15, SAP HANA 1.00.36, Microsoft SQL Server 2000-2017, Oracle 8i-12c, Informix 7-11, IBM DB2 8.x-9.x/10, Teradata 13.x, MySQL 5.5/5.6, PostgreSQL 9.2

Contact Us

Please contact us below to learn more about PowerServer Mobile, including requesting a live demo or evaluation.

[✉ sales@appeon.com](mailto:sales@appeon.com) [☎ +1-877-327-7366](tel:+1-877-327-7366)